

# Consumer Expectations Survey

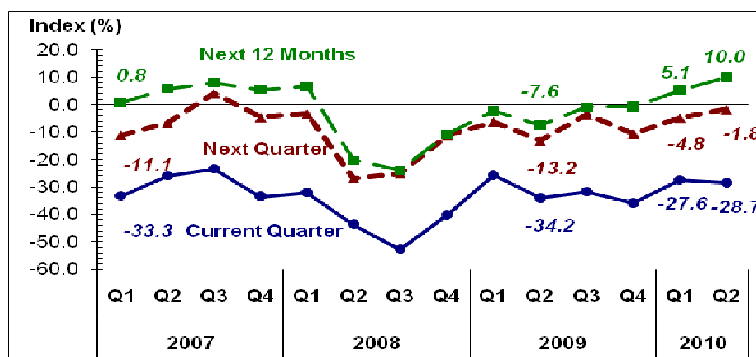
Second Quarter 2010

9/17/2010 9:39 AM

## Consumer Confidence Slightly Weakens in Q2 2010, but Outlook for the Next Twelve Months Hits Record High Optimism

### Nationwide Consumer Outlook

Overall Consumer Outlook Index  
Philippines



*Consumer confidence declines slightly in Q2 2010 but hits record high in the next twelve months*

Consumer sentiment weakened slightly in Q2 2010, with the confidence index (CI) declining to -28.7 percent from -27.6 percent in Q1 2010 amid concerns over the impact of the El Niño dry spell on agricultural output and near-term uncertainties in the job market as new graduates enter the labor force.<sup>1</sup> By contrast, with favorable expectations over the fresh mandate to be exercised by newly-elected national and local government officials, consumer confidence over the course of the next 12 months reversed gear and turned more optimistic. In particular, the next 3 months' CI reached its second highest level since the nationwide survey started in 2007, although the pessimists continued to outnumber the optimists but only by a small margin. The positive outlook for the next quarter mirrored the rebound in consumer confidence in other countries such as the United States, China, Mexico, Hungary, Slovenia, and Czech Republic. Further evidence of more buoyant consumer confidence was reflected in the all-time-high positive index for the next 12 months which jumped to 10.0 percent from 5.1 percent a quarter ago and -7.6 percent a year ago.

*Optimism on family income improves in Q2 2010, while the outlook on the economic condition of the country is*

Consumer perceptions were captured across three dimensions: economic condition of the country, family financial situation and family income. Consumers' less favorable outlook on the economic condition of the country and their family financial

<sup>1</sup> The overall consumer confidence index is determined by the average of 3 measures, namely, the outlook on macroeconomic conditions, family financial situation and family income. The 1.1 percent decline in the CI for Q2 2010 is statistically significant at the 1% level. Please refer to the Technical Notes for the definition of terms.



*highest for the next quarter.* situation were partly offset by the improved outlook on family income during the quarter.

For the next quarter, consumers were more confident that the country's economic condition would be better. The next quarter's CI on economic condition reached its peak, although remaining in the negative territory. Consumers were also bullish on prospects for improved family income.

With expectations of an orderly outcome of the elections acting as a positive stimulus, consumer sentiment across three dimensions—economic condition of the country, family financial situation and family income—improved for the year ahead.

*The high- and middle-income groups look forward to more favorable economic conditions in the next 12 months ...*

In the current quarter, consumer sentiment across income groups showed mixed trends.<sup>2</sup> The perception of the low-income group (comprising the bulk of the respondents) improved in two dimensions—on the economic condition of the country and their own family income—but their outlook on the family financial situation weakened slightly. The sentiment of the middle-income group on their own family income picked up but their views on the economic condition of the country and their family financial situation declined. Meanwhile, the outlook of the high-income group was less optimistic across the three dimensions.

Looking ahead to the next 12 months, the outlook on the economic condition of the country registered the most notable improvement, reaching its highest level since the nationwide survey started in 2007. The high-income group had the most upbeat outlook on the country's economic condition, followed by the middle-income and the low-income groups. They were also the most optimistic about their family financial situation, but the number of respondents who were optimistic declined relative to a quarter ago.

*... while the low-income group expects higher family income.*

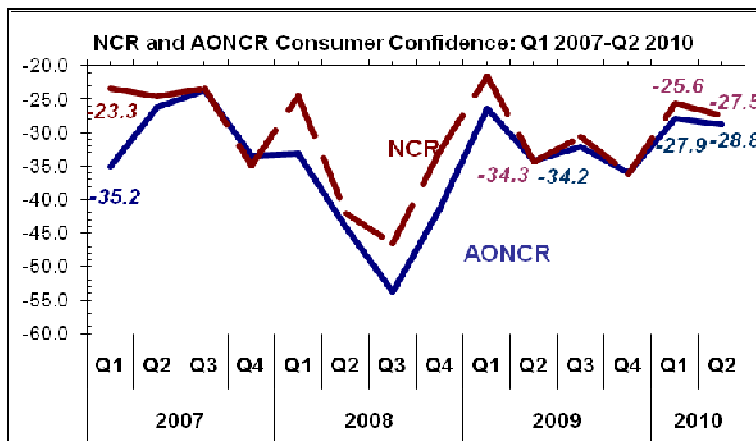
Meanwhile, the low-income group registered the biggest improvement in outlook with respect to their family income for the next twelve months, followed by the middle-income group. Both groups' optimism on their family income was at their highest level in 9 quarters since Q2 2008, while the sentiment of the high-income group declined but remained buoyant.

<sup>2</sup> Low-income refers to households with monthly family income of less than ₱10,000; middle-income group, ₱10,000 – ₱29,999; and high-income group, ₱30,000 and over.



**NCR and AONCR Consumer Outlook**

Current Quarter Consumer Outlook Index for NCR and AONCR



*Consumer sentiment in NCR and in AONCR both follow the national trend.*

Consumer sentiment in the National Capital Region (NCR) and Areas Outside NCR (AONCR) both followed the national trend, registering a modest decline in Q2 2010 but improving in the next quarter and in the year ahead.

NCR and AONCR respondents' outlook on the economic condition of the country and their own family financial situation declined, while the outlook on their family income improved in Q2 2010.

For the next 12 months, however, the outlook of both NCR and AONCR respondents reached all-time highs, with the optimists outnumbering the pessimists. Respondents from NCR remained more optimistic than their counterparts from AONCR across all three indicators. The improvement in consumer sentiment was most pronounced on the economic condition of the country. The outlook of AONCR respondents turned positive after being in the negative territory since the start of the nationwide survey. This favorable outlook could be viewed from a perspective that respondents nationwide have high expectations on the new government.

**Expenditures for Next Quarter**

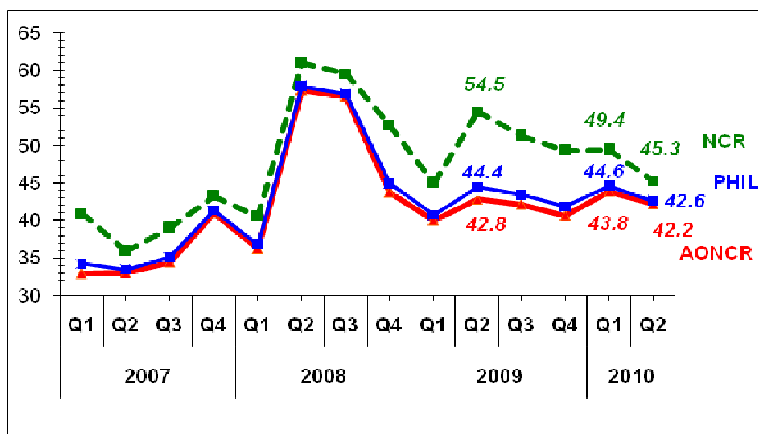
*Spending outlook on basic goods and services declines slightly in Q3 2010.*

Fewer households expected that their expenditures on basic goods and services would go up in Q3 2010. Except for water consumption and transportation, the spending outlook decreased for all other basic commodities. This view is consistent with expectations of lower inflation rates for the year ahead.



By geographical location, the expenditure outlook of both AONCR and NCR consumers for the next quarter followed the pattern recorded at the national level. NCR respondents indicated higher spending only for water consumption and education while those in AONCR anticipated increased expenditures for transportation and fuel, in addition to water consumption.

Confidence Index: Expenditures Next Quarter



**Buying Conditions**

*Buying conditions remain broadly steady in Q2 2010*

Despite the modest weakening of consumer outlook, the percentage of respondents that considered the current quarter as a favorable time to buy big-ticket items remained steady compared to the previous quarter. The slight improvement in the buying conditions for consumer durables and housing was offset by the slight decline in buying conditions for motor vehicles.

By area, consumers' views on buying conditions were favorable in the NCR primarily for motor vehicles and real property. Respondents believe that owning real property is a good investment. The flexible installment terms for housing loans enable consumers to own real property without affecting significantly their liquidity position. Meanwhile, the outlook on buying conditions of AONCR respondents was almost unchanged from the previous quarter's survey results.

**Buying Intentions**

*Buying intentions for the next 12 months likewise continue to be broadly steady*

The broadly steady outlook of consumers on buying conditions for Q2 2010 was carried over to the next 12 months. This outlook on buying intentions was observed for both NCR and AONCR respondents.



### Selected Economic Indicators

*Consumer confidence on employment, inflation and interest rates over the next 12 months turns more favorable.*

Consumers have a more favorable view on the trend of selected economic indicators. With expectations of possible employment abroad and more domestic job opportunities, the employment situation is anticipated to improve in the next 12 months as the number of respondents who expected an increase in the unemployment rate declined relative to the previous quarter's survey results. Due in part to declining oil prices, respondents expected inflation to edge lower to 9.1 percent (from 10.4 percent) over the course of the next 12 months. With inflation expected to be contained at lower levels, a greater number of consumers anticipated that interest rates would likewise be on a downtrend. Fewer respondents anticipated that the peso would continue to depreciate against the US dollar in the year ahead in line with expectations of continued strong inflows of foreign exchange, particularly from overseas Filipinos' remittances, business process outsourcing services receipts and merchandise export revenues.

### Expenditures of Overseas Filipino Workers (OFWs)

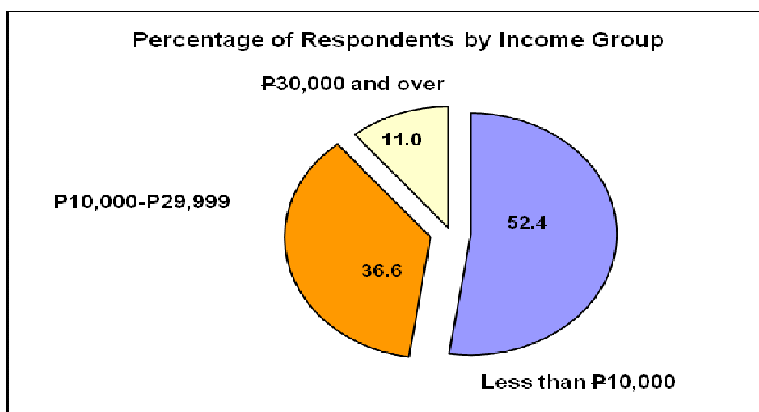
*OFW households utilize their remittances primarily for food, education, medical expenses, debt payments and savings in Q2 2010.*

Most OFW households used remittances in Q2 2010 for food (96.3 percent of the households). Over sixty percent of the households (64.2 percent) used their remittances for education expenses, 51.4 percent for medical expenses and 43.3 percent for debt payments. The percentage of OFW households that utilized remittances to purchase consumer durables and motor vehicles was broadly steady at 27.0 and 7.7 percent, respectively (from 30.0 percent and 6.6 percent in Q1 2010). Those that apportioned part of their remittances to amortization or full payment for houses purchased decreased to 11.9 percent (from 15.0 percent and in the previous quarter).

Compared to the previous quarter's survey results, the percentage of households that allocated portions of their remittances to savings went down to 38.0 percent (from 50.4 percent in Q1 2010), while those households using remittances for investment increased to 7.2 percent (from 5.8 percent in Q1 2010). The utilization pattern of remittances was broadly similar for both NCR and AONCR households.



## About the Survey



*Survey respondents total 5,706 households nationwide.*

The Bangko Sentral ng Pilipinas started the Consumer Expectations Survey (CES) in Q3 2004 but the coverage was limited to the National Capital Region. The CES became a nationwide survey beginning Q1 2007. For Q2 2010, the CES was conducted during the period 5-16 April 2010 with a total sample size of 5,706 households, of which 3,104 (54.4 percent) were from the NCR and 2,602 (45.6 percent) from the AONCR. The CES samples were drawn from the National Statistics Office's (NSO) Master Sample List of Households, which is considered a representative sample of households nationwide. The said master sample was generated using a stratified multi-stage probability sampling scheme.

The nationwide total survey response rate for Q2 2010 was 96.0 percent (from 96.5 percent in the last quarter's survey). By area, the response rate was 95.0 percent in NCR and 97.3 percent in AONCR. Majority of the respondents (52.4 percent) were from the low-income group (less than ₱10,000 monthly family income), 36.6 percent were from the middle-income group (₱10,000 - ₱29,999 monthly family income), and 11.0 percent belonged to the high-income group (monthly family income of ₱30,000 and over).

#### TECHNICAL NOTES

The overall consumer confidence index is computed as the average of the three indices, namely:

1. Economic Condition refers to the perception of the respondent regarding the general economic condition of the country.
2. Family Financial Situation refers to the level of household income in cash as well as in kind, savings, outstanding debts, investments and assets.
3. Family Income includes primary income and receipts from other sources received by all family members as participants in any economic activity or as recipients of transfers, pensions, grants, and the like.

The confidence index or diffusion index is computed as the percentage share of respondents that answered in the affirmative less the percentage share of respondents that answered negative in a given indicator. A positive CI indicates that respondents with a favorable view outnumber those with an unfavorable view, except for unemployment, change in prices and interest rate for borrowing money, where a positive CI indicates the opposite.



## Consumer Expectations Survey

Philippines  
Q1 2007 - Q2 2010

	2007				2008				2009				2010	
	Q1	Q2	Q3	Q4	Q1	Q2	Q3	Q4	Q1	Q2	Q3	Q4	Q1	Q2
<b>1. Overall Consumer Outlook: Composite Index</b>														
<b>Current Quarter</b>	-33.3	-26.0	-23.6	-33.6	-32.1	-43.8	-52.8	-40.3	-25.7	-34.2	-31.9	-36.0	-27.6	-28.7
NCR	-23.3	-24.5	-23.4	-35.0	-24.5	-42.1	-46.6	-32.8	-21.5	-34.3	-30.6	-36.2	-25.6	-27.5
AONCR	-35.2	-26.3	-23.7	-33.4	-33.2	-44.1	-53.8	-41.5	-26.4	-34.2	-32.1	-36.0	-27.9	-28.8
<b>Next 3 Months</b>	-11.1	-6.7	4.1	-4.6	-3.4	-26.9	-25.1	-11.2	-6.2	-13.2	-3.7	-10.5	-4.8	-1.8
NCR	-7.8	-1.9	2.6	-1.2	3.6	-20.7	-23.6	-11.8	-9.1	-12.5	-4.0	-13.9	-2.5	-0.5
AONCR	-11.7	-7.5	4.3	-5.1	-4.4	-27.9	-25.4	-11.1	-5.7	-13.3	-3.7	-10.0	-5.1	-2.0
<b>Next 12 Months</b>	0.8	5.8	7.9	5.5	6.6	-20.3	-23.9	-10.7	-2.3	-7.6	-0.9	-0.8	5.1	10.0
NCR	12.3	14.0	13.4	9.0	16.3	-16.8	-18.7	-9.4	-2.2	-7.8	5.1	6.1	17.1	22.9
AONCR	-1.3	4.3	7.0	5.0	5.1	-20.8	-24.7	-10.9	-2.3	-7.6	-1.9	-2.0	3.2	7.9
<b>2. Consumer outlook indices on the current economic and family condition: Current Quarter</b>														
<b>Philippines</b>														
Economic Condition	-47.5	-40.4	-36.1	-55.9	-53.6	-73.0	-81.2	-69.9	-44.6	-56.8	-54.4	-63.6	-50.7	-53.6
Less than ₱10,000	-49.9	-43.4	-36.8	-58.6	-56.6	-71.9	-81.2	-70.4	-45.5	-55.8	-56.4	-64.1	-53.4	-52.2
₱10,000-₱29,999	-41.9	-33.8	-35.9	-52.4	-48.4	-75.3	-81.2	-70.1	-43.0	-58.3	-50.8	-64.1	-46.8	-56.1
₱30,000 and over	-27.1	-23.5	-23.3	-36.2	-47.6	-73.9	-82.4	-65.2	-42.9	-59.3	-49.5	-56.0	-40.0	-54.6
Family Financial Situation	-32.8	-25.6	-25.2	-28.9	-27.9	-40.6	-51.5	-35.0	-22.8	-31.6	-28.6	-29.5	-21.2	-23.2
Less than ₱10,000	-38.6	-31.7	-33.0	-39.8	-36.2	-49.6	-65.4	-53.5	-43.6	-42.0	-41.1	-40.2	-32.2	-34.6
₱10,000-₱29,999	-16.6	-12.5	-10.1	-11.2	-14.0	-27.9	-37.2	-20.1	-4.8	-16.0	-9.2	-15.9	-5.1	-9.2
₱30,000 and over	-1.5	8.3	10.2	7.5	-2.8	-1.9	-16.9	2.2	7.2	3.7	14.8	11.9	21.8	12.1
Family Income	-19.7	-12.1	-9.6	-16.0	-14.7	-17.8	-25.8	-15.8	-9.8	-14.2	-12.7	-15.0	-10.8	-9.2
Less than ₱10,000	-26.4	-19.0	-15.4	-27.1	-23.3	-26.0	-34.6	-26.8	-19.3	-22.8	-23.0	-25.2	-20.0	-19.2
₱10,000-₱29,999	-1.2	2.9	1.1	1.7	0.0	-5.5	-12.8	0.8	6.7	-1.1	2.5	-1.5	2.8	5.6
₱30,000 and over	13.9	24.2	22.7	25.7	10.1	13.8	7.3	16.4	11.0	14.3	26.6	22.3	25.5	12.0
<b>NCR</b>														
Economic Condition	-41.7	-39.7	-37.7	-57.6	-40.8	-75.8	-78.8	-64.0	-47.0	-64.3	-55.9	-67.6	-53.3	-59.0
Less than ₱10,000	-48.9	-45.2	-41.2	-66.4	-44.6	-79.3	-81.2	-65.8	-48.9	-63.1	-58.3	-67.6	-57.6	-63.0
₱10,000-₱29,999	-35.9	-36.2	-36.3	-51.7	-38.5	-74.0	-77.1	-61.8	-45.7	-67.3	-54.3	-69.4	-49.5	-56.0
₱30,000 and over	-19.7	-23.7	-21.0	-29.9	-28.3	-67.7	-74.1	-63.7	-44.9	-59.7	-51.3	-61.4	-51.6	-57.0
Family Financial Situation	-20.5	-25.2	-23.0	-32.5	-23.5	-38.0	-43.2	-26.8	-13.8	-26.0	-25.9	-27.3	-16.2	-17.1
Less than ₱10,000	-29.6	-33.4	-31.9	-48.4	-35.3	-51.7	-59.8	-43.9	-33.0	-39.5	-40.1	-45.1	-38.6	-40.3
₱10,000-₱29,999	-10.4	-20.7	-18.4	-19.9	-15.4	-31.9	-32.9	-17.4	-3.9	-17.8	-17.2	-19.0	-8.3	-8.0
₱30,000 and over	-5.3	3.1	12.8	7.4	9.7	-2.4	-8.1	11.7	16.7	2.4	5.4	9.8	28.1	21.8
Family Income	-7.7	-8.7	-9.6	-14.7	-9.2	-12.5	-17.9	-7.5	-3.9	-12.5	-9.9	-13.8	-7.4	-6.3
Less than ₱10,000	-17.5	-20.2	-16.4	-30.0	-17.9	-24.1	-30.7	-18.8	-15.0	-25.1	-20.6	-27.6	-23.9	-24.5
₱10,000-₱29,999	1.3	-0.3	-5.4	-2.2	-3.2	-6.9	-8.6	0.8	3.7	-3.9	-3.8	-6.6	-0.8	1.9
₱30,000 and over	16.8	19.7	14.2	21.2	15.1	16.7	5.0	10.8	6.2	10.3	15.8	12.7	22.5	20.4



## Consumer Expectations Survey

Philippines  
Q1 2007 - Q2 2010

	2007				2008				2009				2010	
	Q1	Q2	Q3	Q4	Q1	Q2	Q3	Q4	Q1	Q2	Q3	Q4	Q1	Q2
<b>2. Consumer outlook indices on the current economic and family condition: Current Quarter (Continued)</b>														
<b>AONCR</b>														
Economic Condition	-48.6	-40.5	-35.8	-55.6	-55.6	-72.6	-81.6	-70.9	-44.2	-55.5	-54.1	-62.9	-50.3	-52.7
Less than P10,000	-50.0	-43.2	-36.3	-57.7	-57.9	-71.1	-81.1	-70.9	-45.2	-55.0	-56.2	-63.7	-53.0	-51.1
P10,000-P29,999	-44.1	-33.0	-35.8	-52.5	-50.6	-75.6	-82.1	-72.0	-42.3	-56.1	-50.0	-62.8	-46.0	-56.1
P30,000 and over	-33.0	-23.3	-24.3	-39.4	-53.4	-76.3	-86.3	-65.7	-42.2	-59.2	-48.8	-54.1	-35.1	-53.7
Family Financial Situation	-35.0	-25.7	-25.6	-28.4	-28.6	-41.0	-52.8	-36.4	-24.3	-32.5	-29.0	-29.9	-22.1	-24.2
Less than P10,000	-39.8	-31.5	-33.1	-38.7	-36.3	-49.4	-61.1	-46.0	-34.0	-42.3	-41.2	-39.7	-31.6	-34.0
P10,000-P29,999	-18.9	-9.8	-7.9	-9.4	-13.6	-27.0	-38.2	-20.7	-5.1	-15.5	-7.3	-15.2	-4.1	-9.5
P30,000 and over	1.6	11.7	9.1	7.6	-6.6	-1.7	-20.9	-0.9	4.0	4.1	18.1	12.6	19.1	8.7
Family Income	-21.9	-12.7	-9.6	-16.2	-15.5	-18.7	-27.0	-17.1	-10.7	-14.5	-13.2	-15.2	-11.4	-9.6
Less than P10,000	-27.5	-18.9	-15.3	-26.7	-23.9	-26.3	-35.0	-27.7	-19.8	-22.6	-23.3	-25.0	-19.7	-18.7
P10,000-P29,999	-2.1	3.9	2.8	2.5	0.7	-5.2	-13.7	0.7	7.6	-0.5	4.0	-0.3	3.8	6.6
P30,000 and over	11.6	27.2	26.4	28.0	8.6	12.7	8.4	18.3	12.6	15.5	30.4	25.8	26.8	9.0
<b>3. Consumer outlook indices on economic and family condition: Next Quarter</b>														
<b>Philippines</b>														
Economic Condition	-25.2	-16.9	-7.4	-24.8	-19.4	-46.4	-47.2	-27.0	-21.2	-25.1	-18.0	-28.1	-12.4	-6.3
Less than P10,000	-26.3	-20.1	-8.7	-27.4	-20.5	-46.5	-47.1	-26.9	-20.4	-26.2	-19.7	-28.2	-14.4	-8.8
P10,000-P29,999	-22.8	-9.3	-5.0	-21.2	-18.8	-46.7	-48.1	-26.9	-22.5	-22.1	-15.2	-29.6	-9.3	-2.8
P30,000 and over	-16.5	-6.7	-0.4	-7.9	-6.5	-44.1	-44.2	-28.8	-22.5	-26.7	-12.2	-20.6	-4.2	-1.5
Family Financial Situation	-9.0	-7.9	4.4	-0.9	-3.2	-28.6	-24.5	-8.2	-3.5	-12.0	-0.9	-6.5	-4.3	-4.6
Less than P10,000	-14.2	-12.0	0.7	-9.0	-6.8	-34.2	-30.7	-13.9	-8.4	-17.7	-7.2	-11.1	-10.2	-11.7
P10,000-P29,999	5.8	1.6	12.0	11.7	3.0	-21.3	-15.0	-0.4	5.0	-3.6	7.2	-0.8	5.6	4.3
P30,000 and over	14.4	7.3	16.6	32.8	5.3	-1.6	-3.2	11.4	7.0	6.7	28.7	11.7	13.2	16.5
Family Income	1.0	4.8	15.3	11.9	12.6	-5.6	-3.7	1.7	6.1	-2.5	7.7	3.0	2.4	5.6
Less than P10,000	-3.3	1.0	11.8	5.6	7.5	-9.2	-7.4	-1.3	3.7	-6.2	3.9	0.1	-0.5	0.4
P10,000-P29,999	13.5	13.5	24.4	22.3	22.2	0.2	1.9	6.8	11.4	4.2	13.7	5.6	6.4	13.3
P30,000 and over	19.7	20.7	13.6	32.8	17.5	5.7	10.0	7.7	5.3	4.4	21.2	17.8	15.0	16.2
<b>NCR</b>														
Economic Condition	-24.6	-13.4	-8.4	-15.8	-9.3	-39.9	-43.9	-27.5	-26.9	-26.3	-17.8	-32.1	-12.3	-8.1
Less than P10,000	-29.0	-17.3	-11.9	-23.0	-9.4	-41.5	-49.4	-31.5	-26.1	-28.0	-20.9	-32.9	-17.1	-11.8
P10,000-P29,999	-22.0	-10.2	-5.6	-10.7	-9.6	-39.3	-38.8	-25.0	-29.3	-25.4	-14.6	-32.0	-11.1	-6.8
P30,000 and over	-6.9	-6.5	1.2	5.2	-5.7	-34.8	-39.5	-19.7	-20.3	-22.0	-15.8	-30.1	-1.5	-1.1
Family Financial Situation	-3.4	-3.0	1.4	-1.4	3.1	-21.4	-23.2	-11.5	-4.9	-10.3	-1.1	-9.5	-0.7	-0.9
Less than P10,000	-10.3	-6.5	-3.4	-11.0	-0.9	-29.7	-36.6	-20.8	-13.4	-17.7	-10.1	-19.2	-12.5	-10.7
P10,000-P29,999	2.7	-0.5	2.9	5.7	5.8	-17.6	-12.4	-5.2	-0.5	-5.0	4.8	-2.8	3.7	3.7
P30,000 and over	14.9	5.0	26.2	25.3	15.2	0.1	-2.2	5.9	8.9	2.6	17.9	3.8	22.0	13.1
Family Income	4.7	10.8	14.8	13.7	16.8	-1.0	-3.7	3.4	4.6	-0.9	7.0	-0.1	5.6	7.5
Less than P10,000	-0.7	7.4	13.3	5.0	13.3	-4.5	-12.1	0.1	1.0	-4.6	2.6	-4.1	1.2	2.6
P10,000-P29,999	10.1	13.9	15.0	21.6	19.2	0.5	3.2	5.1	6.5	1.8	10.3	0.9	7.1	10.0
P30,000 and over	16.0	15.7	24.5	29.8	25.9	8.5	9.1	11.7	10.4	5.1	14.9	11.0	14.4	13.7





# Consumer Expectations Survey

## Philippines

Q1 2007 - Q2 2010

	2007				2008				2009				2010	
	Q1	Q2	Q3	Q4	Q1	Q2	Q3	Q4	Q1	Q2	Q3	Q4	Q1	Q2
<b>3. Consumer outlook indices on economic and family condition: Next Quarter (Continued)</b>														
<b>AONCR</b>														
Economic Condition	-25.4	-17.5	-7.2	-26.2	-21.0	-47.5	-47.8	-27.0	-20.2	-24.9	-18.0	-27.4	-12.4	-6.1
Less than ₱10,000	-25.9	-20.4	-8.3	-28.0	-21.8	-47.1	-46.8	-26.4	-19.8	-26.0	-19.6	-27.7	-14.2	-8.4
₱10,000-₱29,999	-23.2	-9.0	-4.8	-23.4	-20.9	-48.5	-50.2	-27.3	-20.7	-21.3	-15.3	-29.0	-8.8	-1.7
₱30,000 and over	-24.2	-6.8	-1.1	-14.5	-6.8	-47.8	-46.4	-31.8	-23.2	-28.1	-10.9	-17.1	-5.4	-1.6
Family Financial Situation	-10.0	-8.8	4.9	-0.8	-4.2	-29.7	-24.7	-7.7	-3.3	-12.3	-0.9	-6.0	-4.9	-5.2
Less than ₱10,000	-14.7	-12.6	1.2	-8.8	-7.4	-34.7	-30.0	-13.1	-7.9	-17.7	-6.8	-10.2	-10.0	-11.8
₱10,000-₱29,999	6.9	2.3	14.3	13.0	2.4	-22.2	-15.5	0.8	6.5	-3.2	7.7	-0.3	6.2	4.4
₱30,000 and over	14.1	8.8	12.4	36.6	2.2	-2.3	-3.6	13.3	6.4	8.1	32.6	14.5	9.4	17.7
Family Income	0.3	3.7	15.4	11.6	11.9	-6.3	-3.7	1.4	6.3	-2.8	7.8	3.5	1.9	5.3
Less than ₱10,000	-3.7	0.3	11.6	5.7	6.9	-9.7	-6.8	-1.5	4.0	-6.3	4.0	0.6	-0.7	0.2
₱10,000-₱29,999	14.7	13.3	26.8	22.5	22.9	0.2	1.7	7.2	12.8	4.8	14.4	6.8	6.2	14.2
₱30,000 and over	22.8	24.0	8.9	34.3	15.0	4.6	10.4	6.4	3.5	4.2	23.5	20.3	15.2	17.1
<b>4. Consumer outlook indices on economic and family condition: Next 12 Months</b>														
<b>Philippines</b>														
Economic Condition	-15.2	-7.1	-5.8	-15.9	-13.2	-44.3	-48.9	-31.0	-20.2	-27.6	-15.5	-16.1	1.1	7.4
Less than ₱10,000	-18.1	-10.8	-8.6	-20.5	-15.2	-44.7	-50.4	-31.3	-21.0	-29.8	-18.7	-18.4	-2.8	1.0
₱10,000-₱29,999	-8.0	1.4	0.8	-9.4	-10.7	-44.8	-46.8	-29.9	-18.6	-22.5	-10.7	-15.4	8.4	16.4
₱30,000 and over	5.7	7.3	-2.0	10.7	-0.7	-37.6	-41.5	-32.3	-19.2	-27.1	-4.2	3.4	9.3	22.5
Family Financial Situation	4.0	5.8	8.9	9.5	9.5	-19.6	-23.1	-7.6	1.8	-3.9	1.2	0.7	4.4	7.5
Less than ₱10,000	-2.0	1.4	4.3	2.9	4.1	-25.4	-30.1	-14.5	-3.9	-10.9	-6.6	-6.6	-2.7	0.0
₱10,000-₱29,999	20.6	15.0	18.7	19.8	18.5	-12.6	-12.5	2.8	11.3	8.1	13.2	10.3	14.8	17.6
₱30,000 and over	37.3	31.9	22.3	37.2	26.3	10.4	2.5	12.9	16.3	14.1	28.3	26.2	32.3	26.4
Family Income	13.6	18.7	20.7	23.0	23.6	3.2	0.3	6.6	11.5	8.5	11.6	12.9	9.9	15.2
Less than ₱10,000	7.9	14.0	16.8	16.2	18.5	-2.7	-5.0	1.4	7.3	3.6	7.1	7.8	4.3	10.0
₱10,000-₱29,999	29.0	29.7	28.7	34.4	32.5	13.8	7.1	14.4	19.7	18.4	19.0	20.9	18.8	22.9
₱30,000 and over	44.8	36.9	33.8	42.5	35.9	16.0	25.0	21.9	16.4	15.1	25.8	26.4	28.8	25.8
<b>NCR</b>														
Economic Condition	-0.4	2.1	5.1	-7.9	-0.1	-41.3	-42.3	-32.0	-23.7	-29.7	-7.0	-6.2	9.8	18.2
Less than ₱10,000	-3.8	-2.1	2.8	-13.1	-3.5	-44.1	-48.2	-33.5	-25.4	-34.0	-8.6	-9.7	6.6	13.4
₱10,000-₱29,999	3.7	6.3	8.2	-4.3	3.0	-39.7	-36.6	-30.5	-22.8	-27.6	-5.9	-5.0	9.6	19.1
₱30,000 and over	3.2	5.2	4.6	8.3	5.2	-36.0	-36.1	-30.9	-20.7	-18.5	-4.0	2.9	20.3	29.6
Family Financial Situation	14.5	13.9	13.2	8.8	19.3	-16.4	-14.8	-8.7	0.8	-3.3	7.7	8.7	17.6	21.6
Less than ₱10,000	9.0	8.0	9.8	0.1	13.1	-30.2	-28.6	-17.2	-4.3	-15.9	-2.7	-0.9	2.7	8.0
₱10,000-₱29,999	19.9	16.9	15.3	15.8	25.2	-7.8	-5.2	-4.8	-0.7	7.3	14.7	14.3	24.6	27.9
₱30,000 and over	26.3	35.5	25.5	30.5	27.5	11.2	11.2	13.3	25.2	13.6	29.0	24.9	41.4	40.9
Family Income	22.9	26.0	21.9	25.9	29.7	7.4	0.9	12.4	16.2	9.5	14.5	15.9	23.8	28.9
Less than ₱10,000	17.3	19.3	20.0	16.8	22.9	-0.1	-9.3	7.0	13.1	2.2	10.9	8.4	15.0	22.0
₱10,000-₱29,999	29.5	30.8	23.2	33.9	35.4	11.7	8.0	14.3	17.4	16.0	16.1	22.0	29.1	31.7
₱30,000 and over	30.0	42.6	27.6	44.1	42.2	23.3	20.5	27.9	22.4	17.6	25.0	22.8	33.9	40.1



**Consumer Expectations Survey**  
**Philippines**  
**Q1 2007 - Q2 2010**

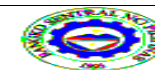
	2007				2008				2009				2010	
	Q1	Q2	Q3	Q4	Q1	Q2	Q3	Q4	Q1	Q2	Q3	Q4	Q1	Q2

**4. Consumer outlook indices on economic and family condition: Next 12 Months (Continued)**

<b>AONCR</b>														
Economic Condition	-17.9	-8.8	-7.5	-17.2	-15.2	-44.8	-49.9	-30.8	-19.6	-27.2	-16.9	-17.7	-0.3	5.6
Less than P10,000	-19.9	-11.8	-9.9	-21.5	-16.5	-44.8	-50.7	-31.0	-20.6	-29.3	-19.9	-19.4	-3.7	-0.3
P10,000-P29,999	-12.2	-0.3	-1.2	-10.4	-13.8	-46.1	-49.0	-29.8	-17.4	-21.3	-11.9	-17.9	8.0	15.8
P30,000 and over	7.8	8.7	-4.9	11.9	-2.5	-38.3	-44.0	-32.8	-18.7	-29.9	-4.3	3.5	4.5	20.1
Family Financial Situation	2.1	4.4	8.2	9.6	8.0	-20.2	-24.4	-7.4	2.0	-3.9	0.1	-0.6	2.3	5.2
Less than P10,000	-3.4	0.7	3.7	3.3	3.1	-24.8	-30.3	-14.2	-3.9	-10.3	-7.1	-7.2	-3.2	-0.8
P10,000-P29,999	20.8	14.4	19.5	20.6	17.0	-13.8	-14.0	4.5	14.7	8.3	12.9	9.3	12.1	15.0
P30,000 and over	46.1	29.6	20.9	40.6	25.9	10.0	-1.6	12.7	13.2	14.3	28.1	26.8	28.4	21.3
Family Income	11.9	17.4	20.5	22.5	22.6	2.5	0.2	5.7	10.8	8.4	11.2	12.5	7.6	13.0
Less than P10,000	6.8	13.3	16.4	16.1	18.0	-3.0	-4.5	0.8	6.7	3.8	6.7	7.7	3.3	8.8
P10,000-P29,999	28.9	29.4	30.2	34.5	31.9	14.3	6.9	14.4	20.4	19.0	19.6	20.6	15.9	20.7
P30,000 and over	56.8	33.2	36.6	41.6	33.9	13.0	27.2	19.9	14.3	14.3	26.1	27.7	26.6	20.7

**5. Confidence Index on Amount of Expenditures: Next Quarter**

<b>Philippines</b>														
Food	34.2	33.4	35.1	41.3	36.8	57.9	56.9	44.9	40.7	44.4	43.4	41.8	44.6	42.6
Clothing and Footwear	52.7	52.9	58.2	69.2	61.0	84.4	84.4	68.9	63.2	66.1	67.8	66.4	67.8	65.8
Fuel	22.1	25.4	32.5	27.7	23.0	42.3	37.3	31.3	26.0	27.4	31.9	25.5	31.2	30.4
Electricity	36.3	37.5	37.0	39.8	33.9	65.9	69.2	43.1	39.7	49.2	50.8	46.2	53.2	50.9
Water	44.1	40.8	42.4	45.1	41.5	63.3	62.2	47.5	42.6	50.3	52.9	42.1	57.2	55.7
House rent	23.3	17.4	16.1	19.2	19.4	33.2	32.8	25.3	23.1	27.6	27.4	21.9	32.6	34.4
Transportation	5.4	1.0	1.0	2.2	1.7	18.4	15.8	11.7	10.9	12.9	8.9	11.1	12.9	9.4
Communication	37.3	36.8	37.2	40.8	34.5	68.0	82.9	52.2	36.0	51.1	51.2	46.5	46.2	48.7
Education	17.6	14.9	15.1	15.7	12.3	33.3	30.2	22.1	20.7	24.5	21.9	19.8	21.5	20.4
Medical Care	35.5	47.2	36.4	44.4	44.9	60.1	45.9	41.6	40.8	45.7	38.2	34.6	41.8	41.2
Personal Care & Effects	37.3	36.4	34.8	38.9	38.0	59.2	52.5	44.7	40.6	42.7	40.8	33.6	39.6	32.9
Hotel & Restaurant	37.6	37.2	35.0	45.9	42.6	59.8	59.4	47.1	44.4	45.4	39.0	39.7	41.4	38.7
	13.4	10.2	12.2	12.7	10.0	26.4	26.0	16.4	15.8	14.6	15.0	13.2	16.5	11.4
<b>NCR</b>														
Food	41.0	35.9	39.0	43.2	40.5	61.0	59.6	52.7	45.0	54.5	51.3	49.3	49.4	45.3
Clothing and Footwear	59.8	57.2	64.8	70.6	62.7	86.2	87.5	78.1	67.6	80.4	78.7	77.2	76.5	70.7
Fuel	21.2	27.9	31.5	26.9	26.5	39.7	35.4	33.4	23.1	28.5	31.7	23.2	26.0	18.8
Electricity	44.7	47.0	44.4	43.4	55.2	75.2	77.9	61.7	58.1	68.3	64.5	64.7	66.3	64.0
Water	62.3	58.7	56.2	46.8	56.8	73.4	69.0	68.3	62.1	73.4	68.3	64.5	76.2	75.2
House rent	52.3	40.6	35.6	37.5	45.2	58.2	61.1	59.6	53.6	63.8	60.6	56.0	64.3	65.3
Transportation	14.1	3.8	4.3	6.8	6.8	25.6	21.4	18.5	18.6	21.3	18.7	16.8	15.0	14.3
Communication	33.5	27.4	38.0	47.0	40.5	71.8	83.6	59.9	35.9	59.2	53.4	49.9	52.1	41.0
Education	23.4	14.8	16.8	14.7	16.8	33.8	34.3	26.1	19.0	28.5	26.1	26.2	20.8	13.4
Medical Care	39.2	45.0	27.9	40.0	43.8	56.8	42.2	43.0	36.8	41.8	37.1	30.8	36.7	42.7
Personal Care & Effects	41.0	26.6	29.7	36.1	35.5	52.4	42.1	38.5	30.9	37.9	35.2	31.9	31.4	17.7
Hotel & Restaurant	39.8	31.8	33.5	43.9	42.1	57.5	51.8	47.8	40.2	47.3	34.3	35.9	35.3	30.8
	23.1	16.6	30.6	22.0	21.4	39.9	30.9	22.6	23.6	17.3	16.0	10.6	17.7	2.6



**Consumer Expectations Survey**  
**Philippines**  
**Q1 2007 - Q2 2010**

	2007				2008				2009				2010	
	Q1	Q2	Q3	Q4	Q1	Q2	Q3	Q4	Q1	Q2	Q3	Q4	Q1	Q2
<b>5. Confidence Index on Amount of Expenditures: Next Quarter (Continued)</b>														
<b>AONCR</b>	32.9	33.0	34.4	41.0	36.2	57.4	56.5	43.7	40.0	42.8	42.1	40.6	43.8	42.2
Food	51.4	52.2	57.1	69.0	60.7	84.1	83.9	67.3	62.5	63.8	66.0	64.6	66.4	65.0
Clothing and Footwear	22.3	25.0	32.6	27.8	22.4	42.7	37.6	31.0	26.5	27.2	31.9	25.9	32.1	32.3
Fuel	34.7	35.8	35.9	39.2	30.6	64.3	67.8	40.1	36.7	46.1	48.6	43.2	51.1	48.8
Electricity	40.7	37.5	40.2	44.9	39.1	61.7	61.1	44.2	39.4	46.5	50.4	38.4	54.2	52.5
Water	18.0	13.2	13.0	16.3	15.4	29.1	28.2	19.8	18.1	21.8	22.0	16.3	27.5	29.4
House rent	3.9	0.5	0.5	1.4	1.0	17.3	14.9	10.6	9.6	11.5	7.4	10.1	12.6	8.6
Transportation	38.0	38.4	37.1	39.8	33.6	67.3	82.8	51.0	36.0	49.8	50.9	46.0	45.3	49.9
Communication	16.6	14.9	14.9	15.8	11.6	33.2	29.5	21.5	20.9	23.8	21.2	18.7	21.6	21.6
Education	34.8	47.6	37.8	45.1	45.0	60.6	46.6	41.4	41.4	46.3	38.3	35.2	42.6	40.9
Medical Care	36.6	38.1	35.6	39.4	38.3	60.2	54.2	45.7	42.2	43.4	41.7	33.9	40.9	35.3
Personal Care & Effects	37.1	38.1	35.2	46.2	42.7	60.2	60.6	47.0	45.1	45.0	39.8	40.4	42.4	40.0
Hotel & Restaurant	11.7	9.1	9.2	11.3	8.2	24.2	25.2	15.4	14.5	14.2	14.9	13.7	16.3	12.8
<b>6. Percentage of households who consider the current quarter good time to buy</b>														
<b>Philippines</b>	16.2	19.9	21.0	23.1	20.4	14.7	11.4	15.0	17.5	15.8	18.0	15.5	17.2	17.6
Consumer Durables	12.9	18.6	19.8	24.3	18.8	13.4	11.2	14.0	16.5	14.7	16.6	15.0	17.1	17.9
Motor Vehicle	14.6	14.7	15.9	16.4	13.9	9.5	6.1	9.1	11.3	11.5	12.7	10.4	11.3	10.9
House & Lot	20.9	26.5	27.3	28.5	28.4	21.2	16.9	22.0	24.8	21.1	24.7	21.1	23.3	24.1
<b>NCR</b>	17.3	19.4	22.9	18.2	18.5	18.6	15.5	17.3	16.4	19.1	20.6	14.7	19.0	22.6
Consumer Durables	12.4	17.5	24.3	19.9	17.0	18.6	17.1	19.0	17.1	17.5	23.8	16.6	23.5	23.9
Motor Vehicle	17.5	13.3	15.2	11.5	10.9	10.4	5.1	8.0	9.5	12.2	11.1	8.7	10.1	15.0
House & Lot	22.0	27.4	29.0	23.1	27.4	26.8	24.4	24.8	22.6	27.4	27.0	18.6	23.4	28.9
<b>AONCR</b>	16.0	20.0	20.7	23.9	20.7	14.1	10.8	14.6	17.7	15.2	17.6	15.7	17.0	16.8
Consumer Durables	13.0	18.8	19.1	25.0	19.1	12.6	10.3	13.1	16.4	14.3	15.5	14.8	16.1	17.0
Motor Vehicle	14.1	14.9	16.0	17.2	14.3	9.3	6.3	9.3	11.6	11.4	12.9	10.7	11.5	10.2
House & Lot	20.7	26.3	27.0	29.4	28.6	20.3	15.7	21.5	25.2	20.0	24.4	21.5	23.3	23.3
<b>7. Percentage of households who intend to buy in the next 12 months</b>														
<b>Philippines</b>	9.3	12.1	13.6	15.3	13.0	7.9	6.0	7.0	7.5	7.5	9.5	7.4	7.3	6.8
Consumer Durables	14.2	20.5	21.7	26.4	20.3	10.6	8.3	9.5	9.7	9.8	12.7	11.0	10.8	9.7
Motor Vehicle	5.9	6.3	8.1	8.3	7.6	5.3	3.7	3.9	4.6	5.3	5.6	4.8	4.5	4.3
House & Lot	7.7	9.5	11.1	11.2	11.2	8.0	5.9	7.6	8.3	7.4	10.3	6.3	6.6	6.5
<b>NCR</b>	9.1	13.2	19.4	15.4	15.8	8.8	7.6	5.6	5.7	6.9	9.3	5.0	6.3	6.6
Consumer Durables	13.7	23.0	32.1	26.4	24.7	12.4	11.6	8.7	8.2	9.7	13.9	8.3	11.8	10.6
Motor Vehicle	6.0	6.1	10.1	8.2	7.5	4.1	3.7	2.3	2.9	3.4	4.1	1.9	2.0	3.8
House & Lot	7.8	10.5	16.0	11.5	15.2	9.7	7.6	5.6	5.9	7.6	9.8	4.9	5.0	5.5
<b>AONCR</b>	9.3	11.9	12.7	15.3	12.6	7.8	5.7	7.2	7.8	7.6	9.6	7.7	7.5	6.9
Consumer Durables	14.2	20.1	20.0	26.4	19.6	10.2	7.8	9.6	9.9	9.8	12.5	11.5	10.7	9.6
Motor Vehicle	5.9	6.4	7.7	8.4	7.6	5.4	3.7	4.1	4.9	5.6	5.8	5.3	5.0	4.4
House & Lot	7.7	9.3	10.3	11.1	10.6	7.7	5.6	8.0	8.7	7.4	10.4	6.5	6.8	6.7



**Consumer Expectations Survey**  
**Philippines**  
**Q1 2007 - Q2 2010**

	2007				2008				2009				2010	
	Q1	Q2	Q3	Q4	Q1	Q2	Q3	Q4	Q1	Q2	Q3	Q4	Q1	Q2

**8. Indices on Selected Economic Indicators: Next 12 Months**

**Philippines**

Unemployment Rate Index	69.1	60.0	57.6	61.3	64.5	73.0	76.1	71.1	72.4	73.6	65.1	64.4	55.8	52.4
Interest Rate Index for Borrowing Money	63.0	55.5	53.6	55.8	48.4	57.0	58.2	46.0	45.4	46.7	46.5	41.3	46.0	39.6
Exchange Rate Index	-11.4	1.1	19.4	3.4	20.2	0.0	-29.7	-19.8	-10.8	-21.8	-13.2	-4.5	-11.0	-2.7
Change in Prices Index	68.7	67.1	66.9	70.1	66.5	59.3	59.5	47.2	46.2	49.3	49.5	48.5	54.3	49.4
Inflation Rate	5.9	6.0	5.9	7.4	9.5	12.2	12.4	8.8	8.6	8.7	8.6	8.7	10.4	9.1

**NCR**

Unemployment Rate Index	63.9	50.4	49.7	56.2	46.9	76.5	78.4	69.5	72.1	72.8	58.7	56.7	47.8	49.8
Interest Rate Index for Borrowing Money	63.8	50.7	54.4	50.4	39.5	46.9	51.9	41.2	43.6	43.1	45.4	38.8	41.5	35.4
Exchange Rate Index	-6.9	7.8	31.2	14.5	23.2	-0.5	-28.5	-18.8	-8.2	-22.7	-4.5	-7.6	-11.7	2.4
Change in Prices Index	69.5	60.6	59.0	63.6	65.0	61.6	61.1	52.2	53.4	56.2	54.6	56.1	55.6	53.3
Inflation Rate	4.6	4.7	4.3	6.2	7.9	13.5	14.1	9.7	8.5	10.3	10.3	9.6	8.1	8.3

**AONCR**

Unemployment Rate Index	70.1	61.7	58.8	62.1	67.2	72.4	75.8	71.3	72.5	73.7	66.1	65.7	57.1	52.8
Interest Rate Index for Borrowing Money	62.9	56.4	53.5	56.7	49.8	58.7	59.2	46.8	45.7	47.3	46.6	41.7	46.7	40.3
Exchange Rate Index	-12.2	-0.1	17.6	1.6	19.7	0.1	-41.1	-27.8	-15.4	-21.6	-14.9	-4.0	-10.8	-3.7
Change in Prices Index	68.6	68.2	68.1	71.1	70.3	58.9	59.3	46.3	45.0	48.2	48.7	47.3	54.1	48.8
Inflation Rate	6.1	6.2	6.2	7.5	9.7	11.9	12.1	8.6	8.6	8.4	8.3	8.5	10.8	9.2

**9. Percentage of OFW Households by Type of Use of OFW Remittances**

**Philippines**

Food	92.1	91.8	94.1	97.3	96.2	95.7	95.6	95.8	94.7	96.2	93.4	95.2	97.0	96.3
Education	2.3	53.1	53.9	61.2	62.4	62.3	68.2	68.2	69.8	68.2	71.8	65.8	69.5	64.2
Medical expenses	0.7	24.2	24.5	29.3	38.5	51.2	44.4	57.6	55.2	62.4	63.2	62.2	56.7	51.4
Debt payments	-	22.9	30.2	34.0	31.1	39.2	36.0	48.9	48.5	51.1	50.0	49.2	48.5	43.3
Savings	7.2	15.7	19.8	17.5	14.0	31.3	30.4	35.8	40.0	38.3	39.9	44.8	50.4	38.0
Purchase of Appliances/Consumer Durables	5.2	9.0	10.3	7.5	6.5	20.3	18.0	24.6	24.7	25.9	26.5	26.0	30.0	27.0
Purchase of House*	2.7	2.5	1.5	1.1	6.1	14.3	12.4	16.1	11.2	10.8	12.1	10.5	15.0	11.9
Investment	2.3	4.5	4.1	5.9	1.8	3.0	7.4	4.7	5.9	8.3	7.6	7.1	5.8	7.2
Purchase of Car / motor vehicle	1.6	3.5	1.5	1.4	1.6	5.1	4.4	6.4	5.5	7.0	6.8	6.7	6.6	7.7
Others	0.7	2.2	2.1	0.7	0.7	6.2	8.4	6.3	4.5	6.1	6.6	6.5	4.5	5.0

**NCR**

Food and other household needs	92.5	91.1	93.4	96.9	94.6	95.9	94.4	97.3	95.5	96.9	94.1	95.9	97.5	96.7
Education	1.9	55.1	51.4	62.0	61.7	67.1	69.1	72.8	72.3	64.1	73.0	69.0	75.5	65.0
Medical expenses	0.4	20.0	21.7	30.6	38.8	45.5	43.2	58.1	58.3	57.6	65.2	60.9	60.5	45.4
Debt payments	-	25.3	34.0	34.9	30.0	30.5	30.9	47.7	45.5	44.1	47.3	43.5	50.6	39.2
Savings	4.9	15.1	16.5	14.0	10.8	32.5	30.9	38.6	44.2	38.6	44.1	52.8	62.1	43.1
Purchase of House*	2.6	1.8	1.9	1.3	8.8	19.1	16.1	19.1	12.4	13.4	18.8	11.8	19.7	13.7
Purchase of Appliances/Consumer Durables	4.1	6.7	7.1	7.9	5.8	19.1	22.5	29.5	28.9	28.3	32.4	29.9	36.0	28.8
Purchase of Car / motor vehicle	0.8	4.0	0.9	1.3	2.5	4.1	4.9	7.4	6.6	8.3	9.0	7.7	6.7	6.5
Investment	1.1	3.1	2.4	5.2	1.3	2.0	8.8	4.0	7.9	10.0	8.6	5.5	4.1	8.5
Others	0.4	0.9	1.4	0.4	1.3	6.5	6.3	6.4	2.1	4.5	5.5	5.2	1.9	2.0

\* From Q2-Q4 2008, purchase of house included rentals



**Consumer Expectations Survey**  
**Philippines**  
**Q1 2007 - Q2 2010**

	2007				2008				2009				2010	
	Q1	Q2	Q3	Q4	Q1	Q2	Q3	Q4	Q1	Q2	Q3	Q4	Q1	Q2

**9. Percentage of OFW Households by Type of Use of OFW Remittances (Continued)**

**AONCR**

Food and other household needs	91.6	92.6	94.9	97.6	98.0	95.9	97.2	93.9	94.0	95.4	92.6	94.5	96.4	95.8
Education	2.8	50.6	56.8	60.4	63.2	67.1	67.0	62.2	67.3	72.3	70.4	62.5	60.9	63.2
Medical expenses	1.1	29.5	27.8	27.8	38.2	45.5	46.0	57.0	52.2	67.4	60.9	63.6	51.4	59.0
Debt payments	-	19.9	25.6	33.0	32.4	30.5	42.8	50.4	51.4	58.2	53.0	55.3	45.5	48.5
Savings	10.7	16.5	23.9	21.2	17.6	32.5	29.8	32.2	35.9	37.9	35.2	36.4	33.6	31.4
Purchase of Appliances/Consumer Durables	6.7	11.9	14.2	7.1	7.4	19.1	12.1	18.3	20.7	23.5	20.0	21.7	21.4	24.7
Purchase of House*	2.8	3.4	1.1	0.9	2.9	19.1	7.4	12.2	10.0	8.1	4.8	9.1	8.2	9.6
Investment	3.9	6.3	6.3	6.6	2.5	2.0	5.6	5.7	4.0	6.7	6.5	8.7	8.2	5.4
Purchase of Car / motor vehicle	2.8	2.8	2.3	1.4	0.5	4.1	3.7	5.2	4.4	5.6	4.3	5.5	6.4	9.2
Others	1.1	4.0	2.8	0.9	0.0	6.5	11.2	6.1	6.8	7.7	7.8	7.9	8.2	8.8

**10. Distribution of Households with OFW**

**Philippines**

Number of Respondent Households with OFW	444	423	419	469	477	525	552	562	520	624	533	562	556	570
Percentage Over Total Sample Respondents	8.5	8.2	8.6	9.4	9.6	11.4	10.5	10.7	9.8	11.0	10.5	10.7	10.5	10.4
Number of Households that Received Remittances	425	401	388	441	444	469	500	528	493	575	486	524	534	545
Percentage Over Total Households with OFW	95.7	94.8	92.6	94.0	93.1	89.3	90.6	94.0	94.8	92.1	91.2	93.2	96.0	95.6

**NCR**

Number of Respondent Households with OFW	266	237	231	248	262	271	310	318	249	314	283	287	322	317
Percentage Over Total Sample Respondents	9.9	9.2	9.7	10.1	10.7	12.5	10.8	11.6	9.5	11.2	11.1	10.7	11.1	10.8
Number of Households that Received Remittances	253	225	212	229	240	246	285	298	242	290	256	271	314	306
Percentage Over Total Households with OFW	95.1	94.9	91.8	92.3	91.6	90.8	91.9	93.7	97.2	92.4	90.5	94.4	97.5	96.5

**AONCR**

Number of Respondent Households with OFW	178	186	188	221	215	254	242	244	271	310	250	275	234	253
Percentage Over Total Sample Respondents	6.9	7.3	7.5	8.8	8.6	10.5	10.0	9.6	10.1	10.8	10.0	10.7	9.7	10.0
Number of Households that Received Remittances	172	176	176	212	204	223	215	230	251	285	230	253	220	239
Percentage Over Total Households with OFW	96.6	94.6	93.6	95.9	94.9	87.8	88.8	94.3	92.6	91.9	92.0	92.0	94.0	94.5

\* From Q2-Q4 2008, purchase of house included rentals

A quarterly survey conducted by the  
**Department of Economic Statistics**

**Bangko Sentral ng Pilipinas**  
 Manila, Philippines  
[www.bsp.gov.ph](http://www.bsp.gov.ph)



# Consumer Expectations Survey

Philippines  
Q1 2007 - Q2 2010

	2007				2008				2009				2010	
	Q1	Q2	Q3	Q4	Q1	Q2	Q3	Q4	Q1	Q2	Q3	Q4	Q1	Q2

## 11. Percentage Distribution of Respondents by Income Group

### Philippines

Less than P10,000	66.5	62.3	61.9	59.1	58.4	58.2	57.5	57.1	55.5	58.4	58.4	56.1	55.1	52.4
P10,000 – P29,999	28.6	32.9	33.0	35.9	36.5	34.0	33.6	33.8	36.1	32.6	33.4	34.4	34.9	36.6
P30,000 – and over	4.9	4.9	5.1	5.0	5.1	7.8	8.9	9.1	8.4	9.0	8.2	9.5	10.0	11.0
<b>Total</b>	100.0	100.0	100.0	100.0	100.0	100.0	100.0	100.0	100.0	100.0	100.0	100.0	100.0	100.0

### NCR

Less than P10,000	54.5	49.6	51.4	51.3	49.4	47.4	49.4	47.6	42.0	47.9	48.9	45.4	42.7	41.2
P10,000 – P29,999	37.6	42.8	41.1	41.0	43.7	41.0	37.9	40.0	46.3	39.6	39.9	41.1	43.2	44.2
P30,000 – and over	7.9	7.6	7.6	7.6	6.9	11.6	12.8	12.4	11.7	12.5	11.3	13.5	14.1	14.6
<b>Total</b>	100.0	100.0	100.0	100.0	100.0	100.0	100.0	100.0	100.0	100.0	100.0	100.0	100.0	100.0

### AONCR

Less than P10,000	79.0	75.1	71.9	66.6	67.2	67.9	67.2	67.3	68.7	68.6	68.1	67.3	70.0	65.4
P10,000 – P29,999	19.2	22.8	25.4	31.0	29.4	27.7	28.5	27.1	26.1	25.8	26.8	27.4	24.9	27.8
P30,000 – and over	1.8	2.1	2.7	2.4	3.4	4.4	4.3	5.6	5.2	5.5	5.1	5.4	5.1	6.8
<b>Total</b>	100.0	100.0	100.0	100.0	100.0	100.0	100.0	100.0	100.0	100.0	100.0	100.0	100.0	100.0

## 12. Total Sample Households and Response Rate

### Philippines

Number of Sample Households	5453	5251	5093	5087	5084	4839	5472	5448	5487	5909	5315	5496	5496	5706
Number of Respondents	5239	5130	4876	4969	4962	4597	5271	5264	5290	5680	5054	5250	5306	5479
Response Rate	96.1	97.7	95.7	97.7	97.6	95.0	96.3	96.6	96.4	96.1	95.1	95.5	96.5	96.0

### NCR

Number of Sample Households	2879	2689	2558	2526	2522	2306	2990	2850	2724	2973	2717	2830	2999	3104
Number of Respondents	2677	2584	2381	2446	2456	2171	2858	2732	2613	2806	2544	2685	2889	2948
Response Rate	93.0	96.1	93.1	96.8	97.4	94.1	95.6	95.9	95.9	94.4	93.6	94.9	96.3	95.0

### AONCR

Number of Sample Households	2574	2562	2535	2561	2562	2533	2482	2598	2763	2936	2598	2666	2497	2602
Number of Respondents	2562	2546	2495	2523	2506	2426	2413	2532	2677	2874	2510	2565	2417	2531
Response Rate	99.5	99.4	98.4	98.5	97.8	95.8	97.2	97.5	96.9	97.9	96.6	96.2	96.8	97.3

Note:

\* From Q2-Q4 2008, purchase of house included rentals

A quarterly survey conducted by the  
Department of Economic Statistics

Bangko Sentral ng Pilipinas  
Manila, Philippines  
www.bsp.gov.ph

