

Consumer Expectations Survey¹

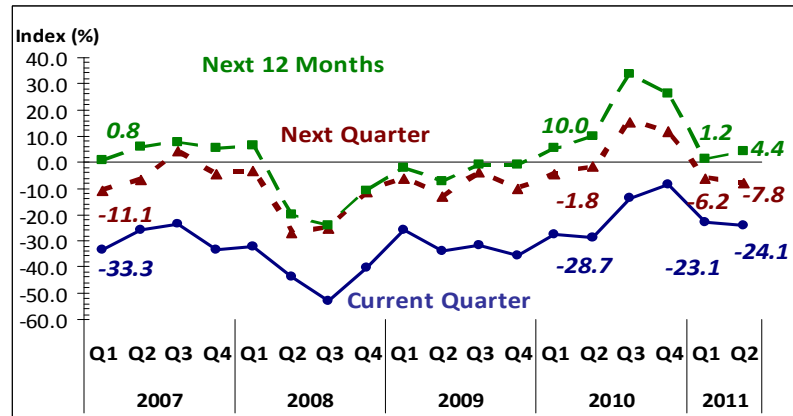
Second Quarter 2011

6/8/2011 4:32 PM

Consumer Confidence is Broadly Steady in Q2 2011; Sentiment Improves for the Year Ahead

Nationwide Consumer Outlook

Overall Consumer Outlook Index
Philippines



Consumer confidence remains steady in Q2 2011 and turns more optimistic in the year ahead.

Overall consumer confidence² was broadly steady in Q2 2011, with the confidence index (CI) decreasing slightly to -24.1 percent from -23.1 percent in Q1 2011. This means that the pessimists continued to outnumber the optimists but the margin was almost unchanged from that of a quarter ago. The current quarter outlook stemmed from the counterbalancing of the number of respondents that reported higher family incomes with those that indicated that they were negatively affected by the high cost of petroleum products and higher prices of goods and services. This outlook mirrored the steady sentiment of consumers in Germany, France, and New Zealand.

The broadly steady consumer sentiment in Q2 2011 was carried to the next quarter (CI at -7.8 percent from -6.2 percent a quarter ago). Consumers turned more bullish, however, in the year ahead (CI at 4.4 percent from 1.2 percent a quarter ago). According to them, their brighter year-ahead outlook drew support from expectations of stable prices, better employment opportunities, and increase in salaries in the

¹ The Consumer Expectations Survey (CES) is a quarterly survey of a random sample of 5,000 households in the Philippines. Results of the CES provide advance indication of consumer sentiments for the current and next quarters and the year ahead as reflected in the overall CI, as well as in selected economic indicators.

² The CI is computed as the percentage of households that answered in the affirmative less the percentage of households that answered in the negative with respect to their views on a given indicator. A positive CI indicates a favorable view, except for the inflation rate and the peso-borrowing rate, where a positive CI indicates the opposite. The overall consumer CI measures the average direction of change in three indicators - overall conditions of the economy, household finances, and household income.



domestic economy alongside the resolution of political conflict in the Middle East and North Africa Region, which could help bring down the cost of fuel. Coming from a relatively modest 4.9 percent growth of the economy in the first quarter of 2011, consumers' more optimistic outlook in the year ahead indicated expectations of acceleration in economic growth going forward.

Consumer outlook on family finances and family income improves while sentiment on economic condition weakens.

Consumers' perceptions on the three indicators—the country's economic condition, family financial situation and family income—were mixed in Q2 2011. The outlook on their family financial situation and family income slightly improved as more respondents cited that they anticipate additional incomes due to good harvest and more jobs available in Q2 2011. However, the continued increase in the prices of commodities dampened their sentiment on the economic condition of the country during the current quarter. For the next quarter, respondents' prospects for additional income and employment opportunities provided a boost to an improved outlook on the country's economic condition. Notwithstanding their expectations of better income opportunities, their sentiments on family finances and family income declined as the perceived continued increase in the prices of fuel and other commodities fed into their purchasing power. Looking ahead to the next 12 months, consumers' outlook on all three indicators turned favorable as more households expected business expansion, more jobs both in the domestic economy and abroad, and higher income due to additional working family members and forthcoming salary increases.

Consumer sentiment is mixed among income groups.

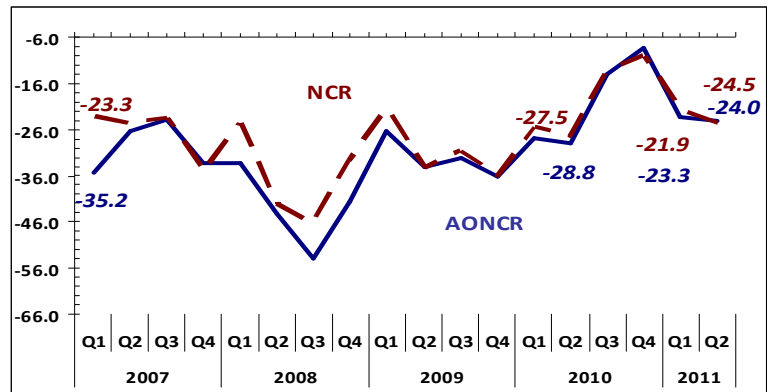
Across income groups, respondents' views about the economic condition of the country weakened during the quarter. However, their sentiments on the family financial situation and family income were mixed.³ A greater number of respondents from the low- and high-income groups had more favorable perceptions about their family financial situation and family income than otherwise, while in the middle-income group, those having more optimistic views about their families' finances declined compared to the previous quarter's survey. Over the next 12 months, the high-income group continued to be the most upbeat. Meanwhile, an improved outlook was noted among respondents from the low-income group across the three indicators.

³ Low-income group refers to households with monthly family income of less than ₱10,000; middle-income group, ₱10,000 – ₱29,999; and high-income group, ₱30,000 and over.



NCR and AONCR Consumer Outlook

Current Quarter Consumer Outlook Index for NCR and AONCR



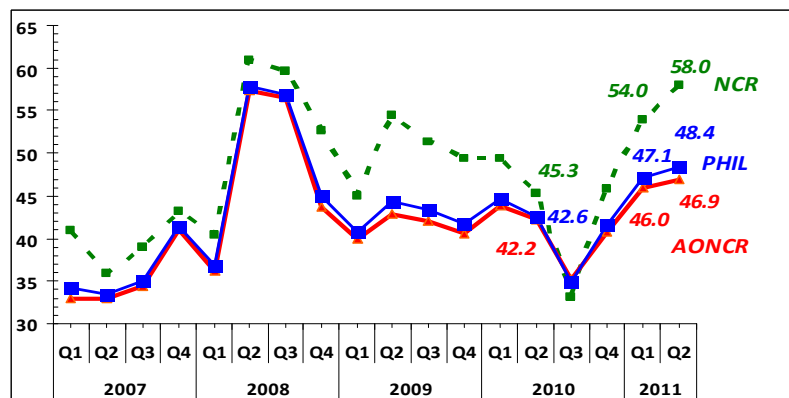
Consumer confidence was broadly steady in AONCR but weaker in NCR.

In Q2 2011, consumer sentiment was broadly steady in Areas Outside NCR (AONCR) but declined in the National Capital Region (NCR). Looking ahead to the next 12 months, a more favorable outlook was registered in AONCR as the number of respondents with a positive outlook increased compared to the previous quarter (CI increased from -0.1 percent to 4.0 percent). In the NCR, however, a bigger percentage of respondents expressed concern over the expected higher prices of basic commodities, resulting in weaker consumer confidence.

The outlook on the family financial situation and family income improved in AONCR but remained steady in NCR. However, the outlook of both NCR and AONCR respondents on the economic condition of the country edged lower in the current quarter.

Expenditures on Basic Goods and Services

Confidence Index: Expenditures Next Quarter



Household expenditures on basic goods and services are expected to rise in Q3 2011.

More consumers expected higher expenditures on basic commodities in Q3 2011 compared to the previous quarter. Higher expenditures were expected primarily on transportation, fuel, personal care and effects, and education. This indicated that inflationary pressures could come from these goods and services.

By geographical location, the expenditure outlook of NCR and AONCR consumers mirrored the pattern at the national level. However, most NCR respondents also anticipated higher expenditures on water.

Expenditures on Big-ticket items: consumer durables, motor vehicles, and house and lot

Buying conditions are more favorable in the current quarter.

Despite the continued increase in prices of commodities, more respondents considered the current quarter as a favorable time to buy big-ticket items. Consumers' outlook on buying conditions was most upbeat for real estate, followed by consumer durables and motor vehicles. Respondents cited real property as a profitable investment, consumer durables as a family convenience, and motor vehicle as a necessity for business and personal use.

By geographical area, consumers' outlook on buying conditions followed the trend at the national level. Consistent with the more bullish outlook of AONCR respondents, buying conditions on all big-ticket items were seen as more favorable in AONCR than in NCR.

Buying Intentions

Buying intentions pick up in the year ahead.

Consumers' sentiment on buying big-ticket items in the next 12 months likewise improved, reflecting their more buoyant outlook in the year ahead. Respondents indicated that they intended to buy primarily consumer durables (13.1 percent), followed by real property (8.4 percent) and by motor vehicles (5.7 percent).

The number of AONCR respondents who intended to buy big-ticket items in the year ahead increased from 7.3 percent in Q1 2011 to 9.6 percent in Q2 2011. Meanwhile, buying intentions in NCR remained steady.



Selected Economic Indicators

Over the next 12 months, respondents expect interest and inflation rates to go up and the exchange rate to weaken.

Consumers expected interest and inflation rates to go up in the next 12 months. The inflation outlook of consumers could be attributed to the expected increase in fuel prices, which they anticipated would pull up the prices of basic commodities in the year ahead. Respondents expected inflation to increase to 10.4 percent in the next 12 months. Meanwhile, respondents expected unemployment to edge slightly lower over the next 12 months, with the index at 67.0 percent from 67.3 percent in the previous quarter. More respondents anticipated that the peso would depreciate against the dollar as the CI on the exchange rate dropped to -5.7 percent in Q2 2011 from -3.0 percent in the previous quarter.

Expenditures of Overseas Filipino Workers (OFWs)

OFW households utilize their remittances primarily for food, education, medical expenses, and debt payments in Q2 2011.

The bulk of OFW households (97.2 percent) used remittances for food. More than two-thirds of households surveyed (69.4 percent) allocated their remittances for education, 59.6 percent for medical payments and 46.4 percent for debt payments. The percentage of OFW households that utilized their remittances for savings went up to 44.0 percent (from 41.4 percent in Q1 2011). Meanwhile, the percentage that apportioned part of their remittances to purchase consumer durables, car/motor vehicles and houses and lots increased compared to the previous quarter's survey results. Likewise, the use of OFW remittances for investments increased to 6.8 percent from 5.7 percent in Q1 2011.

The utilization pattern of remittances was broadly similar in both NCR and AONCR. Notably, both areas indicated increased use of remittances for consumer durables, car and motor vehicles and savings, and decreased spending on education, medical expenses, and debt payments. However, while more respondents in the NCR indicated use of remittances for housing, AONCR respondents expressed an increased preference for investments.

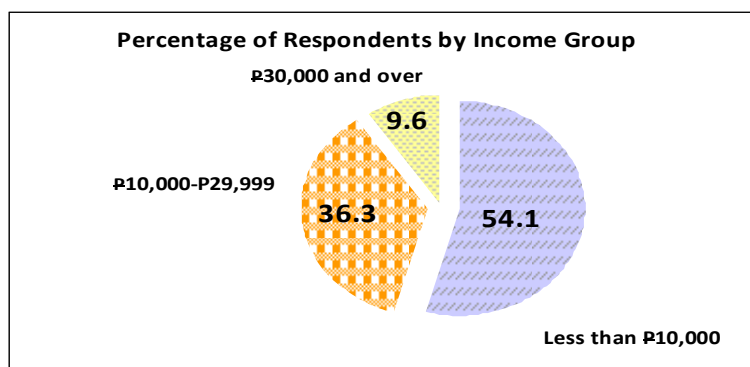


About the Survey

Survey respondents total 5,700 households nationwide.

The Bangko Sentral ng Pilipinas expanded the Consumer Expectations Survey (CES) into a nationwide survey beginning Q1 2007. Earlier, the survey was conducted only in the NCR (survey started in Q3 2004). The CES samples were drawn from the National Statistics Office's (NSO) Master Sample List of Households, which is considered a representative sample of households nationwide. The said master sample was generated using a stratified multi-stage probability sampling scheme. For Q2 2011, the CES was conducted during the period 18-30 April 2011 with a total sample size of 5,889 households, of which 3,044 (51.7 percent) were from the NCR and 2,845 (48.3 percent) from the AONCR.

The nationwide total survey response rate for Q2 2011 was 96.8 percent (from 97.1 percent in the last quarter's survey). By area, the response rate was 96.6 percent in NCR and 96.9 percent in AONCR. Majority of the respondents (54.1 percent) were from the low-income group, 36.3 percent were from the middle-income group, and 9.6 percent belonged to the high-income group.



Consumer Expectations Survey

Philippines
Q1 2007 - Q2 2011

	2007				2008				2009				2010				2011	
	Q1	Q2	Q3	Q4	Q1	Q2	Q3	Q4	Q1	Q2	Q3	Q4	Q1	Q2	Q3	Q4	Q1	Q2
1. Overall Consumer Outlook: Composite Index																		
Current Quarter	-33.3	-26.0	-23.6	-33.6	-32.1	-43.8	-52.8	-40.3	-25.7	-34.2	-31.9	-36.0	-27.6	-28.7	-14.0	-8.5	-23.1	-24.1
NCR	-23.3	-24.5	-23.4	-35.0	-24.5	-42.1	-46.6	-32.8	-21.5	-34.3	-30.6	-36.2	-25.6	-27.5	-13.4	-10.0	-21.9	-24.5
AONCR	-35.2	-26.3	-23.7	-33.4	-33.2	-44.1	-53.8	-41.5	-26.4	-34.2	-32.1	-36.0	-27.9	-28.8	-14.1	-8.3	-23.3	-24.0
Next 3 Months	-11.1	-6.7	4.1	-4.6	-3.4	-26.9	-25.1	-11.2	-6.2	-13.2	-3.7	-10.5	-4.8	-1.8	15.3	11.9	-6.2	-7.8
NCR	-7.8	-1.9	2.6	-1.2	3.6	-20.7	-23.6	-11.8	-9.1	-12.5	-4.0	-13.9	-2.5	-0.5	17.0	10.3	-8.4	-11.1
AONCR	-11.7	-7.5	4.3	-5.1	-4.4	-27.9	-25.4	-11.1	-5.7	-13.3	-3.7	-10.0	-5.1	-2.0	15.0	12.1	-5.8	-7.3
Next 12 Months	0.8	5.8	7.9	5.5	6.6	-20.3	-23.9	-10.7	-2.3	-7.6	-0.9	-0.8	5.1	10.0	33.4	25.9	1.2	4.4
NCR	12.3	14.0	13.4	9.0	16.3	-16.8	-18.7	-9.4	-2.2	-7.8	5.1	6.1	17.1	22.9	49.4	35.1	9.4	6.4
AONCR	-1.3	4.3	7.0	5.0	5.1	-20.8	-24.7	-10.9	-2.3	-7.6	-1.9	-2.0	3.2	7.9	30.8	24.5	-0.1	4.0
2. Consumer outlook indices on the current economic and family condition: Current Quarter																		
Philippines																		
Economic Condition	-47.5	-40.4	-36.1	-55.9	-53.6	-73.0	-81.2	-69.9	-44.6	-56.8	-54.4	-63.6	-50.7	-53.6	-19.6	-6.8	-36.8	-41.9
Less than P10,000	-49.9	-43.4	-36.8	-58.6	-56.6	-71.9	-81.2	-70.4	-45.5	-55.8	-56.4	-64.1	-53.4	-52.2	-23.3	-10.7	-39.5	-44.6
P10,000-P29,999	-41.9	-33.8	-35.9	-52.4	-48.4	-75.3	-81.2	-70.1	-43.0	-58.3	-50.8	-64.1	-46.8	-56.1	-12.1	-0.7	-31.5	-37.6
P30,000 and over	-27.1	-23.5	-23.3	-36.2	-47.6	-73.9	-82.4	-65.2	-42.9	-59.3	-49.5	-56.0	-40.0	-54.6	-14.4	6.0	-33.2	-35.6
Family Financial Situation	-32.8	-25.6	-25.2	-28.9	-27.9	-40.6	-51.5	-35.0	-22.8	-31.6	-28.6	-29.5	-21.2	-23.2	-17.9	-16.4	-23.7	-22.4
Less than P10,000	-38.6	-31.7	-33.0	-39.8	-36.2	-49.6	-65.4	-53.5	-43.6	-42.0	-41.1	-40.2	-32.2	-34.6	-27.8	-27.8	-34.9	-33.7
P10,000-P29,999	-16.6	-12.5	-10.1	-11.2	-14.0	-27.9	-37.2	-20.1	-4.8	-16.0	-9.2	-15.9	-5.1	-9.2	-2.7	-0.5	-7.4	-7.8
P30,000 and over	-1.5	8.3	10.2	7.5	-2.8	-1.9	-16.9	2.2	7.2	3.7	14.8	11.9	21.8	12.1	24.9	31.6	14.8	19.3
Family Income	-19.7	-12.1	-9.6	-16.0	-14.7	-17.8	-25.8	-15.8	-9.8	-14.2	-12.7	-15.0	-10.8	-9.2	-4.4	-2.3	-8.7	-7.9
Less than P10,000	-26.4	-19.0	-15.4	-27.1	-23.3	-26.0	-34.6	-26.8	-19.3	-22.8	-23.0	-25.2	-20.0	-19.2	-11.7	-11.2	-17.8	-16.9
P10,000-P29,999	-1.2	2.9	1.1	1.7	0.0	-5.5	-12.8	0.8	6.7	-1.1	2.5	-1.5	2.8	5.6	6.8	10.4	5.6	3.4
P30,000 and over	13.9	24.2	22.7	25.7	10.1	13.8	7.3	16.4	11.0	14.3	26.6	22.3	25.5	12.0	26.6	34.7	17.8	25.5
NCR																		
Economic Condition	-41.7	-39.7	-37.7	-57.6	-40.8	-75.8	-78.8	-64.0	-47.0	-64.3	-55.9	-67.6	-53.3	-59.0	-22.3	-12.1	-36.0	-43.6
Less than P10,000	-48.9	-45.2	-41.2	-66.4	-44.6	-79.3	-81.2	-65.8	-48.9	-63.1	-58.3	-67.6	-57.6	-63.0	-22.3	-19.5	-40.8	-49.7
P10,000-P29,999	-35.9	-36.2	-36.3	-51.7	-38.5	-74.0	-77.1	-61.8	-45.7	-67.3	-54.3	-69.4	-49.5	-56.0	-24.1	-7.9	-34.1	-39.1
P30,000 and over	-19.7	-23.7	-21.0	-29.9	-28.3	-67.7	-74.1	-63.7	-44.9	-59.7	-51.3	-61.4	-51.6	-57.0	-13.9	-2.6	-27.3	-38.9
Family Financial Situation	-20.5	-25.2	-23.0	-32.5	-23.5	-38.0	-43.2	-26.8	-13.8	-26.0	-25.9	-27.3	-16.2	-17.1	-13.3	-13.2	-19.9	-19.3
Less than P10,000	-29.6	-33.4	-31.9	-48.4	-35.3	-51.7	-59.8	-43.9	-33.0	-39.5	-40.1	-45.1	-38.6	-40.3	-31.2	-31.7	-36.9	-40.6
P10,000-P29,999	-10.4	-20.7	-18.4	-19.9	-15.4	-31.9	-32.9	-17.4	-3.9	-17.8	-17.2	-19.0	-8.3	-8.0	-4.3	-7.3	-13.5	-9.8
P30,000 and over	-5.3	3.1	12.8	7.4	9.7	-2.4	-8.1	11.7	16.7	2.4	5.4	9.8	28.1	21.8	23.3	27.6	13.1	19.5
Family Income	-7.7	-8.7	-9.6	-14.7	-9.2	-12.5	-17.9	-7.5	-3.9	-12.5	-9.9	-13.8	-7.4	-6.3	-4.7	-4.6	-9.8	-10.7
Less than P10,000	-17.5	-20.2	-16.4	-30.0	-17.9	-24.1	-30.7	-18.8	-15.0	-25.1	-20.6	-27.6	-23.9	-24.5	-17.2	-15.6	-22.2	-25.5
P10,000-P29,999	1.3	-0.3	-5.4	-2.2	-3.2	-6.9	-8.6	0.8	3.7	-3.9	-3.8	-6.6	-0.8	1.9	0.6	-1.6	-4.5	-4.2
P30,000 and over	16.8	19.7	14.2	21.2	15.1	16.7	5.0	10.8	6.2	10.3	15.8	12.7	22.5	20.4	25.8	21.8	12.2	16.9



Consumer Expectations Survey
Philippines
Q1 2007 - Q2 2011

	2007				2008				2009				2010				2011	
	Q1	Q2	Q3	Q4	Q1	Q2	Q3	Q4	Q1	Q2	Q3	Q4	Q1	Q2	Q3	Q4	Q1	Q2
2. Consumer outlook indices on the current economic and family condition: Current Quarter (Continued)																		
AONCR																		
Economic Condition	-48.6	-40.5	-35.8	-55.6	-55.6	-72.6	-81.6	-70.9	-44.2	-55.5	-54.1	-62.9	-50.3	-52.7	-19.2	-6.0	-36.9	-41.6
Less than ₱10,000	-50.0	-43.2	-36.3	-57.7	-57.9	-71.1	-81.1	-70.9	-45.2	-55.0	-56.2	-63.7	-53.0	-51.1	-23.4	-9.8	-39.4	-44.0
₱10,000-₱29,999	-44.1	-33.0	-35.8	-52.5	-50.6	-75.6	-82.1	-72.0	-42.3	-56.1	-50.0	-62.8	-46.0	-56.1	-8.6	1.2	-30.8	-37.2
₱30,000 and over	-33.0	-23.3	-24.3	-39.4	-53.4	-76.3	-86.3	-65.7	-42.2	-59.2	-48.8	-54.1	-35.1	-53.7	-14.6	10.0	-35.7	-34.6
Family Financial Situation	-35.0	-25.7	-25.6	-28.4	-28.6	-41.0	-52.8	-36.4	-24.3	-32.5	-29.0	-29.9	-22.1	-24.2	-18.6	-16.9	-24.3	-22.9
Less than ₱10,000	-39.8	-31.5	-33.1	-38.7	-36.3	-49.4	-61.1	-46.0	-34.0	-42.3	-41.2	-39.7	-31.6	-34.0	-27.5	-27.4	-34.7	-33.0
₱10,000-₱29,999	-18.9	-9.8	-7.9	-9.4	-13.6	-27.0	-38.2	-20.7	-5.1	-15.5	-7.3	-15.2	-4.1	-9.5	-2.3	1.4	-5.8	-7.2
₱30,000 and over	1.6	11.7	9.1	7.6	-6.6	-1.7	-20.9	-0.9	4.0	4.1	18.1	12.6	19.1	8.7	25.5	33.4	15.5	19.2
Family Income	-21.9	-12.7	-9.6	-16.2	-15.5	-18.7	-27.0	-17.1	-10.7	-14.5	-13.2	-15.2	-11.4	-9.6	-4.4	-1.9	-8.6	-7.5
Less than ₱10,000	-27.5	-18.9	-15.3	-26.7	-23.9	-26.3	-35.0	-27.7	-19.8	-22.6	-23.3	-25.0	-19.7	-18.7	-11.2	-10.8	-17.4	-16.0
₱10,000-₱29,999	-2.1	3.9	2.8	2.5	0.7	-5.2	-13.7	0.7	7.6	-0.5	4.0	-0.3	3.8	6.6	8.5	13.7	8.2	5.5
₱30,000 and over	11.6	27.2	26.4	28.0	8.6	12.7	8.4	18.3	12.6	15.5	30.4	25.8	26.8	9.0	26.9	40.6	20.2	28.2
3. Consumer outlook indices on economic and family condition: Next Quarter																		
Philippines																		
Economic Condition	-25.2	-16.9	-7.4	-24.8	-19.4	-46.4	-47.2	-27.0	-21.2	-25.1	-18.0	-28.1	-12.4	-6.3	24.8	18.2	-17.7	-16.6
Less than ₱10,000	-26.3	-20.1	-8.7	-27.4	-20.5	-46.5	-47.1	-26.9	-20.4	-26.2	-19.7	-28.2	-14.4	-8.8	20.6	14.1	-18.6	-18.3
₱10,000-₱29,999	-22.8	-9.3	-5.0	-21.2	-18.8	-46.7	-48.1	-26.9	-22.5	-22.1	-15.2	-29.6	-9.3	-2.8	32.8	23.9	-17.8	-13.6
₱30,000 and over	-16.5	-6.7	-0.4	-7.9	-6.5	-44.1	-44.2	-28.8	-22.5	-26.7	-12.2	-20.6	-4.2	-1.5	34.5	36.7	-7.9	-13.6
Family Financial Situation	-9.0	-7.9	4.4	-0.9	-3.2	-28.6	-24.5	-8.2	-3.5	-12.0	-0.9	-6.5	-4.3	-4.6	7.3	6.2	-5.4	-9.3
Less than ₱10,000	-14.2	-12.0	0.7	-9.0	-6.8	-34.2	-30.7	-13.9	-8.4	-17.7	-7.2	-11.1	-10.2	-11.7	2.5	1.2	-9.9	-15.0
₱10,000-₱29,999	5.8	1.6	12.0	11.7	3.0	-21.3	-15.0	-0.4	5.0	-3.6	7.2	-0.8	5.6	4.3	15.7	13.6	0.0	-2.1
₱30,000 and over	14.4	7.3	16.6	32.8	5.3	-1.6	-3.2	11.4	7.0	6.7	28.7	11.7	13.2	16.5	21.5	25.1	14.8	11.4
Family Income	1.0	4.8	15.3	11.9	12.6	-5.6	-3.7	1.7	6.1	-2.5	7.7	3.0	2.4	5.6	13.8	11.2	4.6	2.4
Less than ₱10,000	-3.3	1.0	11.8	5.6	7.5	-9.2	-7.4	-1.3	3.7	-6.2	3.9	0.1	-0.5	0.4	11.0	8.6	2.4	-1.4
₱10,000-₱29,999	13.5	13.5	24.4	22.3	22.2	0.2	1.9	6.8	11.4	4.2	13.7	5.6	6.4	13.3	19.5	14.8	8.0	7.0
₱30,000 and over	19.7	20.7	13.6	32.8	17.5	5.7	10.0	7.7	5.3	4.4	21.2	17.8	15.0	16.2	17.8	21.2	11.8	17.6
NCR																		
Economic Condition	-24.6	-13.4	-8.4	-15.8	-9.3	-39.9	-43.9	-27.5	-26.9	-26.3	-17.8	-32.1	-12.3	-8.1	23.4	16.4	-18.7	-24.5
Less than ₱10,000	-29.0	-17.3	-11.9	-23.0	-9.4	-41.5	-49.4	-31.5	-26.1	-28.0	-20.9	-32.9	-17.1	-11.8	18.9	5.4	-17.7	-27.7
₱10,000-₱29,999	-22.0	-10.2	-5.6	-10.7	-9.6	-39.3	-38.8	-25.0	-29.3	-25.4	-14.6	-32.0	-11.1	-6.8	25.2	23.1	-19.4	-22.6
₱30,000 and over	-6.9	-6.5	1.2	5.2	-5.7	-34.8	-39.5	-19.7	-20.3	-22.0	-15.8	-30.1	-1.5	-1.1	34.4	28.8	-19.4	-20.3
Family Financial Situation	-3.4	-3.0	1.4	-1.4	3.1	-21.4	-23.2	-11.5	-4.9	-10.3	-1.1	-9.5	-0.7	-0.9	13.2	6.4	-8.1	-9.4
Less than ₱10,000	-10.3	-6.5	-3.4	-11.0	-0.9	-29.7	-36.6	-20.8	-13.4	-17.7	-10.1	-19.2	-12.5	-10.7	3.6	-5.6	-17.0	-22.5
₱10,000-₱29,999	2.7	-0.5	2.9	5.7	5.8	-17.6	-12.4	-5.2	-0.5	-5.0	4.8	-2.8	3.7	3.7	19.0	12.9	-3.7	-3.1
₱30,000 and over	14.9	5.0	26.2	25.3	15.2	0.1	-2.2	5.9	8.9	2.6	17.9	3.8	22.0	13.1	28.6	22.9	5.6	13.3
Family Income	4.7	10.8	14.8	13.7	16.8	-1.0	-3.7	3.4	4.6	-0.9	7.0	-0.1	5.6	7.5	14.4	8.2	1.4	0.5
Less than ₱10,000	-0.7	7.4	13.3	5.0	13.3	-4.5	-12.1	0.1	1.0	-4.6	2.6	-4.1	1.2	2.6	8.5	2.0	-3.6	-6.6
₱10,000-₱29,999	10.1	13.9	15.0	21.6	19.2	0.5	3.2	5.1	6.5	1.8	10.3	0.9	7.1	10.0	17.6	12.6	4.2	4.1
₱30,000 and over	16.0	15.7	24.5	29.8	25.9	8.5	9.1	11.7	10.4	5.1	14.9	11.0	14.4	13.7	25.6	13.0	7.8	12.0



Consumer Expectations Survey

Philippines

Q1 2007 - Q2 2011

	2007				2008				2009				2010				2011	
	Q1	Q2	Q3	Q4	Q1	Q2	Q3	Q4	Q1	Q2	Q3	Q4	Q1	Q2	Q3	Q4	Q1	Q2
3. Consumer outlook indices on economic and family condition: Next Quarter (Continued)																		
AONCR																		
Economic Condition	-25.4	-17.5	-7.2	-26.2	-21.0	-47.5	-47.8	-27.0	-20.2	-24.9	-18.0	-27.4	-12.4	-6.1	25.0	18.5	-17.5	-15.3
Less than P10,000	-25.9	-20.4	-8.3	-28.0	-21.8	-47.1	-46.8	-26.4	-19.8	-26.0	-19.6	-27.7	-14.2	-8.4	20.8	14.9	-18.6	-17.3
P10,000-P29,999	-23.2	-9.0	-4.8	-23.4	-20.9	-48.5	-50.2	-27.3	-20.7	-21.3	-15.3	-29.0	-8.8	-1.7	35.0	24.1	-17.3	-11.1
P30,000 and over	-24.2	-6.8	-1.1	-14.5	-6.8	-47.8	-46.4	-31.8	-23.2	-28.1	-10.9	-17.1	-5.4	-1.6	34.5	40.3	-3.0	-11.5
Family Financial Situation	-10.0	-8.8	4.9	-0.8	-4.2	-29.7	-24.7	-7.7	-3.3	-12.3	-0.9	-6.0	-4.9	-5.2	6.3	6.2	-5.0	-9.3
Less than P10,000	-14.7	-12.6	1.2	-8.8	-7.4	-34.7	-30.0	-13.1	-7.9	-17.7	-6.8	-10.2	-10.0	-11.8	2.4	1.9	-9.2	-14.2
P10,000-P29,999	6.9	2.3	14.3	13.0	2.4	-22.2	-15.5	0.8	6.5	-3.2	7.7	-0.3	6.2	4.4	14.7	13.8	1.0	-1.9
P30,000 and over	14.1	8.8	12.4	36.6	2.2	-2.3	-3.6	13.3	6.4	8.1	32.6	14.5	9.4	17.7	19.1	26.1	18.8	10.9
Family Income	0.3	3.7	15.4	11.6	11.9	-6.3	-3.7	1.4	6.3	-2.8	7.8	3.5	1.9	5.3	13.7	11.6	5.2	2.7
Less than P10,000	-3.7	0.3	11.6	5.7	6.9	-9.7	-6.8	-1.5	4.0	-6.3	4.0	0.6	-0.7	0.2	11.2	9.3	3.0	-0.9
P10,000-P29,999	14.7	13.3	26.8	22.5	22.9	0.2	1.7	7.2	12.8	4.8	14.4	6.8	6.2	14.2	20.1	15.4	9.0	7.8
P30,000 and over	22.8	24.0	8.9	34.3	15.0	4.6	10.4	6.4	3.5	4.2	23.5	20.3	15.2	17.1	15.1	25.1	13.5	19.4
4. Consumer outlook indices on economic and family condition: Next 12 Months																		
Philippines																		
Economic Condition	-15.2	-7.1	-5.8	-15.9	-13.2	-44.3	-48.9	-31.0	-20.2	-27.6	-15.5	-16.1	1.1	7.4	51.9	35.4	-11.8	-6.8
Less than P10,000	-18.1	-10.8	-8.6	-20.5	-15.2	-44.7	-50.4	-31.3	-21.0	-29.8	-18.7	-18.4	-2.8	1.0	46.3	30.1	-14.4	-10.3
P10,000-P29,999	-8.0	1.4	0.8	-9.4	-10.7	-44.8	-46.8	-29.9	-18.6	-22.5	-10.7	-15.4	8.4	16.4	61.8	44.1	-10.2	-1.9
P30,000 and over	5.7	7.3	-2.0	10.7	-0.7	-37.6	-41.5	-32.3	-19.2	-27.1	-4.2	3.4	9.3	22.5	68.8	51.3	6.8	4.1
Family Financial Situation	4.0	5.8	8.9	9.5	9.5	-19.6	-23.1	-7.6	1.8	-3.9	1.2	0.7	4.4	7.5	23.0	19.0	2.1	5.1
Less than P10,000	-2.0	1.4	4.3	2.9	4.1	-25.4	-30.1	-14.5	-3.9	-10.9	-6.6	-6.6	-2.7	0.0	16.8	12.0	-4.7	-1.6
P10,000-P29,999	20.6	15.0	18.7	19.8	18.5	-12.6	-12.5	2.8	11.3	8.1	13.2	10.3	14.8	17.6	33.9	30.5	11.0	14.7
P30,000 and over	37.3	31.9	22.3	37.2	26.3	10.4	2.5	12.9	16.3	14.1	28.3	26.2	32.3	26.4	41.4	39.8	30.1	25.3
Family Income	13.6	18.7	20.7	23.0	23.6	3.2	0.3	6.6	11.5	8.5	11.6	12.9	9.9	15.2	25.2	23.4	13.3	14.9
Less than P10,000	7.9	14.0	16.8	16.2	18.5	-2.7	-5.0	1.4	7.3	3.6	7.1	7.8	4.3	10.0	20.6	18.9	8.1	10.7
P10,000-P29,999	29.0	29.7	28.7	34.4	32.5	13.8	7.1	14.4	19.7	18.4	19.0	20.9	18.8	22.9	34.2	30.6	22.1	21.1
P30,000 and over	44.8	36.9	33.8	42.5	35.9	16.0	25.0	21.9	16.4	15.1	25.8	26.4	28.8	25.8	34.4	37.9	26.0	27.3
NCR																		
Economic Condition	-0.4	2.1	5.1	-7.9	-0.1	-41.3	-42.3	-32.0	-23.7	-29.7	-7.0	-6.2	9.8	18.2	67.1	47.0	-1.1	-6.0
Less than P10,000	-3.8	-2.1	2.8	-13.1	-3.5	-44.1	-48.2	-33.5	-25.4	-34.0	-8.6	-9.7	6.6	13.4	63.2	32.5	-4.5	-10.3
P10,000-P29,999	3.7	6.3	8.2	-4.3	3.0	-39.7	-36.6	-30.5	-22.8	-27.6	-5.9	-5.0	9.6	19.1	69.3	56.6	0.6	-4.0
P30,000 and over	3.2	5.2	4.6	8.3	5.2	-36.0	-36.1	-30.9	-20.7	-18.5	-4.0	2.9	20.3	29.6	73.9	61.0	4.3	1.6
Family Financial Situation	14.5	13.9	13.2	8.8	19.3	-16.4	-14.8	-8.7	0.8	-3.3	7.7	8.7	17.6	21.6	41.9	29.2	9.3	9.1
Less than P10,000	9.0	8.0	9.8	0.1	13.1	-30.2	-28.6	-17.2	-4.3	-15.9	-2.7	-0.9	2.7	8.0	34.0	14.4	-0.5	-3.3
P10,000-P29,999	19.9	16.9	15.3	15.8	25.2	-7.8	-5.2	-4.8	-0.7	7.3	14.7	14.3	24.6	27.9	46.0	38.5	14.0	13.6
P30,000 and over	26.3	35.5	25.5	30.5	27.5	11.2	11.2	13.3	25.2	13.6	29.0	24.9	41.4	40.9	56.9	45.5	25.0	35.7
Family Income	22.9	26.0	21.9	25.9	29.7	7.4	0.9	12.4	16.2	9.5	14.5	15.9	23.8	28.9	39.3	29.0	19.9	16.2
Less than P10,000	17.3	19.3	20.0	16.8	22.9	-0.1	-9.3	7.0	13.1	2.2	10.9	8.4	15.0	22.0	35.2	21.1	13.6	7.8
P10,000-P29,999	29.5	30.8	23.2	33.9	35.4	11.7	8.0	14.3	17.4	16.0	16.1	22.0	29.1	31.7	41.0	32.6	23.3	19.5
P30,000 and over	30.0	42.6	27.6	44.1	42.2	23.3	20.5	27.9	22.4	17.6	25.0	22.8	33.9	40.1	49.7	42.8	28.1	33.2



Consumer Expectations Survey
Philippines
Q1 2007 - Q2 2011

	2007				2008				2009				2010				2011	
	Q1	Q2	Q3	Q4	Q1	Q2	Q3	Q4	Q1	Q2	Q3	Q4	Q1	Q2	Q3	Q4	Q1	Q2
4. Consumer outlook indices on economic and family condition: Next 12 Months (Continued)																		
AONCR																		
Economic Condition	-17.9	-8.8	-7.5	-17.2	-15.2	-44.8	-49.9	-30.8	-19.6	-27.2	-16.9	-17.7	-0.3	5.6	49.4	33.5	-13.6	-7.0
Less than P10,000	-19.9	-11.8	-9.9	-21.5	-16.5	-44.8	-50.7	-31.0	-20.6	-29.3	-19.9	-19.4	-3.7	-0.3	44.5	29.8	-15.4	-10.3
P10,000-P29,999	-12.2	-0.3	-1.2	-10.4	-13.8	-46.1	-49.0	-29.8	-17.4	-21.3	-11.9	-17.9	8.0	15.8	59.6	40.7	-13.1	-1.3
P30,000 and over	7.8	8.7	-4.9	11.9	-2.5	-38.3	-44.0	-32.8	-18.7	-29.9	-4.3	3.5	4.5	20.1	67.0	46.9	7.8	4.9
Family Financial Situation	2.1	4.4	8.2	9.6	8.0	-20.2	-24.4	-7.4	2.0	-3.9	0.1	-0.6	2.3	5.2	19.9	17.4	0.9	4.4
Less than P10,000	-3.4	0.7	3.7	3.3	3.1	-24.8	-30.3	-14.2	-3.9	-10.3	-7.1	-7.2	-3.2	-0.8	15.0	11.8	-5.1	-1.4
P10,000-P29,999	20.8	14.4	19.5	20.6	17.0	-13.8	-14.0	4.5	14.7	8.3	12.9	9.3	12.1	15.0	30.4	28.4	10.2	15.0
P30,000 and over	46.1	29.6	20.9	40.6	25.9	10.0	-1.6	12.7	13.2	14.3	28.1	26.8	28.4	21.3	35.8	37.2	32.3	21.9
Family Income	11.9	17.4	20.5	22.5	22.6	2.5	0.2	5.7	10.8	8.4	11.2	12.5	7.6	13.0	22.9	22.5	12.3	14.7
Less than P10,000	6.8	13.3	16.4	16.1	18.0	-3.0	-4.5	0.8	6.7	3.8	6.7	7.7	3.3	8.8	19.1	18.7	7.5	11.0
P10,000-P29,999	28.9	29.4	30.2	34.5	31.9	14.3	6.9	14.4	20.4	19.0	19.6	20.6	15.9	20.7	32.2	30.0	21.8	21.5
P30,000 and over	56.8	33.2	36.6	41.6	33.9	13.0	27.2	19.9	14.3	14.3	26.1	27.7	26.6	20.7	28.9	35.7	25.1	25.5
5. Confidence Index on Amount of Expenditures: Next Quarter																		
Philippines	34.2	33.4	35.1	41.3	36.8	57.9	56.9	44.9	40.7	44.4	43.4	41.8	44.6	42.6	34.9	41.5	47.1	48.4
Food	52.7	52.9	58.2	69.2	61.0	84.4	84.4	68.9	63.2	66.1	67.8	66.4	67.8	65.8	55.9	64.9	72.9	71.1
Clothing and Footwear	22.1	25.4	32.5	27.7	23.0	42.3	37.3	31.3	26.0	27.4	31.9	25.5	31.2	30.4	25.5	26.8	27.3	36.4
Fuel	36.3	37.5	37.0	39.8	33.9	65.9	69.2	43.1	39.7	49.2	50.8	46.2	53.2	50.9	35.7	46.1	54.3	57.1
Electricity	44.1	40.8	42.4	45.1	41.5	63.3	62.2	47.5	42.6	50.3	52.9	42.1	57.2	55.7	51.7	57.2	59.6	59.4
Water	23.3	17.4	16.1	19.2	19.4	33.2	32.8	25.3	23.1	27.6	27.4	21.9	32.6	34.4	22.1	27.9	30.8	34.5
House rent	5.4	1.0	1.0	2.2	1.7	18.4	15.8	11.7	10.9	12.9	8.9	11.1	12.9	9.4	5.4	7.8	8.9	10.8
Transportation	37.3	36.8	37.2	40.8	34.5	68.0	82.9	52.2	36.0	51.1	51.2	46.5	46.2	48.7	39.0	43.2	61.4	63.7
Communication	17.6	14.9	15.1	15.7	12.3	33.3	30.2	22.1	20.7	24.5	21.9	19.8	21.5	20.4	17.8	21.6	22.5	28.3
Education	35.5	47.2	36.4	44.4	44.9	60.1	45.9	41.6	40.8	45.7	38.2	34.6	41.8	41.2	27.9	37.4	42.0	50.8
Medical Care	37.3	36.4	34.8	38.9	38.0	59.2	52.5	44.7	40.6	42.7	40.8	33.6	39.6	32.9	25.7	36.8	40.5	45.6
Personal Care & Effects	37.6	37.2	35.0	45.9	42.6	59.8	59.4	47.1	44.4	45.4	39.0	39.7	41.4	38.7	30.2	41.3	48.1	51.5
Hotel & Restaurant	13.4	10.2	12.2	12.7	10.0	26.4	26.0	16.4	15.8	14.6	15.0	13.2	16.5	11.4	8.1	12.2	13.3	20.2
NCR	41.0	35.9	39.0	43.2	40.5	61.0	59.6	52.7	45.0	54.5	51.3	49.3	49.4	45.3	33.1	45.8	54.0	58.0
Food	59.8	57.2	64.8	70.6	62.7	86.2	87.5	78.1	67.6	80.4	78.7	77.2	76.5	70.7	54.0	68.8	81.1	84.2
Clothing and Footwear	21.2	27.9	31.5	26.9	26.5	39.7	35.4	33.4	23.1	28.5	31.7	23.2	26.0	18.8	20.7	17.3	29.6	34.3
Fuel	44.7	47.0	44.4	43.4	55.2	75.2	77.9	61.7	58.1	68.3	64.5	64.7	66.3	64.0	39.3	61.7	77.9	80.7
Electricity	62.3	58.7	56.2	46.8	56.8	73.4	69.0	68.3	62.1	73.4	68.3	64.5	76.2	75.2	64.6	75.4	76.2	84.6
Water	52.3	40.6	35.6	37.5	45.2	58.2	61.1	59.6	53.6	63.8	60.6	56.0	64.3	65.3	51.1	64.2	67.1	74.1
House rent	14.1	3.8	4.3	6.8	6.8	25.6	21.4	18.5	18.6	21.3	18.7	16.8	15.0	14.3	7.0	17.7	15.5	19.9
Transportation	33.5	27.4	38.0	47.0	40.5	71.8	83.6	59.9	35.9	59.2	53.4	49.9	52.1	41.0	29.4	46.3	70.7	76.3
Communication	23.4	14.8	16.8	14.7	16.8	33.8	34.3	26.1	19.0	28.5	26.1	26.2	20.8	13.4	10.6	17.3	25.7	28.1
Education	39.2	45.0	27.9	40.0	43.8	56.8	42.2	43.0	36.8	41.8	37.1	30.8	36.7	42.7	21.3	34.5	42.5	52.1
Medical Care	41.0	26.6	29.7	36.1	35.5	52.4	42.1	38.5	30.9	37.9	35.2	31.9	31.4	17.7	10.1	29.5	36.0	42.8
Personal Care & Effects	39.8	31.8	33.5	43.9	42.1	57.5	51.8	47.8	40.2	47.3	34.3	35.9	35.3	30.8	20.4	32.3	44.1	42.7
Hotel & Restaurant	23.1	16.6	30.6	22.0	21.4	39.9	30.9	22.6	23.6	17.3	16.0	10.6	17.7	2.6	3.5	14.6	17.2	21.4



Consumer Expectations Survey
Philippines
Q1 2007 - Q2 2011

	2007				2008				2009				2010				2011	
	Q1	Q2	Q3	Q4	Q1	Q2	Q3	Q4	Q1	Q2	Q3	Q4	Q1	Q2	Q3	Q4	Q1	Q2
5. Confidence Index on Amount of Expenditures: Next Quarter (Continued)																		
AONCR	32.9	33.0	34.4	41.0	36.2	57.4	56.5	43.7	40.0	42.8	42.1	40.6	43.8	42.2	35.2	40.8	46.0	46.9
Food	51.4	52.2	57.1	69.0	60.7	84.1	83.9	67.3	62.5	63.8	66.0	64.6	66.4	65.0	56.2	64.3	71.6	69.0
Clothing and Footwear	22.3	25.0	32.6	27.8	22.4	42.7	37.6	31.0	26.5	27.2	31.9	25.9	32.1	32.3	26.2	28.4	27.0	36.7
Fuel	34.7	35.8	35.9	39.2	30.6	64.3	67.8	40.1	36.7	46.1	48.6	43.2	51.1	48.8	35.1	43.6	50.5	53.2
Electricity	40.7	37.5	40.2	44.9	39.1	61.7	61.1	44.2	39.4	46.5	50.4	38.4	54.2	52.5	49.6	54.3	56.9	55.3
Water	18.0	13.2	13.0	16.3	15.4	29.1	28.2	19.8	18.1	21.8	22.0	16.3	27.5	29.4	17.5	22.0	24.9	28.1
House rent	3.9	0.5	0.5	1.4	1.0	17.3	14.9	10.6	9.6	11.5	7.4	10.1	12.6	8.6	5.1	6.2	7.9	9.4
Transportation	38.0	38.4	37.1	39.8	33.6	67.3	82.8	51.0	36.0	49.8	50.9	46.0	45.3	49.9	40.5	42.7	59.9	61.7
Communication	16.6	14.9	14.9	15.8	11.6	33.2	29.5	21.5	20.9	23.8	21.2	18.7	21.6	21.6	19.0	22.3	22.0	28.3
Education	34.8	47.6	37.8	45.1	45.0	60.6	46.6	41.4	41.4	46.3	38.3	35.2	42.6	40.9	28.9	37.9	42.0	50.6
Medical Care	36.6	38.1	35.6	39.4	38.3	60.2	54.2	45.7	42.2	43.4	41.7	33.9	40.9	35.3	28.2	38.0	41.2	46.0
Personal Care & Effects	37.1	38.1	35.2	46.2	42.7	60.2	60.6	47.0	45.1	45.0	39.8	40.4	42.4	40.0	31.8	42.8	48.7	52.9
Hotel & Restaurant	11.7	9.1	9.2	11.3	8.2	24.2	25.2	15.4	14.5	14.2	14.9	13.7	16.3	12.8	8.9	11.8	12.7	20.0
6. Percentage of households who consider the current quarter good time to buy																		
Philippines	16.2	19.9	21.0	23.1	20.4	14.7	11.4	15.0	17.5	15.8	18.0	15.5	17.2	17.6	21.0	20.6	17.1	19.5
Consumer Durables	12.9	18.6	19.8	24.3	18.8	13.4	11.2	14.0	16.5	14.7	16.6	15.0	17.1	17.9	21.2	22.3	18.3	18.9
Motor Vehicle	14.6	14.7	15.9	16.4	13.9	9.5	6.1	9.1	11.3	11.5	12.7	10.4	11.3	10.9	12.9	13.9	10.6	11.2
House & Lot	20.9	26.5	27.3	28.5	28.4	21.2	16.9	22.0	24.8	21.1	24.7	21.1	23.3	24.1	28.9	25.5	22.4	28.3
NCR	17.3	19.4	22.9	18.2	18.5	18.6	15.5	17.3	16.4	19.1	20.6	14.7	19.0	22.6	24.9	20.0	16.8	17.0
Consumer Durables	12.4	17.5	24.3	19.9	17.0	18.6	17.1	19.0	17.1	17.5	23.8	16.6	23.5	23.9	26.7	22.6	19.4	18.8
Motor Vehicle	17.5	13.3	15.2	11.5	10.9	10.4	5.1	8.0	9.5	12.2	11.1	8.7	10.1	15.0	16.7	13.7	7.9	8.1
House & Lot	22.0	27.4	29.0	23.1	27.4	26.8	24.4	24.8	22.6	27.4	27.0	18.6	23.4	28.9	31.3	23.7	23.1	24.0
AONCR	16.0	20.0	20.7	23.9	20.7	14.1	10.8	14.6	17.7	15.2	17.6	15.7	17.0	16.8	20.4	20.7	17.2	19.9
Consumer Durables	13.0	18.8	19.1	25.0	19.1	12.6	10.3	13.1	16.4	14.3	15.5	14.8	16.1	17.0	20.3	22.3	18.2	18.9
Motor Vehicle	14.1	14.9	16.0	17.2	14.3	9.3	6.3	9.3	11.6	11.4	12.9	10.7	11.5	10.2	12.3	13.9	11.0	11.7
House & Lot	20.7	26.3	27.0	29.4	28.6	20.3	15.7	21.5	25.2	20.0	24.4	21.5	23.3	23.3	28.5	25.8	22.3	29.0
7. Percentage of households who intend to buy in the next 12 months																		
Philippines	9.3	12.1	13.6	15.3	13.0	7.9	6.0	7.0	7.5	7.5	9.5	7.4	7.3	6.8	7.9	8.7	7.0	9.1
Consumer Durables	14.2	20.5	21.7	26.4	20.3	10.6	8.3	9.5	9.7	9.8	12.7	11.0	10.8	9.7	11.0	12.4	11.3	13.1
Motor Vehicle	5.9	6.3	8.1	8.3	7.6	5.3	3.7	3.9	4.6	5.3	5.6	4.8	4.5	4.3	4.5	5.6	3.8	5.7
House & Lot	7.7	9.5	11.1	11.2	11.2	8.0	5.9	7.6	8.3	7.4	10.3	6.3	6.6	6.5	8.3	7.9	6.1	8.4
NCR	9.1	13.2	19.4	15.4	15.8	8.8	7.6	5.6	5.7	6.9	9.3	5.0	6.3	6.6	7.0	6.8	5.6	5.6
Consumer Durables	13.7	23.0	32.1	26.4	24.7	12.4	11.6	8.7	8.2	9.7	13.9	8.3	11.8	10.6	10.9	11.2	9.3	7.9
Motor Vehicle	6.0	6.1	10.1	8.2	7.5	4.1	3.7	2.3	2.9	3.4	4.1	1.9	2.0	3.8	3.3	3.7	2.5	2.7
House & Lot	7.8	10.5	16.0	11.5	15.2	9.7	7.6	5.6	5.9	7.6	9.8	4.9	5.0	5.5	6.8	5.6	5.0	6.3
AONCR	9.3	11.9	12.7	15.3	12.6	7.8	5.7	7.2	7.8	7.6	9.6	7.7	7.5	6.9	8.1	8.9	7.3	9.6
Consumer Durables	14.2	20.1	20.0	26.4	19.6	10.2	7.8	9.6	9.9	9.8	12.5	11.5	10.7	9.6	11.0	12.6	11.6	14.0
Motor Vehicle	5.9	6.4	7.7	8.4	7.6	5.4	3.7	4.1	4.9	5.6	5.8	5.3	5.0	4.4	4.7	5.9	4.1	6.2
House & Lot	7.7	9.3	10.3	11.1	10.6	7.7	5.6	8.0	8.7	7.4	10.4	6.5	6.8	6.7	8.5	8.3	6.2	8.7



Consumer Expectations Survey

Philippines
Q1 2007 - Q2 2011

	2007				2008				2009				2010				2011	
	Q1	Q2	Q3	Q4	Q1	Q2	Q3	Q4	Q1	Q2	Q3	Q4	Q1	Q2	Q3	Q4	Q1	Q2
8. Indices on Selected Economic Indicators: Next 12 Months																		
Philippines																		
Unemployment Rate Index	69.1	60.0	57.6	61.3	64.5	73.0	76.1	71.1	72.4	73.6	65.1	64.4	55.8	52.4	7.9	25.4	67.3	67.0
Interest Rate Index for Borrowing Money	63.0	55.5	53.6	55.8	48.4	57.0	58.2	46.0	45.4	46.7	46.5	41.3	46.0	39.6	26.4	33.6	43.2	42.2
Exchange Rate Index	-11.4	1.1	19.4	3.4	20.2	0.0	-29.7	-19.8	-10.8	-21.8	-13.2	-4.5	-11.0	-2.7	3.5	12.4	-3.0	-5.7
Change in Prices Index	68.7	67.1	66.9	70.1	66.5	59.3	59.5	47.2	46.2	49.3	49.5	48.5	54.3	49.4	33.0	43.1	55.9	56.9
Inflation Rate	5.9	6.0	5.9	7.4	9.5	12.2	12.4	8.8	8.6	8.7	8.6	8.7	10.4	9.1	5.7	7.6	9.8	10.4
NCR																		
Unemployment Rate Index	63.9	50.4	49.7	56.2	46.9	76.5	78.4	69.5	72.1	72.8	58.7	56.7	47.8	49.8	-12.5	8.6	64.1	67.4
Interest Rate Index for Borrowing Money	63.8	50.7	54.4	50.4	39.5	46.9	51.9	41.2	43.6	43.1	45.4	38.8	41.5	35.4	15.1	25.0	34.3	45.8
Exchange Rate Index	-6.9	7.8	31.2	14.5	23.2	-0.5	-28.5	-18.8	-8.2	-22.7	-4.5	-7.6	-11.7	2.4	10.8	26.1	4.2	-1.0
Change in Prices Index	69.5	60.6	59.0	63.6	65.0	61.6	61.1	52.2	53.4	56.2	54.6	56.1	55.6	53.3	31.6	43.1	58.6	59.2
Inflation Rate	4.6	4.7	4.3	6.2	7.9	13.5	14.1	9.7	8.5	10.3	10.3	9.6	8.1	8.3	4.4	6.3	9.1	9.8
AONCR																		
Unemployment Rate Index	70.1	61.7	58.8	62.1	67.2	72.4	75.8	71.3	72.5	73.7	66.1	65.7	57.1	52.8	11.2	28.2	67.8	66.9
Interest Rate Index for Borrowing Money	62.9	56.4	53.5	56.7	49.8	58.7	59.2	46.8	45.7	47.3	46.6	41.7	46.7	40.3	28.3	35.0	44.6	41.6
Exchange Rate Index	-12.2	-0.1	17.6	1.6	19.7	0.1	-41.1	-27.8	-15.4	-21.6	-14.9	-4.0	-10.8	-3.7	2.1	9.9	-4.4	-6.6
Change in Prices Index	68.6	68.2	68.1	71.1	70.3	58.9	59.3	46.3	45.0	48.2	48.7	47.3	54.1	48.8	33.3	43.2	55.5	56.5
Inflation Rate	6.1	6.2	6.2	7.5	9.7	11.9	12.1	8.6	8.6	8.4	8.3	8.5	10.8	9.2	5.9	7.8	9.9	10.5
9. Percentage of OFW Households by Type of Use of OFW Remittances																		
Philippines																		
Food	92.1	91.8	94.1	97.3	96.2	95.7	95.6	95.8	94.7	96.2	93.4	95.2	97.0	96.3	96.0	96.7	98.0	97.2
Education	2.3	53.1	53.9	61.2	62.4	62.3	68.2	68.2	69.8	68.2	71.8	65.8	69.5	64.2	71.7	72.6	70.5	69.4
Medical expenses	0.7	24.2	24.5	29.3	38.5	51.2	44.4	57.6	55.2	62.4	63.2	62.2	56.7	51.4	61.6	61.1	62.0	59.6
Debt payments	-	22.9	30.2	34.0	31.1	39.2	36.0	48.9	48.5	51.1	50.0	49.2	48.5	43.3	50.3	49.8	48.4	46.4
Savings	7.2	15.7	19.8	17.5	14.0	31.3	30.4	35.8	40.0	38.3	39.9	44.8	50.4	38.0	43.0	43.7	41.4	44.0
Purchase of Appliances/Consumer Durables	5.2	9.0	10.3	7.5	6.5	20.3	18.0	24.6	24.7	25.9	26.5	26.0	30.0	27.0	31.0	28.9	29.1	33.9
Purchase of House*	2.7	2.5	1.5	1.1	6.1	14.3	12.4	16.1	11.2	10.8	12.1	10.5	15.0	11.9	15.5	11.3	12.3	15.2
Investment	2.3	4.5	4.1	5.9	1.8	3.0	7.4	4.7	5.9	8.3	7.6	7.1	5.8	7.2	7.0	5.8	5.7	6.8
Purchase of Car / motor vehicle	1.6	3.5	1.5	1.4	1.6	5.1	4.4	6.4	5.5	7.0	6.8	6.7	6.6	7.7	11.3	7.7	5.0	10.5
Others	0.7	2.2	2.1	0.7	0.7	6.2	8.4	6.3	4.5	6.1	6.6	6.5	4.5	5.0	7.1	2.6	2.3	2.4
NCR																		
Food and other household needs	92.5	91.1	93.4	96.9	94.6	95.9	94.4	97.3	95.5	96.9	94.1	95.9	97.5	96.7	96.2	97.4	98.1	98.2
Education	1.9	55.1	51.4	62.0	61.7	67.1	69.1	72.8	72.3	64.1	73.0	69.0	75.5	65.0	71.1	70.7	71.8	70.0
Medical expenses	0.4	20.0	21.7	30.6	38.8	45.5	43.2	58.1	58.3	57.6	65.2	60.9	60.5	45.4	60.2	57.6	67.5	64.3
Debt payments	-	25.3	34.0	34.9	30.0	30.5	30.9	47.7	45.5	44.1	47.3	43.5	50.6	39.2	50.4	51.4	51.9	49.5
Savings	4.9	15.1	16.5	14.0	10.8	32.5	30.9	38.6	44.2	38.6	44.1	52.8	62.1	43.1	50.4	45.3	48.7	53.4
Purchase of House*	2.6	1.8	1.9	1.3	8.8	19.1	16.1	19.1	12.4	13.4	18.8	11.8	19.7	13.7	18.0	13.5	13.6	20.1
Purchase of Appliances/Consumer Durables	4.1	6.7	7.1	7.9	5.8	19.1	22.5	29.5	28.9	28.3	32.4	29.9	36.0	28.8	36.6	30.9	33.8	41.0
Purchase of Car / motor vehicle	0.8	4.0	0.9	1.3	2.5	4.1	4.9	7.4	6.6	8.3	9.0	7.7	6.7	6.5	13.3	8.0	5.8	11.0
Investment	1.1	3.1	2.4	5.2	1.3	2.0	8.8	4.0	7.9	10.0	8.6	5.5	4.1	8.5	8.8	2.6	6.2	5.3
Others	0.4	0.9	1.4	0.4	1.3	6.5	6.3	6.4	2.1	4.5	5.5	5.2	1.9	2.0	7.1	2.9	1.0	0.4

* From Q2-Q4 2008, purchase of house included rentals

A quarterly survey conducted by the
Department of Economic Statistics

Bangko Sentral ng Pilipinas
Manila, Philippines
www.bsp.gov.ph



Consumer Expectations Survey

Philippines
Q1 2007 - Q2 2011

	2007				2008				2009				2010				2011	
	Q1	Q2	Q3	Q4	Q1	Q2	Q3	Q4	Q1	Q2	Q3	Q4	Q1	Q2	Q3	Q4	Q1	Q2
9. Percentage of OFW Households by Type of Use of OFW Remittances (Continued)																		
AONCR																		
Food and other household needs	91.6	92.6	94.9	97.6	98.0	95.9	97.2	93.9	94.0	95.4	92.6	94.5	96.4	95.8	95.8	96.0	98.0	96.2
Education	2.8	50.6	56.8	60.4	63.2	67.1	67.0	62.2	67.3	72.3	70.4	62.5	60.9	63.2	72.5	74.7	69.0	68.7
Medical expenses	1.1	29.5	27.8	27.8	38.2	45.5	46.0	57.0	52.2	67.4	60.9	63.6	51.4	59.0	63.6	65.2	55.2	54.6
Debt payments	-	19.9	25.6	33.0	32.4	30.5	42.8	50.4	51.4	58.2	53.0	55.3	45.5	48.5	50.0	48.0	44.0	43.1
Savings	10.7	16.5	23.9	21.2	17.6	32.5	29.8	32.2	35.9	37.9	35.2	36.4	33.6	31.4	32.2	41.8	32.5	34.0
Purchase of Appliances/Consumer Durables	6.7	11.9	14.2	7.1	7.4	19.1	12.1	18.3	20.7	23.5	20.0	21.7	21.4	24.7	22.9	26.7	23.4	26.3
Purchase of House*	2.8	3.4	1.1	0.9	2.9	19.1	7.4	12.2	10.0	8.1	4.8	9.1	8.2	9.6	11.9	8.8	10.7	9.9
Investment	3.9	6.3	6.3	6.6	2.5	2.0	5.6	5.7	4.0	6.7	6.5	8.7	8.2	5.4	4.2	9.5	5.2	8.4
Purchase of Car / motor vehicle	2.8	2.8	2.3	1.4	0.5	4.1	3.7	5.2	4.4	5.6	4.3	5.5	6.4	9.2	8.5	7.3	4.0	9.9
Others	1.1	4.0	2.8	0.9	0.0	6.5	11.2	6.1	6.8	7.7	7.8	7.9	8.2	8.8	7.2	2.2	4.0	4.6

10. Distribution of Households with OFW

Philippines

Number of Respondent Households with OFW	444	423	419	469	477	525	552	562	520	624	533	562	556	570	605	627	605	578
Percentage Over Total Sample Respondents	8.5	8.2	8.6	9.4	9.6	11.4	10.5	10.7	9.8	11.0	10.5	10.7	10.5	10.4	10.8	11.1	10.2	10.1
Number of Households that Received Remittances	425	401	388	441	444	469	500	528	493	575	486	524	534	545	575	584	560	545
Percentage Over Total Households with OFW	95.7	94.8	92.6	94.0	93.1	89.3	90.6	94.0	94.8	92.1	91.2	93.2	96.0	95.6	95.0	93.1	92.6	94.3

NCR

Number of Respondent Households with OFW	266	237	231	248	262	271	310	318	249	314	283	287	322	317	351	345	326	301
Percentage Over Total Sample Respondents	9.9	9.2	9.7	10.1	10.7	12.5	10.8	11.6	9.5	11.2	11.1	10.7	11.1	10.8	11.8	11.9	10.9	10.2
Number of Households that Received Remittances	253	225	212	229	240	246	285	298	242	290	256	271	314	306	339	311	308	283
Percentage Over Total Households with OFW	95.1	94.9	91.8	92.3	91.6	90.8	91.9	93.7	97.2	92.4	90.5	94.4	97.5	96.5	96.6	90.1	94.5	94.0

AONCR

Number of Respondent Households with OFW	178	186	188	221	215	254	242	244	271	310	250	275	234	253	254	282	279	277
Percentage Over Total Sample Respondents	6.9	7.3	7.5	8.8	8.6	10.5	10.0	9.6	10.1	10.8	10.0	10.7	9.7	10.0	9.8	10.3	9.5	10.0
Number of Households that Received Remittances	172	176	176	212	204	223	215	230	251	285	230	253	220	239	236	273	252	262
Percentage Over Total Households with OFW	96.6	94.6	93.6	95.9	94.9	87.8	88.8	94.3	92.6	91.9	92.0	92.0	94.0	94.5	92.9	96.8	90.3	94.6

* From Q2-Q4 2008, purchase of house included rentals



Consumer Expectations Survey
Philippines
Q1 2007 - Q2 2011

	2007				2008				2009				2010				2011	
	Q1	Q2	Q3	Q4	Q1	Q2	Q3	Q4	Q1	Q2	Q3	Q4	Q1	Q2	Q3	Q4	Q1	Q2
11. Percentage Distribution of Respondents by Income Group																		
Philippines																		
Less than P10,000	66.5	62.3	61.9	59.1	58.4	58.2	57.5	57.1	55.5	58.4	58.4	56.1	55.1	52.4	55.9	54.3	54.8	54.1
P10,000 – P29,999	28.6	32.9	33.0	35.9	36.5	34.0	33.6	33.8	36.1	32.6	33.4	34.4	34.9	36.6	36.5	36.9	35.8	36.3
P30,000 – and over	4.9	4.9	5.1	5.0	5.1	7.8	8.9	9.1	8.4	9.0	8.2	9.5	10.0	11.0	7.6	8.8	9.4	9.6
Total	100.0	100.0	100.0	100.0	100.0	100.0	100.0	100.0	100.0	100.0	100.0	100.0	100.0	100.0	100.0	100.0	100.0	100.0
NCR																		
Less than P10,000	54.5	49.6	51.4	51.3	49.4	47.4	49.4	47.6	42.0	47.9	48.9	45.4	42.7	41.2	44.0	41.6	41.4	42.3
P10,000 – P29,999	37.6	42.8	41.1	41.0	43.7	41.0	37.9	40.0	46.3	39.6	39.9	41.1	43.2	44.2	45.8	45.5	44.9	45.0
P30,000 – and over	7.9	7.6	7.6	7.6	6.9	11.6	12.8	12.4	11.7	12.5	11.3	13.5	14.1	14.6	10.2	12.9	13.7	12.7
Total	100.0	100.0	100.0	100.0	100.0	100.0	100.0	100.0	100.0	100.0	100.0	100.0	100.0	100.0	100.0	100.0	100.0	100.0
AONCR																		
Less than P10,000	79.0	75.1	71.9	66.6	67.2	67.9	67.2	67.3	68.7	68.6	68.1	67.3	70.0	65.4	69.4	67.8	68.3	66.8
P10,000 – P29,999	19.2	22.8	25.4	31.0	29.4	27.7	28.5	27.1	26.1	25.8	26.8	27.4	24.9	27.8	25.9	27.8	26.5	27.1
P30,000 – and over	1.8	2.1	2.7	2.4	3.4	4.4	4.3	5.6	5.2	5.5	5.1	5.4	5.1	6.8	4.6	4.5	5.1	6.2
Total	100.0	100.0	100.0	100.0	100.0	100.0	100.0	100.0	100.0	100.0	100.0	100.0	100.0	100.0	100.0	100.0	100.0	100.0

12. Total Sample Households and Response Rate

Philippines																		
Number of Sample Households	5453	5251	5093	5087	5084	4839	5472	5448	5487	5909	5315	5496	5496	5706	5774	5833	6096	5889
Number of Respondents	5239	5130	4876	4969	4962	4597	5271	5264	5290	5680	5054	5250	5306	5479	5577	5643	5920	5700
Response Rate	96.1	97.7	95.7	97.7	97.6	95.0	96.3	96.6	96.4	96.1	95.1	95.5	96.5	96.0	96.6	96.7	97.1	96.8
NCR																		
Number of Sample Households	2879	2689	2558	2526	2522	2306	2990	2850	2724	2973	2717	2830	2999	3104	3101	3004	3064	3044
Number of Respondents	2677	2584	2381	2446	2456	2171	2858	2732	2613	2806	2544	2685	2889	2948	2973	2898	2982	2942
Response Rate	93.0	96.1	93.1	96.8	97.4	94.1	95.6	95.9	95.9	94.4	93.6	94.9	96.3	95.0	95.9	96.5	97.3	96.6
AONCR																		
Number of Sample Households	2574	2562	2535	2561	2562	2533	2482	2598	2763	2936	2598	2666	2497	2602	2673	2829	3032	2845
Number of Respondents	2562	2546	2495	2523	2506	2426	2413	2532	2677	2874	2510	2565	2417	2531	2604	2745	2938	2758
Response Rate	99.5	99.4	98.4	98.5	97.8	95.8	97.2	97.5	96.9	97.9	96.6	96.2	96.8	97.3	97.4	97.0	96.9	96.9

Note:

* From Q2-Q4 2008, purchase of house included rentals

