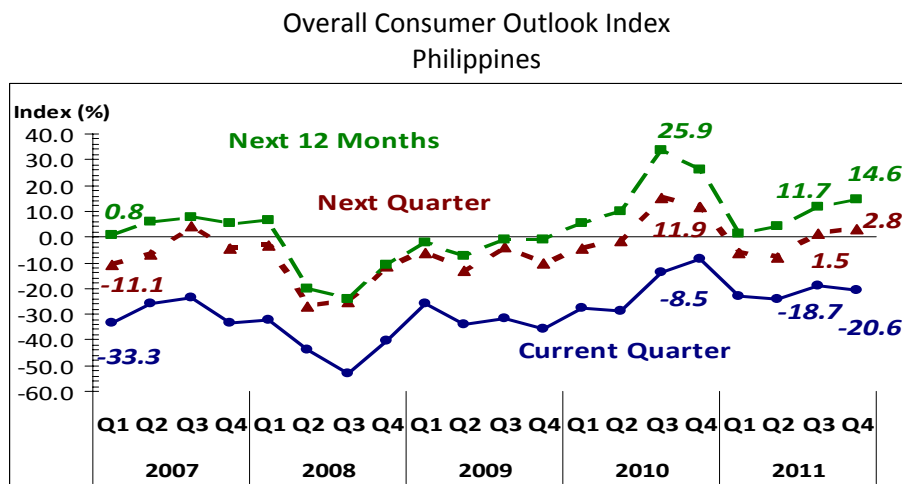


Consumer Confidence Declines Moderately in Q4 2011 But Turns Upbeat in the Year Ahead

Nationwide Consumer Outlook



Consumer outlook turns slightly lower in Q4 2011...

Consumer optimism is slightly lower in Q4 2011 as the overall confidence index (CI) declined to -20.6 percent compared with the prior reading of -18.7 percent in Q3 2011.² This indicates that the number of households with an optimistic view decreased and continued to be less than those who think otherwise. The reasons cited by the majority of the respondents for the less favorable outlook included the damage to crops and businesses caused by typhoons Pedring and Quiel, higher prices of basic commodities and unemployment.³ Less optimistic consumer sentiment was likewise recorded in China, Thailand, India and Singapore.

.. but rises in the next quarter and the year ahead.

Going forward, Filipinos expected better times ahead, with the CI for the next quarter and the year ahead rising to 2.8 percent and 14.6 percent, respectively. The number of households with positive outlook increased and topped those with negative views. Consumers attributed their more favorable outlook to the following factors: (a) more jobs; (b) increased investments; (c) higher salary; and (d) stable prices.

¹ The Consumer Expectations Survey (CES) is a quarterly survey of a random sample of 5,000 households in the Philippines. Results of the CES provide advance indication of consumer sentiments for the current and next quarters and the year ahead as reflected in the overall CI, as well as in selected economic indicators.

² The CI is computed as the percentage of households that answered in the affirmative less the percentage of households that answered in the negative with respect to their views on a given indicator. A positive CI indicates a favorable view, except for the inflation rate and the peso-borrowing rate, where a positive CI indicates the opposite. The overall consumer CI measures the average direction of change in three indicators of consumer confidence - overall conditions of the economy, household finances, and household income.

³ Typhoons Pedring and Quiel visited the country in 27 September 2011 and 30 September 2011, respectively, while the survey period was conducted on 3-14 October 2011.



Consumers' perception about family finances and family income weakens even as outlook on the economy improves in Q4 2011.

Perception was measured on three indicators of consumer confidence—the country's economic condition, family financial situation and family income. The decline in consumer confidence for the current quarter was driven by the less favorable outlook on family finances and family income, which outweighed the improvement in confidence on the country's economic condition. Respondents' expectations of increased number of investors in the country contributed to their upbeat outlook on the country's economy. However, this was offset by the continued high price of goods and services, poor harvest and low income, which dampened their sentiment on their family's finances.

Sentiments decline across all income groups in Q4 2011...

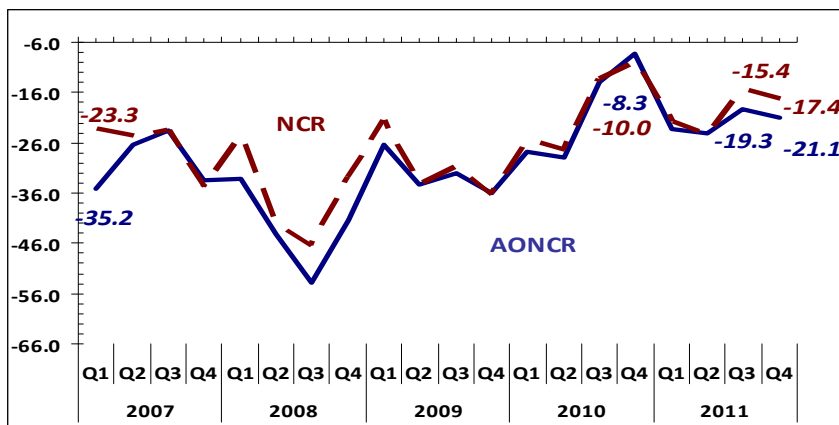
Consumer sentiment across all income groups was less optimistic in the current quarter.⁴ The biggest decline in optimism was registered by the high-income group, followed by the middle- and the low-income groups. Nevertheless, the high-income group remained to be the most optimistic among the survey respondents in Q4 2011.

... but the low- and middle-income groups turn more upbeat in the near term and the year ahead.

In the near term and the year ahead, a more buoyant consumer outlook was observed for all three indicators. This was due largely to the more upbeat expectations of the low- and middle-income groups, which offset the weaker outlook of the high-income group.

NCR and AONCR Consumer Outlook

Current Quarter Consumer Outlook Index for NCR and AONCR



Consumer sentiment in both the NCR and AONCR weakens in Q4 2011...

Following the national trend, consumer sentiment in both the National Capital Region (NCR) and Areas Outside NCR (AONCR) weakened in Q4 2011. In both areas, respondents' views on their family financial situation and family income were lower compared to the previous quarter. Meanwhile, perception on the economic condition of the country improved in AONCR but declined in the NCR.

⁴ Low-income refers to households with monthly family income of less than ₱10,000; middle-income group, ₱10,000– ₱29,999; and high-income group, ₱30,000 and over.

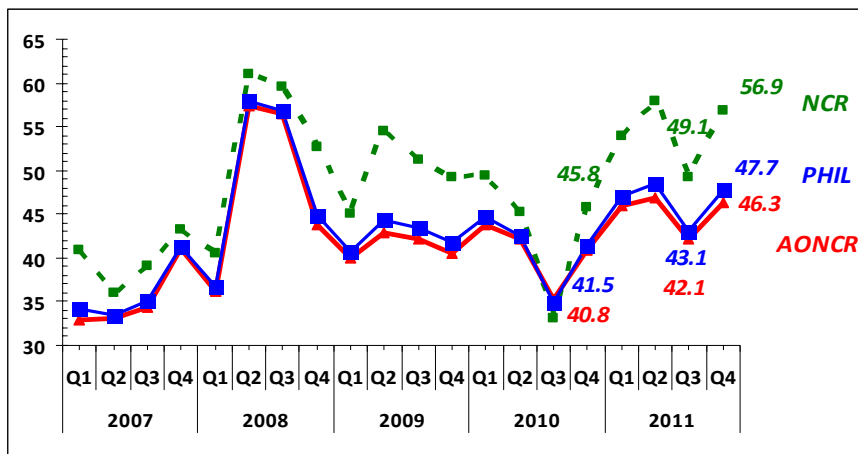


...but turns bullish in the next term and the year ahead due to expectations of more jobs and business opportunities.

For the next 3 months and the year ahead, a more upbeat outlook was registered in both the NCR and AONCR, driven by expectations of increased investments, better business opportunities, more jobs and higher salaries. In both areas, consumers were more bullish on all three indicators—primarily on family income, followed by family financial situation and the economic condition of the country.

Expenditures on Basic Goods and Services

Confidence Index: Expenditures Next Quarter



Spending outlook on basic goods and services improves in Q1 2012.

More households expected their expenditures on basic goods and services to increase in Q1 2012. Respondents nationwide anticipated the increase in expenditures on all types of basic goods and services, particularly, food, electricity and transportation. They attributed the higher expenditures to the expected hikes in the prices of basic commodities over the next 12 months.

By geographic location, the expenditure outlook of NCR and AONCR respondents broadly followed the pattern at the national level.

Expenditures on Big-Ticket Items: Consumer Durables, Motor Vehicles, and House and Lot

Buying conditions are more favorable in the current quarter.

Despite the weaker current quarter sentiment, more respondents considered Q4 2011 a favorable time to buy big-ticket items. The buying conditions index during the quarter reached its highest level in four years. Consumers' outlook on buying conditions was most upbeat for real estate, followed by consumer durables and motor vehicles. Easy installment terms contributed to consumers' favorable buying conditions outlook in the current quarter.

By area, buying conditions on big ticket items were seen as slightly more favorable in AONCR than in NCR, particularly for the purchase of real estate.



Buying intentions also increase in the year ahead.

Buying intentions for big-ticket items in the year ahead surged to 10.0 percent, the highest since Q2 2008. This was largely due to the rise in buying intentions for consumer durables and real estate, which offset the decline in buying intentions for motor vehicles. The overall improvement in buying intentions is consistent with the more favorable consumer sentiment on family income and family financial situation for the near term and the year ahead.

By area, buying intentions for big-ticket items were more favorable in AONCR than in the NCR. The outlook in AONCR followed the national trend—improving for real estate and consumer durables but declining for motor vehicles. Meanwhile, in the NCR, buying intentions improved only for consumer durables. This is consistent with the more upbeat family income expectations of respondents in AONCR for the next 12 months.

Selected Economic Indicators

Consumer perception on selected economic indicators—interest rate, employment and the exchange rate—improves for the year ahead.

Fewer respondents anticipated an increase in the unemployment rate over the next 12 months, indicating an expected improvement in the employment situation in the year ahead. Likewise, fewer respondents expected interest rates to go up in the next 12 months. This is consistent with the latest developments in the financial markets, as several central banks have reduced their policy rates or kept policy rate settings unchanged in order to stimulate their domestic economies in the face of very challenging global economic conditions. Meanwhile, respondents expected inflation to reach 9.6 percent, up from 8.5 percent in the Q3 2011 survey, reflecting expectations of higher prices in the year ahead given pending petitions for electricity rate adjustment and the possibility of higher domestic rice prices. More respondents also expected the peso to appreciate against the US dollar in the next 12 months due to sustained investment and overseas Filipinos' remittance inflows.

Expenditures of Overseas Filipino Workers (OFWs)

More OFW households utilize their remittances for savings and big-ticket items in Q4 2011.

Of the 563 households that received OFW remittances in Q4 2011, 95.0 percent used remittances for food. Nearly three-fourths of the households surveyed (70.0 percent) allocated their remittances for education, 60.9 percent for medical payments and 45.8 percent for debt payments. Likewise, the percentage of OFW households that utilized their remittances for savings increased to 42.6 percent (from 35.5 percent in Q3 2011). Those that apportioned part of their remittances to purchase consumer durables, housing, and motor vehicles also went up compared to the previous quarter's survey results. Meanwhile, the percentage that apportioned part of their remittances for investment dropped quarter-on-quarter (from 9.1 percent to 6.4 percent) but increased year-on-year.



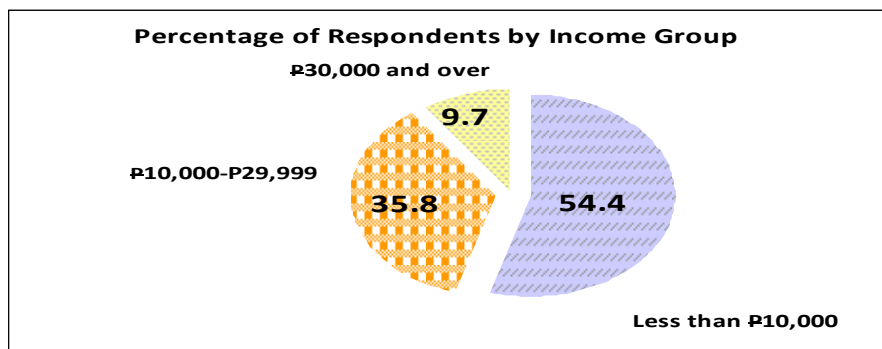
The utilization pattern of NCR and AONCR respondents broadly followed that of OFW households at the national level. However, while fewer OFW households in NCR spent remittances for education and debt payments during the quarter compared to a quarter ago, there were fewer OFW households in AONCR which utilized remittances to purchase consumer durables.

About the Survey

Survey respondents total 5,879 households nationwide.

The Bangko Sentral ng Pilipinas expanded the Consumer Expectations Survey (CES) into a nationwide survey beginning Q1 2007. Earlier, the survey was conducted only in the NCR (survey started in Q3 2004). The CES samples were drawn from the National Statistics Office’s (NSO) Master Sample List of Households, which is considered a representative sample of households nationwide. The said master sample was generated using a stratified multi-stage probability sampling scheme. For Q4 2011, the CES was conducted during the period 3-14 October 2011 with a total sample size of 6,028 households, of which 2,977 (49.4 percent) were from the NCR and 3,051 (50.6 percent) from the AONCR.

The nationwide total survey response rate for Q4 2011 was 97.5 percent (from 97.4 percent in the last quarter’s survey). By area, the response rate was 97.6 percent in NCR and 97.4 percent in AONCR. Majority of the respondents (54.4 percent) were from the low-income group, 35.8 percent were from the middle-income group, and 9.7 percent belonged to the high-income group.



Consumer Expectations Survey
Philippines
Q1 2007 - Q4 2011

	2007				2008				2009				2010				2011			
	Q1	Q2	Q3	Q4	Q1	Q2	Q3	Q4	Q1	Q2	Q3	Q4	Q1	Q2	Q3	Q4	Q1	Q2	Q3	Q4
1. Overall Consumer Outlook: Composite Index																				
Current Quarter	-33.3	-26.0	-23.6	-33.6	-32.1	-43.8	-52.8	-40.3	-25.7	-34.2	-31.9	-36.0	-27.6	-28.7	-14.0	-8.5	-23.1	-24.1	-18.7	-20.6
NCR	-23.3	-24.5	-23.4	-35.0	-24.5	-42.1	-46.6	-32.8	-21.5	-34.3	-30.6	-36.2	-25.6	-27.5	-13.4	-10.0	-21.9	-24.5	-15.4	-17.4
AONCR	-35.2	-26.3	-23.7	-33.4	-33.2	-44.1	-53.8	-41.5	-26.4	-34.2	-32.1	-36.0	-27.9	-28.8	-14.1	-8.3	-23.3	-24.0	-19.3	-21.1
Next 3 Months	-11.1	-6.7	4.1	-4.6	-3.4	-26.9	-25.1	-11.2	-6.2	-13.2	-3.7	-10.5	-4.8	-1.8	15.3	11.9	-6.2	-7.8	1.5	2.8
NCR	-7.8	-1.9	2.6	-1.2	3.6	-20.7	-23.6	-11.8	-9.1	-12.5	-4.0	-13.9	-2.5	-0.5	17.0	10.3	-8.4	-11.1	0.6	0.5
AONCR	-11.7	-7.5	4.3	-5.1	-4.4	-27.9	-25.4	-11.1	-5.7	-13.3	-3.7	-10.0	-5.1	-2.0	15.0	12.1	-5.8	-7.3	1.7	3.1
Next 12 Months	0.8	5.8	7.9	5.5	6.6	-20.3	-23.9	-10.7	-2.3	-7.6	-0.9	-0.8	5.1	10.0	33.4	25.9	1.2	4.4	11.7	14.6
NCR	12.3	14.0	13.4	9.0	16.3	-16.8	-18.7	-9.4	-2.2	-7.8	5.1	6.1	17.1	22.9	49.4	35.1	9.4	6.4	14.4	16.4
AONCR	-1.3	4.3	7.0	5.0	5.1	-20.8	-24.7	-10.9	-2.3	-7.6	-1.9	-2.0	3.2	7.9	30.8	24.5	-0.1	4.0	11.2	14.3
2. Consumer outlook indices on the current economic and family condition: Current Quarter																				
Philippines																				
Economic Condition	-47.5	-40.4	-36.1	-55.9	-53.6	-73.0	-81.2	-69.9	-44.6	-56.8	-54.4	-63.6	-50.7	-53.6	-19.6	-6.8	-36.8	-41.9	-26.4	-25.4
Less than P10,000	-49.9	-43.4	-36.8	-58.6	-56.6	-71.9	-81.2	-70.4	-45.5	-55.8	-56.4	-64.1	-53.4	-52.2	-23.3	-10.7	-39.5	-44.6	-31.1	-28.6
P10,000-P29,999	-41.9	-33.8	-35.9	-52.4	-48.4	-75.3	-81.2	-70.1	-43.0	-58.3	-50.8	-64.1	-46.8	-56.1	-12.1	-0.7	-31.5	-37.6	-21.8	-21.8
P30,000 and over	-27.1	-23.5	-23.3	-36.2	-47.6	-73.9	-82.4	-65.2	-42.9	-59.3	-49.5	-56.0	-40.0	-54.6	-14.4	6.0	-33.2	-35.6	-3.7	-12.1
Family Financial Situation	-32.8	-25.6	-25.2	-28.9	-27.9	-40.6	-51.5	-35.0	-22.8	-31.6	-28.6	-29.5	-21.2	-23.2	-17.9	-16.4	-23.7	-22.4	-22.4	-24.0
Less than P10,000	-38.6	-31.7	-33.0	-39.8	-36.2	-49.6	-65.4	-53.5	-43.6	-42.0	-41.1	-40.2	-32.2	-34.6	-27.8	-27.8	-34.9	-33.7	-37.5	-37.1
P10,000-P29,999	-16.6	-12.5	-10.1	-11.2	-14.0	-27.9	-37.2	-20.1	-4.8	-16.0	-9.2	-15.9	-5.1	-9.2	-2.7	-0.5	-7.4	-7.8	-2.4	-7.0
P30,000 and over	-1.5	8.3	10.2	7.5	-2.8	-1.9	-16.9	2.2	7.2	3.7	14.8	11.9	21.8	12.1	24.9	31.6	14.8	19.3	28.6	24.7
Family Income	-19.7	-12.1	-9.6	-16.0	-14.7	-17.8	-25.8	-15.8	-9.8	-14.2	-12.7	-15.0	-10.8	-9.2	-4.4	-2.3	-8.7	-7.9	-7.4	-12.3
Less than P10,000	-26.4	-19.0	-15.4	-27.1	-23.3	-26.0	-34.6	-26.8	-19.3	-22.8	-23.0	-25.2	-20.0	-19.2	-11.7	-11.2	-17.8	-16.9	-18.0	-23.7
P10,000-P29,999	-1.2	2.9	1.1	1.7	0.0	-5.5	-12.8	0.8	6.7	-1.1	2.5	-1.5	2.8	5.6	6.8	10.4	5.6	3.4	7.0	2.5
P30,000 and over	13.9	24.2	22.7	25.7	10.1	13.8	7.3	16.4	11.0	14.3	26.6	22.3	25.5	12.0	26.6	34.7	17.8	25.5	27.1	29.4
NCR																				
Economic Condition	-41.7	-39.7	-37.7	-57.6	-40.8	-75.8	-78.8	-64.0	-47.0	-64.3	-55.9	-67.6	-53.3	-59.0	-22.3	-12.1	-36.0	-43.6	-27.4	-29.9
Less than P10,000	-48.9	-45.2	-41.2	-66.4	-44.6	-79.3	-81.2	-65.8	-48.9	-63.1	-58.3	-67.6	-57.6	-63.0	-22.3	-19.5	-40.8	-49.7	-32.5	-39.3
P10,000-P29,999	-35.9	-36.2	-36.3	-51.7	-38.5	-74.0	-77.1	-61.8	-45.7	-67.3	-54.3	-69.4	-49.5	-56.0	-24.1	-7.9	-34.1	-39.1	-25.6	-25.7
P30,000 and over	-19.7	-23.7	-21.0	-29.9	-28.3	-67.7	-74.1	-63.7	-44.9	-59.7	-51.3	-61.4	-51.6	-57.0	-13.9	-2.6	-27.3	-38.9	-17.7	-14.6
Family Financial Situation	-20.5	-25.2	-23.0	-32.5	-23.5	-38.0	-43.2	-26.8	-13.8	-26.0	-25.9	-27.3	-16.2	-17.1	-13.3	-13.2	-19.9	-19.3	-13.8	-15.0
Less than P10,000	-29.6	-33.4	-31.9	-48.4	-35.3	-51.7	-59.8	-43.9	-33.0	-39.5	-40.1	-45.1	-38.6	-40.3	-31.2	-31.7	-36.9	-40.6	-32.4	-39.3
P10,000-P29,999	-10.4	-20.7	-18.4	-19.9	-15.4	-31.9	-32.9	-18.4	-3.9	-17.8	-17.2	-19.0	-8.3	-8.0	-4.3	-7.3	-13.5	-9.8	-7.6	-2.8
P30,000 and over	-5.3	3.1	12.8	7.4	9.7	-2.4	-8.1	11.7	16.7	2.4	5.4	9.8	28.1	21.8	23.3	27.6	13.1	19.5	23.2	21.0
Family Income	-7.7	-8.7	-9.6	-14.7	-9.2	-12.5	-17.9	-7.5	-3.9	-12.5	-9.9	-13.8	-7.4	-6.3	-4.7	-4.6	-9.8	-10.7	-5.0	-7.2
Less than P10,000	-17.5	-20.2	-16.4	-30.0	-17.9	-24.1	-30.7	-18.8	-15.0	-25.1	-20.6	-27.6	-23.9	-24.5	-15.6	-22.2	-25.5	-20.3	-27.6	-27.6
P10,000-P29,999	1.3	-0.3	-5.4	-2.2	-3.2	-6.9	-8.6	0.8	3.7	-3.9	-3.8	-6.6	-0.8	1.9	0.6	-1.6	-4.5	-4.2	1.2	3.7
P30,000 and over	16.8	19.7	14.2	21.2	15.1	16.7	5.0	10.8	6.2	10.3	15.8	12.7	22.5	20.4	25.8	21.8	12.2	16.9	22.1	20.8



Consumer Expectations Survey
Philippines
Q1 2007 - Q4 2011

	2007				2008				2009				2010				2011			
	Q1	Q2	Q3	Q4	Q1	Q2	Q3	Q4	Q1	Q2	Q3	Q4	Q1	Q2	Q3	Q4	Q1	Q2	Q3	Q4
2. Consumer outlook indices on the current economic and family condition: Current Quarter (Continued)																				
AONCR																				
Economic Condition	-48.6	-40.5	-35.8	-55.6	-55.6	-72.6	-81.6	-70.9	-44.2	-55.5	-54.1	-62.9	-50.3	-52.7	-19.2	-6.0	-36.9	-41.6	-26.2	-24.7
Less than ₱10,000	-50.0	-43.2	-36.3	-57.7	-57.9	-71.1	-81.1	-70.9	-45.2	-55.0	-56.2	-63.7	-53.0	-51.1	-23.4	-9.8	-39.4	-44.0	-30.9	-27.5
₱10,000-₱29,999	-44.1	-33.0	-35.8	-52.5	-50.6	-75.6	-82.1	-72.0	-42.3	-56.1	-50.0	-62.8	-46.0	-56.1	-8.6	1.2	-30.8	-37.2	-20.8	-20.8
₱30,000 and over	-33.0	-23.3	-24.3	-39.4	-53.4	-76.3	-86.3	-65.7	-42.2	-59.2	-48.8	-54.1	-35.1	-53.7	-14.6	10.0	-35.7	-34.6	1.4	-11.2
Family Financial Situation	-35.0	-25.7	-25.6	-28.4	-28.6	-41.0	-52.8	-36.4	-24.3	-32.5	-29.0	-29.9	-22.1	-24.2	-18.6	-16.9	-24.3	-22.9	-23.8	-25.4
Less than ₱10,000	-39.8	-31.5	-33.1	-38.7	-36.3	-49.4	-61.1	-46.0	-34.0	-42.3	-41.2	-39.7	-31.6	-34.0	-27.5	-27.4	-34.7	-33.0	-38.0	-36.9
₱10,000-₱29,999	-18.9	-9.8	-7.9	-9.4	-13.6	-27.0	-38.2	-20.7	-5.1	-15.5	-7.3	-15.2	-4.1	-9.5	-2.3	1.4	-5.8	-7.2	-1.0	-8.2
₱30,000 and over	1.6	11.7	9.1	7.6	-6.6	-1.7	-20.9	-0.9	4.0	4.1	18.1	12.6	19.1	8.7	25.5	33.4	15.5	19.2	30.5	26.0
Family Income	-21.9	-12.7	-9.6	-16.2	-15.5	-18.7	-27.0	-17.1	-10.7	-14.5	-13.2	-15.2	-11.4	-9.6	-4.4	-1.9	-8.6	-7.5	-7.8	-13.1
Less than ₱10,000	-27.5	-18.9	-15.3	-26.7	-23.9	-26.3	-35.0	-27.7	-19.8	-22.6	-23.3	-25.0	-19.7	-18.7	-11.2	-10.8	-17.4	-16.0	-17.7	-23.3
₱10,000-₱29,999	-2.1	3.9	2.8	2.5	0.7	-5.2	-13.7	0.7	7.6	-0.5	4.0	-0.3	3.8	6.6	8.5	13.7	8.2	5.5	8.5	2.1
₱30,000 and over	11.6	27.2	26.4	28.0	8.6	12.7	8.4	18.3	12.6	15.5	30.4	25.8	26.8	9.0	26.9	40.6	20.2	28.2	28.9	32.4
3. Consumer outlook indices on economic and family condition: Next Quarter																				
Philippines																				
Economic Condition	-25.2	-16.9	-7.4	-24.8	-19.4	-46.4	-47.2	-27.0	-21.2	-25.1	-18.0	-28.1	-12.4	-6.3	24.8	18.2	-17.7	-16.6	-3.8	-2.2
Less than ₱10,000	-26.3	-20.1	-8.7	-27.4	-20.5	-46.5	-47.1	-26.9	-20.4	-26.2	-19.7	-28.2	-14.4	-8.8	20.6	14.1	-18.6	-18.3	-7.8	-5.4
₱10,000-₱29,999	-22.8	-9.3	-5.0	-21.2	-18.8	-46.7	-48.1	-26.9	-22.5	-22.1	-15.2	-29.6	-9.3	-2.8	32.8	23.9	-17.8	-13.6	2.1	1.5
₱30,000 and over	-16.5	-6.7	-0.4	-7.9	-6.5	-44.1	-44.2	-28.8	-22.5	-26.7	-12.2	-20.6	-4.2	-1.5	34.5	36.7	-7.9	-13.6	7.5	11.3
Family Financial Situation	-9.0	-7.9	4.4	-0.9	-3.2	-28.6	-24.5	-8.2	-3.5	-12.0	-0.9	-6.5	-4.3	-4.6	7.3	6.2	-5.4	-9.3	0.9	0.9
Less than ₱10,000	-14.2	-12.0	0.7	-9.0	-6.8	-34.2	-30.7	-13.9	-8.4	-17.7	-7.2	-11.1	-10.2	-11.7	2.5	1.2	-9.9	-15.0	-5.3	-6.0
₱10,000-₱29,999	5.8	1.6	12.0	11.7	3.0	-21.3	-15.0	-0.4	5.0	-3.6	7.2	-0.8	5.6	4.3	15.7	13.6	0.0	-2.1	8.4	10.9
₱30,000 and over	14.4	7.3	16.6	32.8	5.3	-1.6	-3.2	11.4	7.0	6.7	28.7	11.7	13.2	16.5	21.5	25.1	14.8	11.4	24.1	22.6
Family Income	1.0	4.8	15.3	11.9	12.6	-5.6	-3.7	1.7	6.1	-2.5	7.7	3.0	2.4	5.6	13.8	11.2	4.6	2.4	7.6	9.6
Less than ₱10,000	-3.3	1.0	11.8	5.6	7.5	-9.2	-7.4	-1.3	3.7	-6.2	3.9	0.1	-0.5	0.4	11.0	8.6	2.4	-1.4	3.3	6.0
₱10,000-₱29,999	13.5	13.5	24.4	22.3	22.2	0.2	1.9	6.8	11.4	4.2	13.7	5.6	6.4	13.3	19.5	14.8	8.0	7.0	14.0	15.3
₱30,000 and over	19.7	20.7	13.6	32.8	17.5	5.7	10.0	7.7	5.3	4.4	21.2	17.8	15.0	16.2	17.8	21.2	11.8	17.6	18.5	19.0
NCR																				
Economic Condition	-24.6	-13.4	-8.4	-15.8	-9.3	-39.9	-43.9	-27.5	-26.9	-26.3	-17.8	-32.1	-12.3	-8.1	23.4	16.4	-18.7	-24.5	-5.9	-3.9
Less than ₱10,000	-29.0	-17.3	-11.9	-23.0	-9.4	-41.5	-49.4	-31.5	-26.1	-28.0	-20.9	-32.9	-17.1	-11.8	18.9	5.4	-17.7	-27.7	-9.9	-12.7
₱10,000-₱29,999	-22.0	-10.2	-5.6	-10.7	-9.6	-39.3	-38.8	-25.0	-29.3	-25.4	-14.6	-32.0	-11.1	-6.8	25.2	23.1	-19.4	-22.6	-4.8	0.7
₱30,000 and over	-6.9	-6.5	1.2	5.2	-5.7	-34.8	-39.5	-19.7	-20.3	-22.0	-15.8	-30.1	-1.5	-1.1	34.4	28.8	-19.4	-20.3	2.7	8.3
Family Financial Situation	-3.4	-3.0	1.4	-1.4	3.1	-21.4	-23.2	-11.5	-4.9	-10.3	-1.1	-9.5	-0.7	-0.9	13.2	6.4	-8.1	-9.4	0.9	1.6
Less than ₱10,000	-10.3	-6.5	-3.4	-11.0	-0.9	-29.7	-36.6	-20.8	-13.4	-17.7	-10.1	-19.2	-12.5	-10.7	3.6	-5.6	-17.0	-22.5	-10.6	-14.7
₱10,000-₱29,999	2.7	-0.5	2.9	5.7	5.8	-17.6	-12.4	-5.2	-0.5	-5.0	4.8	-2.8	3.7	3.7	19.0	12.9	-3.7	-3.1	4.7	10.8
₱30,000 and over	14.9	5.0	26.2	25.3	15.2	0.1	-2.2	5.9	8.9	2.6	17.9	3.8	22.0	13.1	28.6	22.9	5.6	13.3	24.0	22.6
Family Income	4.7	10.8	14.8	13.7	16.8	-1.0	-3.7	3.4	4.6	-0.9	7.0	-0.1	5.6	7.5	14.4	8.2	1.4	0.5	6.8	3.8
Less than ₱10,000	-0.7	7.4	13.3	5.0	13.3	-4.5	-12.1	0.1	1.0	-4.6	2.6	-4.1	1.2	2.6	8.5	2.0	-3.6	-6.6	2.0	-5.2
₱10,000-₱29,999	10.1	13.9	15.0	21.6	19.2	0.5	3.2	5.1	6.5	1.8	10.3	0.9	7.1	10.0	17.6	12.6	4.2	4.1	8.4	9.2
₱30,000 and over	16.0	15.7	24.5	29.8	25.9	8.5	9.1	11.7	10.4	5.1	14.9	11.0	14.4	13.7	25.6	13.0	7.8	12.0	16.4	13.8



Consumer Expectations Survey
Philippines
Q1 2007 - Q4 2011

	2007				2008				2009				2010				2011			
	Q1	Q2	Q3	Q4	Q1	Q2	Q3	Q4	Q1	Q2	Q3	Q4	Q1	Q2	Q3	Q4	Q1	Q2	Q3	Q4
3. Consumer outlook indices on economic and family condition: Next Quarter (Continued)																				
AONCR																				
Economic Condition	-25.4	-17.5	-7.2	-26.2	-21.0	-47.5	-47.8	-27.0	-20.2	-24.9	-18.0	-27.4	-12.4	-6.1	25.0	18.5	-17.5	-15.3	-3.5	-2.0
Less than ₱10,000	-25.9	-20.4	-8.3	-28.0	-21.8	-47.1	-46.8	-26.4	-19.8	-26.0	-19.6	-27.7	-14.2	-8.4	20.8	14.9	-18.6	-17.3	-7.6	-4.7
₱10,000-₱29,999	-23.2	-9.0	-4.8	-23.4	-20.9	-48.5	-50.2	-27.3	-20.7	-21.3	-15.3	-29.0	-8.8	-1.7	35.0	24.1	-17.3	-11.1	3.9	1.7
₱30,000 and over	-24.2	-6.8	-1.1	-14.5	-6.8	-47.8	-46.4	-31.8	-23.2	-28.1	-10.9	-17.1	-5.4	-1.6	34.5	40.3	-3.0	-11.5	9.2	12.4
Family Financial Situation	-10.0	-8.8	4.9	-0.8	-4.2	-29.7	-24.7	-7.7	-3.3	-12.3	-0.9	-6.0	-4.9	-5.2	6.3	6.2	-5.0	-9.3	0.9	0.8
Less than ₱10,000	-14.7	-12.6	1.2	-8.8	-7.4	-34.7	-30.0	-13.1	-7.9	-17.7	-6.8	-10.2	-10.0	-11.8	2.4	1.9	-9.2	-14.2	-4.7	-5.1
₱10,000-₱29,999	6.9	2.3	14.3	13.0	2.4	-22.2	-15.5	0.8	6.5	-3.2	7.7	-0.3	6.2	4.4	14.7	13.8	1.0	-1.9	9.4	10.9
₱30,000 and over	14.1	8.8	12.4	36.6	2.2	-2.3	-3.6	13.3	6.4	8.1	32.6	14.5	9.4	17.7	19.1	26.1	18.8	10.9	24.2	22.6
Family Income	0.3	3.7	15.4	11.6	11.9	-6.3	-3.7	1.4	6.3	-2.8	7.8	3.5	1.9	5.3	13.7	11.6	5.2	2.7	7.7	10.5
Less than ₱10,000	-3.7	0.3	11.6	5.7	6.9	-9.7	-6.8	-1.5	4.0	-6.3	4.0	0.6	-0.7	0.2	11.2	9.3	3.0	-0.9	3.4	7.1
₱10,000-₱29,999	14.7	13.3	26.8	22.5	22.9	0.2	1.7	7.2	12.8	4.8	14.4	6.8	6.2	14.2	20.1	15.4	9.0	7.8	15.5	17.0
₱30,000 and over	22.8	24.0	8.9	34.3	15.0	4.6	10.4	6.4	3.5	4.2	23.5	20.3	15.2	17.1	15.1	25.1	13.5	19.4	19.2	20.7
4. Consumer outlook indices on economic and family condition: Next 12 Months																				
Philippines																				
Economic Condition	-15.2	-7.1	-5.8	-15.9	-13.2	-44.3	-48.9	-31.0	-20.2	-27.6	-15.5	-16.1	1.1	7.4	51.9	35.4	-11.8	-6.8	7.8	8.8
Less than ₱10,000	-18.1	-10.8	-8.6	-20.5	-15.2	-44.7	-50.4	-31.3	-21.0	-29.8	-18.7	-18.4	-2.8	1.0	46.3	30.1	-14.4	-10.3	2.4	4.2
₱10,000-₱29,999	-8.0	1.4	0.8	-9.4	-10.7	-44.8	-46.8	-29.9	-18.6	-22.5	-10.7	-15.4	8.4	16.4	61.8	44.1	-10.2	-1.9	15.2	15.5
₱30,000 and over	5.7	7.3	-2.0	10.7	-0.7	-37.6	-41.5	-32.3	-19.2	-27.1	-4.2	3.4	9.3	22.5	68.8	51.3	6.8	4.1	24.9	21.7
Family Financial Situation	4.0	5.8	8.9	9.5	9.5	-19.6	-23.1	-7.6	1.8	-3.9	1.2	0.7	4.4	7.5	23.0	19.0	2.1	5.1	10.9	13.4
Less than ₱10,000	-2.0	1.4	4.3	2.9	4.1	-25.4	-30.1	-14.5	-3.9	-10.9	-6.6	-6.6	-2.7	0.0	16.8	12.0	-4.7	-1.6	3.4	5.4
₱10,000-₱29,999	20.6	15.0	18.7	19.8	18.5	-12.6	-12.5	2.8	11.3	8.1	13.2	10.3	14.8	17.6	33.9	30.5	11.0	14.7	20.1	25.7
₱30,000 and over	37.3	31.9	22.3	37.2	26.3	10.4	2.5	12.9	16.3	14.1	28.3	26.2	32.3	26.4	41.4	39.8	30.1	25.3	39.5	34.9
Family Income	13.6	18.7	20.7	23.0	23.6	3.2	0.3	6.6	11.5	8.5	11.6	12.9	9.9	15.2	25.2	23.4	13.3	14.9	16.3	21.7
Less than ₱10,000	7.9	14.0	16.8	16.2	18.5	-2.7	-5.0	1.4	7.3	3.6	7.1	7.8	4.3	10.0	20.6	18.9	8.1	10.7	11.8	17.3
₱10,000-₱29,999	29.0	29.7	28.7	34.4	32.5	13.8	7.1	14.4	19.7	18.4	19.0	20.9	18.8	22.9	34.2	30.6	22.1	21.1	22.0	29.1
₱30,000 and over	44.8	36.9	33.8	42.5	35.9	16.0	25.0	21.9	16.4	15.1	25.8	26.4	28.8	25.8	34.4	37.9	26.0	27.3	33.5	30.9
NCR																				
Economic Condition	-0.4	2.1	5.1	-7.9	-0.1	-41.3	-42.3	-32.0	-23.7	-29.7	-7.0	-6.2	9.8	18.2	67.1	47.0	-1.1	-6.0	10.5	12.1
Less than ₱10,000	-3.8	-2.1	2.8	-13.1	-3.5	-44.1	-48.2	-33.5	-25.4	-34.0	-8.6	-9.7	6.6	13.4	63.2	32.5	-4.5	-10.3	6.4	2.5
₱10,000-₱29,999	3.7	6.3	8.2	-4.3	3.0	-39.7	-36.6	-30.5	-22.8	-27.6	-5.9	-5.0	9.6	19.1	69.3	56.6	0.6	-4.0	11.6	16.4
₱30,000 and over	3.2	5.2	4.6	8.3	5.2	-36.0	-36.1	-30.9	-20.7	-18.5	-4.0	2.9	20.3	29.6	73.9	61.0	4.3	1.6	19.0	28.0
Family Financial Situation	14.5	13.9	13.2	8.8	19.3	-16.4	-14.8	-8.7	0.8	-3.3	7.7	8.7	17.6	21.6	41.9	29.2	9.3	9.1	14.7	16.8
Less than ₱10,000	9.0	8.0	9.8	0.1	13.1	-30.2	-28.6	-17.2	-4.3	-15.9	-2.7	-0.9	2.7	8.0	34.0	14.4	-0.5	-3.3	4.6	-0.7
₱10,000-₱29,999	19.9	16.9	15.3	15.8	25.2	-7.8	-5.2	-4.8	-0.7	7.3	14.7	14.3	24.6	27.9	46.0	38.5	14.0	13.6	18.6	26.5
₱30,000 and over	26.3	35.5	25.5	30.5	27.5	11.2	11.2	13.3	25.2	13.6	29.0	24.9	41.4	40.9	56.9	45.5	25.0	35.7	33.1	39.8
Family Income	22.9	26.0	21.9	25.9	29.7	7.4	0.9	12.4	16.2	9.5	14.5	15.9	23.8	28.9	39.3	29.0	19.9	16.2	18.2	20.4
Less than ₱10,000	17.3	19.3	20.0	16.8	22.9	-0.1	-9.3	7.0	13.1	2.2	10.9	8.4	15.0	22.0	35.2	21.1	13.6	7.8	14.0	12.5
₱10,000-₱29,999	29.5	30.8	23.2	33.9	35.4	11.7	8.0	14.3	17.4	16.0	16.1	22.0	29.1	31.7	41.0	32.6	23.3	19.5	18.5	23.6
₱30,000 and over	30.0	42.6	27.6	44.1	42.2	23.3	20.5	27.9	22.4	17.6	25.0	22.8	33.9	40.1	49.7	42.8	28.1	33.2	30.4	34.6



Consumer Expectations Survey
Philippines
Q1 2007 - Q4 2011

	2007				2008				2009				2010				2011			
	Q1	Q2	Q3	Q4	Q1	Q2	Q3	Q4	Q1	Q2	Q3	Q4	Q1	Q2	Q3	Q4	Q1	Q2	Q3	Q4
4. Consumer outlook indices on economic and family condition: Next 12 Months (Continued)																				
AONCR																				
Economic Condition	-17.9	-8.8	-7.5	-17.2	-15.2	-44.8	-49.9	-30.8	-19.6	-27.2	-16.9	-17.7	-0.3	5.6	49.4	33.5	-13.6	-7.0	7.4	8.2
Less than P10,000	-19.9	-11.8	-9.9	-21.5	-16.5	-44.8	-50.7	-31.0	-20.6	-29.3	-19.9	-19.4	-3.7	-0.3	44.5	29.8	-15.4	-10.3	2.0	4.4
P10,000-P29,999	-12.2	-0.3	-1.2	-10.4	-13.8	-46.1	-49.0	-29.8	-17.4	-21.3	-11.9	-17.9	8.0	15.8	59.6	40.7	-13.1	-1.3	16.2	15.3
P30,000 and over	7.8	8.7	-4.9	11.9	-2.5	-38.3	-44.0	-32.8	-18.7	-29.9	-4.3	3.5	4.5	20.1	67.0	46.9	7.8	4.9	27.0	19.5
Family Financial Situation	2.1	4.4	8.2	9.6	8.0	-20.2	-24.4	-7.4	2.0	-3.9	0.1	-0.6	2.3	5.2	19.9	17.4	0.9	4.4	10.3	12.8
Less than P10,000	-3.4	0.7	3.7	3.3	3.1	-24.8	-30.3	-14.2	-3.9	-10.3	-7.1	-7.2	-3.2	-0.8	15.0	11.8	-5.1	-1.4	3.3	6.0
P10,000-P29,999	20.8	14.4	19.5	20.6	17.0	-13.8	-14.0	4.5	14.7	8.3	12.9	9.3	12.1	15.0	30.4	28.4	10.2	15.0	20.4	25.5
P30,000 and over	46.1	29.6	20.9	40.6	25.9	10.0	-1.6	12.7	13.2	14.3	28.1	26.8	28.4	21.3	35.8	37.2	32.3	21.9	41.9	33.2
Family Income	11.9	17.4	20.5	22.5	22.6	2.5	0.2	5.7	10.8	8.4	11.2	12.5	7.6	13.0	22.9	22.5	12.3	14.7	16.0	21.9
Less than P10,000	6.8	13.3	16.4	16.1	18.0	-3.0	-4.5	0.8	6.7	3.8	6.7	7.7	3.3	8.8	19.1	18.7	7.5	11.0	11.6	17.8
P10,000-P29,999	28.9	29.4	30.2	34.5	31.9	14.3	6.9	14.4	20.4	19.0	19.6	20.6	15.9	20.7	32.2	30.0	21.8	21.5	22.9	30.6
P30,000 and over	56.8	33.2	36.6	41.6	33.9	13.0	27.2	19.9	14.3	14.3	26.1	27.7	26.6	20.7	28.9	35.7	25.1	25.5	34.7	29.6
5. Confidence Index on Amount of Expenditures: Next Quarter																				
Philippines	34.2	33.4	35.1	41.3	36.8	57.9	56.9	44.9	40.7	44.4	43.4	41.8	44.6	42.6	34.9	41.5	47.1	48.4	43.1	47.7
Food	52.7	52.9	58.2	69.2	61.0	84.4	84.4	68.9	63.2	66.1	67.8	66.4	67.8	65.8	55.9	64.9	72.9	71.1	70.2	71.8
Clothing and Footwear	22.1	25.4	32.5	27.7	23.0	42.3	37.3	31.3	26.0	27.4	31.9	25.5	31.2	30.4	25.5	26.8	27.3	36.4	32.7	33.4
Fuel	36.3	37.5	37.0	39.8	33.9	65.9	69.2	43.1	39.7	49.2	50.8	46.2	53.2	50.9	35.7	46.1	54.3	57.1	47.5	53.4
Electricity	44.1	40.8	42.4	45.1	41.5	63.3	62.2	47.5	42.6	50.3	52.9	42.1	57.2	55.7	51.7	57.2	59.6	59.4	53.2	60.8
Water	23.3	17.4	16.1	19.2	19.4	33.2	32.8	25.3	23.1	27.6	27.4	21.9	32.6	34.4	22.1	27.9	30.8	34.5	23.4	32.5
House rent	5.4	1.0	1.0	2.2	1.7	18.4	15.8	11.7	10.9	12.9	8.9	11.1	12.9	9.4	5.4	7.8	8.9	10.8	4.9	10.7
Transportation	37.3	36.8	37.2	40.8	34.5	68.0	82.9	52.2	36.0	51.1	51.2	46.5	46.2	48.7	39.0	43.2	61.4	63.7	49.6	58.0
Communication	17.6	14.9	15.1	15.7	12.3	33.3	30.2	22.1	20.7	24.5	21.9	19.8	21.5	20.4	17.8	21.6	22.5	28.3	20.8	27.6
Education	35.5	47.2	36.4	44.4	44.9	60.1	45.9	41.6	40.8	45.7	38.2	34.6	41.8	41.2	27.9	37.4	42.0	50.8	36.8	42.7
Medical Care	37.3	36.4	34.8	38.9	38.0	59.2	52.5	44.7	40.6	42.7	40.8	33.6	39.6	32.9	25.7	36.8	40.5	45.6	34.8	46.6
Personal Care & Effects	37.6	37.2	35.0	45.9	42.6	59.8	59.4	47.1	44.4	45.4	39.0	39.7	41.4	38.7	30.2	41.3	48.1	51.5	41.8	50.7
Hotel & Restaurant	13.4	10.2	12.2	12.7	10.0	26.4	26.0	16.4	15.8	14.6	15.0	13.2	16.5	11.4	8.1	12.2	13.3	20.2	11.3	18.6
NCR	41.0	35.9	39.0	43.2	40.5	61.0	59.6	52.7	45.0	54.5	51.3	49.3	49.4	45.3	33.1	45.8	54.0	58.0	49.1	56.9
Food	59.8	57.2	64.8	70.6	62.7	86.2	87.5	78.1	67.6	80.4	78.7	77.2	76.5	70.7	54.0	68.8	81.1	84.2	76.9	83.1
Clothing and Footwear	21.2	27.9	31.5	26.9	26.5	39.7	35.4	33.4	23.1	28.5	31.7	23.2	26.0	18.8	20.7	17.3	29.6	34.3	34.1	36.3
Fuel	44.7	47.0	44.4	43.4	55.2	75.2	77.9	61.7	58.1	68.3	64.5	64.7	66.3	64.0	39.3	61.7	77.9	80.7	67.0	77.7
Electricity	62.3	58.7	56.2	46.8	56.8	73.4	69.0	68.3	62.1	73.4	68.3	64.5	76.2	75.2	64.6	75.4	76.2	84.6	69.4	75.2
Water	52.3	40.6	35.6	37.5	45.2	58.2	61.1	59.6	53.6	63.8	60.6	56.0	64.3	65.3	51.1	64.2	67.1	74.1	56.4	66.0
House rent	14.1	3.8	4.3	6.8	6.8	25.6	21.4	18.5	18.6	21.3	18.7	16.8	15.0	14.3	7.0	17.7	15.5	19.9	12.3	19.8
Transportation	33.5	27.4	38.0	47.0	40.5	71.8	83.6	59.9	35.9	59.2	53.4	49.9	52.1	41.0	29.4	46.3	70.7	76.3	53.6	68.8
Communication	23.4	14.8	16.8	14.7	16.8	33.8	34.3	26.1	19.0	28.5	26.1	26.2	20.8	13.4	10.6	17.3	25.7	28.1	23.0	30.7
Education	39.2	45.0	27.9	40.0	43.8	56.8	42.2	43.0	36.8	41.8	37.1	30.8	36.7	42.7	21.3	34.5	42.5	52.1	35.1	44.6
Medical Care	41.0	28.6	29.7	36.1	35.5	52.4	42.1	38.5	30.9	47.9	35.2	31.9	31.4	17.7	10.1	29.5	36.0	42.8	31.8	40.5
Personal Care & Effects	39.8	31.8	33.5	43.9	42.1	57.5	51.8	47.8	40.2	47.3	34.3	35.9	35.3	30.8	20.4	32.3	44.1	42.7	39.8	53.0
Hotel & Restaurant	23.1	16.6	30.6	22.0	21.4	39.9	30.9	22.6	23.6	17.3	16.0	10.6	17.7	2.6	3.5	14.6	17.2	21.4	16.7	20.0

A quarterly survey conducted by the
Department of Economic Statistics

Bangko Sentral ng Pilipinas
 Manila, Philippines
www.bsp.gov.ph



Consumer Expectations Survey
Philippines
Q1 2007 - Q4 2011

	2007				2008				2009				2010				2011			
	Q1	Q2	Q3	Q4	Q1	Q2	Q3	Q4	Q1	Q2	Q3	Q4	Q1	Q2	Q3	Q4	Q1	Q2	Q3	Q4
5. Confidence Index on Amount of Expenditures: Next Quarter (Continued)																				
AONCR	32.9	33.0	34.4	41.0	36.2	57.4	56.5	43.7	40.0	42.8	42.1	40.6	43.8	42.2	35.2	40.8	46.0	46.9	42.1	46.3
Food	51.4	52.2	57.1	69.0	60.7	84.1	83.9	67.3	62.5	63.8	66.0	64.6	66.4	65.0	56.2	64.3	71.6	69.0	69.1	69.9
Clothing and Footwear	22.3	25.0	32.6	27.8	22.4	42.7	37.6	31.0	26.5	27.2	31.9	25.9	32.1	32.3	26.2	28.4	27.0	36.7	32.5	33.0
Fuel	34.7	35.8	35.9	39.2	30.6	64.3	67.8	40.1	36.7	46.1	48.6	43.2	51.1	48.8	35.1	43.6	50.5	53.2	44.4	49.5
Electricity	40.7	37.5	40.2	44.9	39.1	61.7	61.1	44.2	39.4	46.5	50.4	38.4	54.2	52.5	49.6	54.3	56.9	55.3	50.6	58.5
Water	18.0	13.2	13.0	16.3	15.4	29.1	28.2	19.8	18.1	21.8	22.0	16.3	27.5	29.4	17.5	22.0	24.9	28.1	18.0	27.1
House rent	3.9	0.5	0.5	1.4	1.0	17.3	14.9	10.6	9.6	11.5	7.4	10.1	12.6	8.6	5.1	6.2	7.9	9.4	3.7	9.2
Transportation	38.0	38.4	37.1	39.8	33.6	67.3	82.8	51.0	36.0	49.8	50.9	46.0	45.3	49.9	40.5	42.7	59.9	61.7	48.9	56.2
Communication	16.6	14.9	14.9	15.8	11.6	33.2	29.5	21.5	20.9	23.8	21.2	18.7	21.6	21.6	19.0	22.3	22.0	28.3	20.4	27.1
Education	34.8	47.6	37.8	45.1	45.0	60.6	46.6	41.4	41.4	46.3	38.3	35.2	42.6	40.9	28.9	37.9	42.0	50.6	37.1	42.4
Medical Care	36.6	38.1	35.6	39.4	38.3	60.2	54.2	45.7	42.2	43.4	41.7	33.9	40.9	35.3	28.2	38.0	41.2	46.0	35.2	47.6
Personal Care & Effects	37.1	38.1	35.2	46.2	42.7	60.2	60.6	47.0	45.1	45.0	39.8	40.4	42.4	40.0	31.8	42.8	48.7	52.9	42.1	50.3
Hotel & Restaurant	11.7	9.1	9.2	11.3	8.2	24.2	25.2	15.4	14.5	14.2	14.9	13.7	16.3	12.8	8.9	11.8	12.7	20.0	10.4	18.3
6. Percentage of households who consider the current quarter good time to buy																				
Philippines	16.2	19.9	21.0	23.1	20.4	14.7	11.4	15.0	17.5	15.8	18.0	15.5	17.2	17.6	21.0	20.6	17.1	19.5	17.4	21.8
Consumer Durables	12.9	18.6	19.8	24.3	18.8	13.4	11.2	14.0	16.5	14.7	16.6	15.0	17.1	17.9	21.2	22.3	18.3	18.9	17.6	22.3
Motor Vehicle	14.6	14.7	15.9	16.4	13.9	9.5	6.1	9.1	11.3	11.5	12.7	10.4	11.3	10.9	12.9	13.9	10.6	11.2	11.5	13.6
House & Lot	20.9	26.5	27.3	28.5	28.4	21.2	16.9	22.0	24.8	21.1	24.7	21.1	23.3	24.1	28.9	25.5	22.4	28.3	23.0	29.6
NCR	17.3	19.4	22.9	18.2	18.5	18.6	15.5	17.3	16.4	19.1	20.6	14.7	19.0	22.6	24.9	20.0	16.8	17.0	20.3	21.4
Consumer Durables	12.4	17.5	24.3	19.9	17.0	18.6	17.1	19.0	17.1	17.5	23.8	16.6	23.5	23.9	26.7	22.6	19.4	18.8	21.9	25.4
Motor Vehicle	17.5	13.3	15.2	11.5	10.9	10.4	5.1	8.0	9.5	12.2	11.1	8.7	10.1	15.0	16.7	13.7	7.9	8.1	11.8	11.7
House & Lot	22.0	27.4	29.0	23.1	27.4	26.8	24.4	24.8	22.6	27.4	27.0	18.6	23.4	28.9	31.3	23.7	23.1	24.0	27.1	27.0
AONCR	16.0	20.0	20.7	23.9	20.7	14.1	10.8	14.6	17.7	15.2	17.6	15.7	17.0	16.8	20.4	20.7	17.2	19.9	16.9	21.9
Consumer Durables	13.0	18.8	19.1	25.0	19.1	12.6	10.3	13.1	16.4	14.3	15.5	14.8	16.1	17.0	20.3	22.3	18.2	18.9	16.9	21.8
Motor Vehicle	14.1	14.9	16.0	17.2	14.3	9.3	6.3	9.3	11.6	11.4	12.9	10.7	11.5	10.2	12.3	13.9	11.0	11.7	11.5	13.9
House & Lot	20.7	26.3	27.0	29.4	28.6	20.3	15.7	21.5	25.2	20.0	24.4	21.5	23.3	23.3	28.5	25.8	22.3	29.0	22.3	30.0
7. Percentage of households who intend to buy in the next 12 months																				
Philippines	9.3	12.1	13.6	15.3	13.0	7.9	6.0	7.0	7.5	7.5	9.5	7.4	7.3	6.8	7.9	8.7	7.0	9.1	8.8	10.0
Consumer Durables	14.2	20.5	21.7	26.4	20.3	10.6	8.3	9.5	9.7	9.8	12.7	11.0	10.8	9.7	11.0	12.4	11.3	13.1	11.5	14.4
Motor Vehicle	5.9	6.3	8.1	8.3	7.6	5.3	3.7	3.9	4.6	5.3	5.6	4.8	4.5	4.3	4.5	5.6	3.8	5.7	6.6	5.4
House & Lot	7.7	9.5	11.1	11.2	11.2	8.0	5.9	7.6	8.3	7.4	10.3	6.3	6.6	6.5	8.3	7.9	6.1	8.4	8.2	10.1
NCR	9.1	13.2	19.4	15.4	15.8	8.8	7.6	5.6	5.7	6.9	9.3	5.0	6.3	6.6	7.0	6.8	5.6	5.6	8.0	7.6
Consumer Durables	13.7	23.0	32.1	26.4	24.7	12.4	11.6	8.7	8.2	9.7	13.9	8.3	11.8	10.6	10.9	11.2	9.3	7.9	10.4	12.4
Motor Vehicle	6.0	6.1	10.1	8.2	7.5	4.1	3.7	2.3	2.9	3.4	4.1	1.9	2.0	3.8	3.3	3.7	2.5	2.7	4.0	3.5
House & Lot	7.8	10.5	16.0	11.5	15.2	9.7	7.6	5.6	5.9	7.6	9.8	4.9	5.0	5.5	6.8	5.6	5.0	6.3	9.4	6.8
AONCR	9.3	11.9	12.7	15.3	12.6	7.8	5.7	7.2	7.8	7.6	9.6	7.7	7.5	6.9	8.1	8.9	7.3	9.6	8.9	10.4
Consumer Durables	14.2	20.1	20.0	26.4	19.6	10.2	7.8	9.6	9.9	9.8	12.5	11.5	10.7	9.6	11.0	12.6	11.6	14.0	11.7	14.8
Motor Vehicle	5.9	6.4	7.7	8.4	7.6	5.4	3.7	4.1	4.9	5.6	5.8	5.3	5.0	4.4	4.7	5.9	4.1	6.2	7.0	5.7
House & Lot	7.7	9.3	10.3	11.1	10.6	7.7	5.6	8.0	8.7	7.4	10.4	6.5	6.8	6.7	8.5	8.3	6.2	8.7	7.9	10.6



Consumer Expectations Survey

Philippines

Q1 2007 - Q4 2011

	2007				2008				2009				2010				2011			
	Q1	Q2	Q3	Q4	Q1	Q2	Q3	Q4	Q1	Q2	Q3	Q4	Q1	Q2	Q3	Q4	Q1	Q2	Q3	Q4
8. Indices on Selected Economic Indicators: Next 12 Months																				
Philippines																				
Unemployment Rate Index	69.1	60.0	57.6	61.3	64.5	73.0	76.1	71.1	72.4	73.6	65.1	64.4	55.8	52.4	7.9	25.4	67.3	67.0	56.1	52.0
Interest Rate Index for Borrowing Money	63.0	55.5	53.6	55.8	48.4	57.0	58.2	46.0	45.4	46.7	46.5	41.3	46.0	39.6	26.4	33.6	43.2	42.2	42.3	39.5
Exchange Rate Index	-11.4	1.1	19.4	3.4	20.2	0.0	-29.7	-19.8	-10.8	-21.8	-13.2	-4.5	-11.0	-2.7	3.5	12.4	-3.0	-5.7	-0.6	0.5
Change in Prices Index	68.7	67.1	66.9	70.1	66.5	59.3	59.5	47.2	46.2	49.3	49.5	48.5	54.3	49.4	33.0	43.1	55.9	56.9	48.7	53.3
Inflation Rate	5.9	6.0	5.9	7.4	9.5	12.2	12.4	8.8	8.6	8.7	8.6	8.7	10.4	9.1	5.7	7.6	9.8	10.4	8.5	9.6
NCR																				
Unemployment Rate Index	63.9	50.4	49.7	56.2	46.9	76.5	78.4	69.5	72.1	72.8	58.7	56.7	47.8	49.8	-12.5	8.6	64.1	67.4	51.5	46.5
Interest Rate Index for Borrowing Money	63.8	50.7	54.4	50.4	39.5	46.9	51.9	41.2	43.6	43.1	45.4	38.8	41.5	35.4	15.1	25.0	34.3	45.8	36.9	39.5
Exchange Rate Index	-6.9	7.6	31.2	14.5	23.2	-0.5	-28.5	-18.8	-8.2	-22.7	-4.5	-7.6	-11.7	2.4	10.8	26.1	4.2	-1.0	5.3	9.6
Change in Prices Index	69.5	60.6	59.0	63.6	65.0	61.6	61.1	52.2	53.4	56.2	54.6	56.1	55.6	53.3	31.6	43.1	58.6	59.2	55.2	59.5
Inflation Rate	4.6	4.7	4.3	6.2	7.9	13.5	14.1	9.7	8.5	10.3	10.3	9.6	8.1	8.3	4.4	6.3	9.1	9.8	8.9	9.6
AONCR																				
Unemployment Rate Index	70.1	61.7	58.8	62.1	67.2	72.4	75.8	71.3	72.5	73.7	66.1	65.7	57.1	52.8	11.2	28.2	67.8	66.9	56.9	52.9
Interest Rate Index for Borrowing Money	62.9	56.4	53.5	56.7	49.8	58.7	59.2	46.8	45.7	47.3	46.6	41.7	46.7	40.3	28.3	35.0	44.6	41.6	43.1	39.5
Exchange Rate Index	-12.2	-0.1	17.6	1.6	19.7	0.1	-41.1	-27.8	-15.4	-21.6	-14.9	-4.0	-10.8	-3.7	2.1	9.9	-4.4	-6.6	-1.7	-1.3
Change in Prices Index	68.6	68.2	68.1	71.1	70.3	58.9	59.3	46.3	45.0	48.2	48.7	47.3	54.1	48.8	33.3	43.2	55.5	56.5	47.6	52.3
Inflation Rate	6.1	6.2	6.2	7.5	9.7	11.9	12.1	8.6	8.6	8.4	8.3	8.5	10.8	9.2	5.9	7.8	9.9	10.5	8.4	9.6
9. Percentage of OFW Households by Type of Use of OFW Remittances																				
Philippines																				
Food	92.1	91.8	94.1	97.3	96.2	95.7	95.6	95.8	94.7	96.2	93.4	95.2	97.0	96.3	96.0	96.7	98.0	97.2	96.7	95.0
Education	2.3	53.1	53.9	61.2	62.4	62.3	68.2	68.2	69.8	68.2	71.8	65.8	69.5	64.2	71.7	72.6	70.5	69.4	68.7	70.0
Medical expenses	0.7	24.2	24.5	29.3	38.5	51.2	44.4	57.6	55.2	62.4	63.2	62.2	56.7	51.4	61.6	61.1	62.0	59.6	55.7	60.9
Debt payments	-	22.9	30.2	34.0	31.1	39.2	36.0	48.9	48.5	51.1	50.0	49.2	48.5	43.3	50.3	49.8	48.4	46.4	45.6	45.8
Savings	7.2	15.7	19.8	17.5	14.0	31.3	30.4	35.8	40.0	38.3	39.9	44.8	50.4	38.0	43.0	43.7	41.4	44.0	35.5	42.6
Purchase of Appliances/Consumer Durables	5.2	9.0	10.3	7.5	6.5	20.3	18.0	24.6	24.7	25.9	26.5	26.0	30.0	27.0	31.0	28.9	29.1	33.9	26.9	27.4
Purchase of House*	2.7	2.5	1.5	1.1	6.1	14.3	12.4	16.1	11.2	10.8	12.1	10.5	15.0	11.9	15.5	11.3	12.3	15.2	9.3	11.4
Investment	2.3	4.5	4.1	5.9	1.8	3.0	7.4	4.7	5.9	8.3	7.6	7.1	5.8	7.2	7.0	5.8	5.7	6.8	9.1	6.4
Purchase of Car / motor vehicle	1.6	3.5	1.5	1.4	1.6	5.1	4.4	6.4	5.5	7.0	6.8	6.7	6.6	7.7	11.3	7.7	5.0	10.5	5.7	8.3
Others	0.7	2.2	2.1	0.7	0.7	6.2	8.4	6.3	4.5	6.1	6.6	6.5	4.5	5.0	7.1	2.6	2.3	2.4	3.1	5.5
NCR																				
Food and other household needs	92.5	91.1	93.4	96.9	94.6	95.9	94.4	97.3	95.5	96.9	94.1	95.9	97.5	96.7	96.2	97.4	98.1	98.2	96.8	96.0
Education	1.9	55.1	51.4	62.0	61.7	67.1	69.1	72.8	72.3	64.1	73.0	69.0	75.5	65.0	71.1	70.7	71.8	70.0	73.1	71.3
Medical expenses	0.4	20.0	21.7	30.6	38.8	45.5	43.2	58.1	58.3	57.6	65.2	60.9	60.5	45.4	60.2	57.6	67.5	64.3	53.6	56.7
Debt payments	-	25.3	34.0	34.9	30.0	30.5	30.9	47.7	45.5	44.1	47.3	43.5	50.6	39.2	50.4	51.4	51.9	49.5	45.0	38.9
Savings	4.9	15.1	16.5	14.0	10.8	32.5	30.9	38.6	44.2	38.6	44.1	52.8	62.1	43.1	50.4	45.3	48.7	53.4	39.3	49.1
Purchase of Appliances/Consumer Durables	4.1	6.7	7.1	7.9	5.8	19.1	22.5	29.5	28.9	28.3	32.4	29.9	36.0	28.8	36.6	30.9	33.8	41.0	27.2	37.5
Purchase of House*	2.6	1.8	1.9	1.3	8.8	19.1	16.1	19.1	12.4	13.4	18.8	11.8	19.7	13.7	18.0	13.5	13.6	20.1	11.5	16.4
Investment	1.1	3.1	2.4	5.2	1.3	2.0	8.8	4.0	7.9	10.0	8.6	5.5	4.1	8.5	8.8	2.6	6.2	5.3	11.5	6.9
Purchase of Car / motor vehicle	0.8	4.0	0.9	1.3	2.5	4.1	4.9	7.4	6.6	8.3	9.0	7.7	6.7	6.5	13.3	8.0	5.8	11.0	4.6	9.5
Others	0.4	0.9	1.4	0.4	1.3	6.5	6.3	6.4	2.1	4.5	5.5	5.2	1.9	2.0	7.1	2.9	1.0	0.4	2.9	6.2

* From Q2-Q4 2008, purchase of house included rentals

A quarterly survey conducted by the
Department of Economic Statistics

Bangko Sentral ng Pilipinas
Manila, Philippines
www.bsp.gov.ph



Consumer Expectations Survey
Philippines
Q1 2007 - Q4 2011

	2007				2008				2009				2010				2011			
	Q1	Q2	Q3	Q4	Q1	Q2	Q3	Q4	Q1	Q2	Q3	Q4	Q1	Q2	Q3	Q4	Q1	Q2	Q3	Q4

9. Percentage of OFW Households by Type of Use of OFW Remittances (Continued)

	2007	2008	2009	2010	2011
AONCR					
Food and other household needs	91.6	92.6	94.9	97.6	98.0
Education	2.8	50.6	56.8	60.4	63.2
Medical expenses	1.1	29.5	27.8	27.8	38.2
Debt payments	-	19.9	25.6	33.0	32.4
Savings	10.7	16.5	23.9	21.2	17.6
Purchase of Appliances/Consumer Durables	6.7	11.9	14.2	7.1	7.4
Purchase of House*	2.8	3.4	1.1	0.9	2.9
Investment	3.9	6.3	6.3	6.6	2.5
Purchase of Car / motor vehicle	2.8	2.8	2.3	1.4	0.5
Others	1.1	4.0	2.8	0.9	0.0

10. Distribution of Households with OFW

	2007	2008	2009	2010	2011
Philippines					
Number of Respondent Households with OFW	444	423	419	469	477
Percentage Over Total Sample Respondents	8.5	8.2	8.6	9.4	9.6
Number of Households that Received Remittances	425	401	388	441	444
Percentage Over Total Households with OFW	95.7	94.8	92.6	94.0	93.1
NCR					
Number of Respondent Households with OFW	266	237	231	248	262
Percentage Over Total Sample Respondents	9.9	9.2	9.7	10.1	10.7
Number of Households that Received Remittances	253	225	212	229	240
Percentage Over Total Households with OFW	95.1	94.9	91.8	92.3	91.6
AONCR					
Number of Respondent Households with OFW	178	186	188	221	215
Percentage Over Total Sample Respondents	6.9	7.3	7.5	8.8	8.6
Number of Households that Received Remittances	172	176	176	212	204
Percentage Over Total Households with OFW	96.6	94.6	93.6	95.9	94.9

* From Q2-Q4 2008, purchase of house included rentals



Consumer Expectations Survey
Philippines
Q1 2007 - Q4 2011

	2007				2008				2009				2010				2011			
	Q1	Q2	Q3	Q4	Q1	Q2	Q3	Q4	Q1	Q2	Q3	Q4	Q1	Q2	Q3	Q4	Q1	Q2	Q3	Q4
11. Percentage Distribution of Respondents by Income Group																				
Philippines																				
Less than P10,000	66.5	62.3	61.9	59.1	58.4	58.2	57.5	57.1	55.5	58.4	58.4	56.1	55.1	52.4	55.9	54.3	54.8	54.1	53.4	54.4
P10,000 – P29,999	28.6	32.9	33.0	35.9	36.5	34.0	33.6	33.8	36.1	32.6	33.4	34.4	34.9	36.6	36.5	36.9	35.8	36.3	36.6	35.8
P30,000 – and over	4.9	4.9	5.1	5.0	5.1	7.8	8.9	9.1	8.4	9.0	8.2	9.5	10.0	11.0	7.6	8.8	9.4	9.6	10.0	9.7
Total	100.0	100.0	100.0	100.0	100.0	100.0	100.0	100.0	100.0	100.0	100.0	100.0	100.0	100.0	100.0	100.0	100.0	100.0	100.0	100.0
NCR																				
Less than P10,000	54.5	49.6	51.4	51.3	49.4	47.4	49.4	47.6	42.0	47.9	48.9	45.4	42.7	41.2	44.0	41.6	41.4	42.3	41.2	41.7
P10,000 – P29,999	37.6	42.8	41.1	41.0	43.7	41.0	37.9	40.0	46.3	39.6	39.9	41.1	43.2	44.2	45.8	45.5	44.9	45.0	44.9	44.8
P30,000 – and over	7.9	7.6	7.6	7.6	6.9	11.6	12.8	12.4	11.7	12.5	11.3	13.5	14.1	14.6	10.2	12.9	13.7	12.7	13.9	13.6
Total	100.0	100.0	100.0	100.0	100.0	100.0	100.0	100.0	100.0	100.0	100.0	100.0	100.0	100.0	100.0	100.0	100.0	100.0	100.0	100.0
AONCR																				
Less than P10,000	79.0	75.1	71.9	66.6	67.2	67.9	67.2	67.3	68.7	68.6	68.1	67.3	70.0	65.4	69.4	67.8	68.3	66.8	67.1	66.9
P10,000 – P29,999	19.2	22.8	25.4	31.0	29.4	27.7	28.5	27.1	26.1	25.8	26.8	27.4	24.9	27.8	25.9	27.8	26.5	27.1	27.3	27.1
P30,000 – and over	1.8	2.1	2.7	2.4	3.4	4.4	4.3	5.6	5.2	5.5	5.1	5.4	5.1	6.8	4.6	4.5	5.1	6.2	5.7	6.0
Total	100.0	100.0	100.0	100.0	100.0	100.0	100.0	100.0	100.0	100.0	100.0	100.0	100.0	100.0	100.0	100.0	100.0	100.0	100.0	100.0
12. Total Sample Households and Response Rate																				
Philippines																				
Number of Sample Households	5453	5251	5093	5087	5084	4839	5472	5448	5487	5909	5315	5496	5496	5706	5774	5833	6096	5889	5658	6028
Number of Respondents	5239	5130	4876	4969	4962	4597	5271	5264	5290	5680	5054	5250	5306	5479	5577	5643	5920	5700	5512	5879
Response Rate	96.1	97.7	95.7	97.7	97.6	95.0	96.3	96.6	96.4	96.1	95.1	95.5	96.5	96.0	96.6	96.7	97.1	96.8	97.4	97.5
NCR																				
Number of Sample Households	2879	2689	2558	2526	2522	2306	2990	2850	2724	2973	2717	2830	2999	3104	3101	3004	3064	3044	3001	2977
Number of Respondents	2677	2584	2381	2446	2456	2171	2858	2732	2613	2806	2544	2685	2889	2948	2973	2898	2982	2942	2913	2906
Response Rate	93.0	96.1	93.1	96.8	97.4	94.1	95.6	95.9	95.9	94.4	93.6	94.9	96.3	95.0	95.9	96.5	97.3	96.6	97.1	97.6
AONCR																				
Number of Sample Households	2574	2562	2535	2561	2562	2533	2482	2598	2763	2936	2598	2666	2497	2602	2673	2829	3032	2845	2657	3051
Number of Respondents	2562	2546	2495	2523	2506	2426	2413	2532	2677	2874	2510	2565	2417	2531	2604	2745	2938	2758	2599	2973
Response Rate	99.5	99.4	98.4	98.5	97.8	95.8	97.2	97.5	96.9	97.9	96.6	96.2	96.8	97.3	97.4	97.0	96.9	96.9	97.8	97.4

Note:

* From Q2-Q4 2008, purchase of house included rentals

