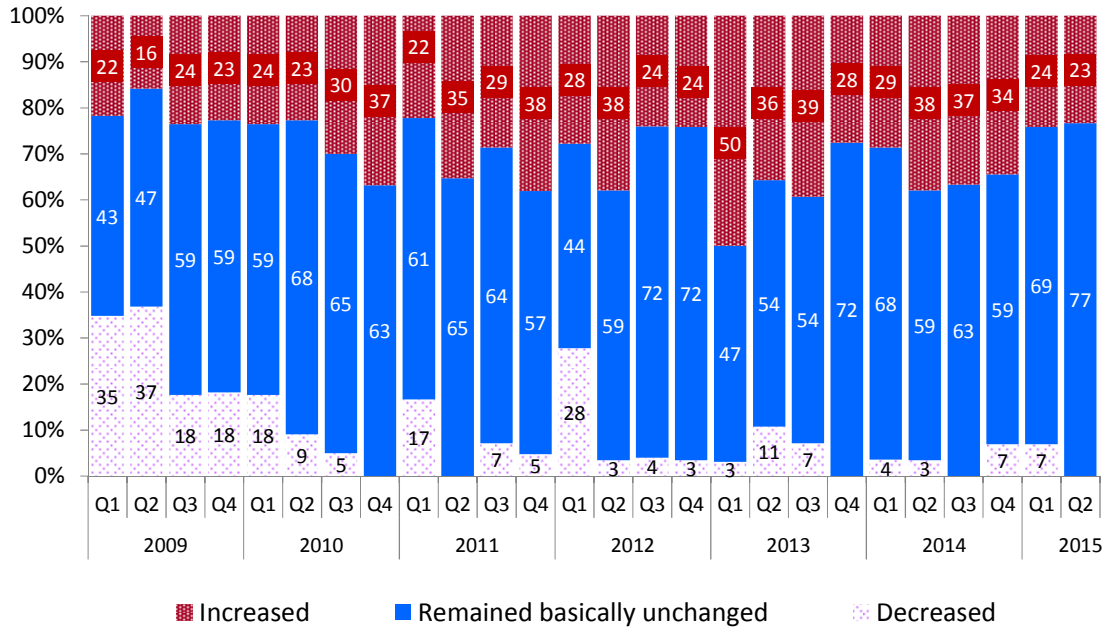


CHART 2. DISTRIBUTION OF RESPONSES TO CHANGES IN OVERALL DEMAND FOR LOANS TO ENTERPRISES AND HOUSEHOLDS

**Distribution of Banks' Responses to Changes in Demand
Loans to Enterprises (Overall)**



**Distribution of Banks' Responses to Changes in Demand
Household Loans (Overall)**

