



Philippine Economic Briefing (PEB) Domestic Roadshow

Department of Transportation

Cebu, Philippines
18 September 2025

More Railways and Smoother Land Acquisition with the 'ARROW' Act



Lower Free Subterranean Right-of-Way (ROW) Threshold

The lower ROW threshold of 18-meters (previously 50-meters) eases the development of future subterranean railways (only for IFPs), as anything below the threshold is free from any need to do expropriation.



Much Systematic Land Valuation upon the Acquisition of Lots/Properties

Land now much easier to negotiate, as prices shall be pursuant to the Real Property Valuation and Reform Assessment (RPVARA) Act, when values are already available.



Easier Payment Terms

The National Government will only have to pay 15% of the total market value of land at the start of expropriation (from 100%), aside from replacement costs and the value of crops and trees.



PPP Private Partners Authorized to do Land Acquisition

PPP Partners, governed by RA No. 11966, may now undertake expropriation on behalf of the government for infrastructure projects.



Accelerating the Delivery of Key Region VII Projects



Enhancing Tourism

Bohol-Panglao International Airport (BPIA)

- **30-Year Concession Agreement with Aboitiz InfraCapital (AIC) is already ongoing.**
- A Project Steering Committee (PSC), composed of the DOTr, CAAP, PPPC, and AIC, is established to monitor the progress of the project.

25%↑ By 2027
(From 2 to 2.5 mppa¹)

56%↑ After 2030
(From 2.5 to 3.9 mppa)



Expanding Trade

New Cebu International Container Port (NCICP)

- **Asset improvements are ongoing** as funded by the KoreaExim Bank.
- The O&M business case is also being developed with the support of the International Finance Corporation (IFC). **Bidding for the O&M contract by Q2 2026, with the Notice of Award (NOA) expected to be issued by October 2026.**

↑ **Cargo Capacity**
Facility upgraded to handle 14,400 TEUs² to further suit future demand

+5 **Quay Cranes**
More efficient movement of containerized goods in the facility



Enabling Mobility

Cebu Bus Rapid Transit (CBRT)

- Partial Operations to commence by September 2025, as spearheaded by the Cebu City Government.
- **Phase 1 near finalized with the support of the World Bank.**

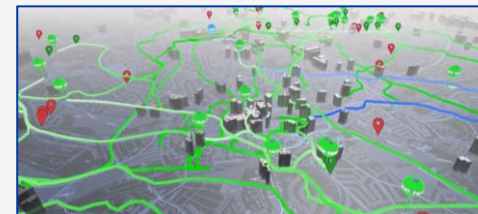
~146k
Commuters catered Day 1-onward of Full Operations³

Other Projects In the Pipeline



Cebu Urban Mass Rapid Transit Line

A feasibility study is planned to be conducted for a near ~67.5km subterranean railway that traverses Cebu, from Danao to Carcar, and vice versa.



Public Transport Pre-Investment Study for Metro Bohol

Involves the development of a transport model that assesses demand in the area, which will inform the prospects of the establishing of mass transport projects (e.g. BRTs, railways...).

Notes

1. Million passengers per annum (MPPA)
2. Twenty-foot Equivalent Units (TEUs)
3. Based on the 2023 NEDA Board Re-Approval



**In the DOTr, we redistribute.
We close the gaps to leave no one behind.**